

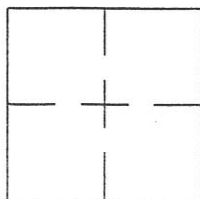
CORNER RECORD

Document Number 199

Section 13, T.22N.R.12E. M.D.M.

County of Plumas, California

Brief Legal Description Lot 14 Mohawk Vista Subdivision per 3 M 6



CORNER TYPE

Government Corner  Control   
Meander  Property   
Rancho  Other   
Date of Survey Sept. 20, 2001

COORDINATES (Optional)

N. \_\_\_\_\_  
E. \_\_\_\_\_  
Zone \_\_\_\_\_ Datum \_\_\_\_\_  
Elev. \_\_\_\_\_

Corner- Left as found  Found and tagged  Established  Reestablished  Rebuilt

Identification and type of corner found: Evidence used to identify or procedure used to establish or reestablish the corner:  
Found points as indicated as shown on Mohawk Vista Subdivision. From these  
points, set the missing corner. The point set by LS 6051 fits the map calls.

A description of the physical condition of the monument as found and as set or reset:  
The points were in good condition. The one that was reset fell on a lava cap  
and mound of stone was built around it.

SURVEYOR'S STATEMENT

This Corner Record was prepared by me or under my direction in conformance with the Land Surveyors' Act on Sept. 20, 2001.

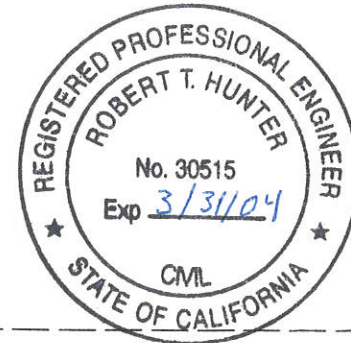
Signed John W. Hamby L.S. 2843  
John W. Hamby



COUNTY SURVEYOR'S STATEMENT

This Corner Record was received October 18, 2001 and examined and filed October 23, 2001.

Signed R. Tom Hunter Title County Surveyor



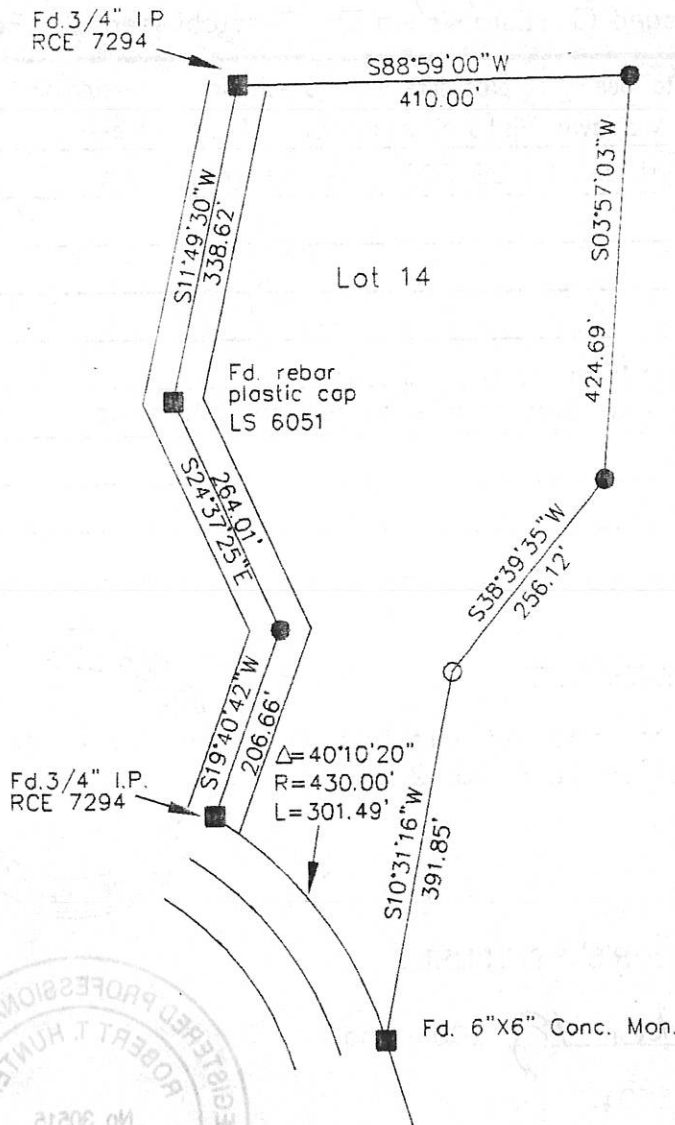
County Surveyor's Comment \_\_\_\_\_

991

- FOUND point as described
  - FOUND 3/4" Iron Pipe
  - SET 5/8" Rebar & Aluminum Cap LS 2843
- (R1) Bearings & Distances Record per 3 M. 6



Scale 1"=200'



Lot 14

Fd. rebar plastic cap LS 6051

Fd. 3/4" I.P. RCE 7294

Δ=40°10'20"  
R=430.00'  
L=301.49'

Fd. 6"X6" Conc. Mon.



LOT 14

MOHAWK VISTA SUBDIVISION

Hamby Surveying Inc.  
 P.O. Box 1209  
 Portola, CA 96122  
 (530) 832-5571

01168