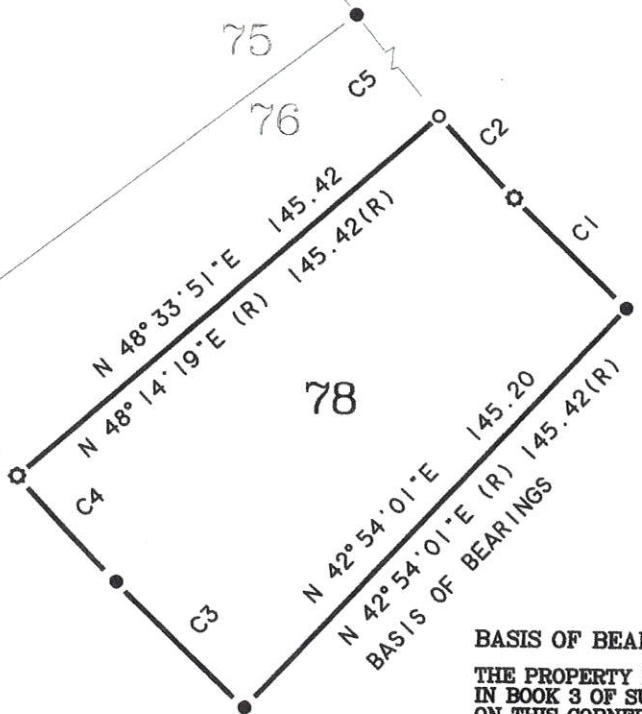


MEASURED

CURVE	DELTA ANGLE	RADIUS	ARC
C 1	02° 15' 57"	1040.00	41.13
C 2	03° 14' 29"	510.12	28.86
C 3	02° 16' 09"	1185.42	46.95
C 4	03° 16' 07"	655.54	37.39
C 5	15° 43' 12"	510.12	139.96

RECORD

CURVE	DELTA ANGLE	RADIUS	ARC
C 1	02° 15' 59"	1040.00	41.14
C 2	03° 14' 29"	510.12	28.86
C 3	02° 15' 59"	1185.42	46.89
C 4	03° 14' 29"	655.54	37.09
C 5	15° 43' 28"	510.12	140.00



DELLEKER DRIVE



SCALE 1 INCH = 50 FEET

BASIS OF BEARINGS

THE PROPERTY LINE COMMON TO LOTS 78 AND 79 SHOWN AS N 42-54-01 E IN BOOK 3 OF SUBDIVISION MAPS AT PAGE 9, IS THE BASIS OF BEARINGS SHOWN ON THIS CORNER RECORD.

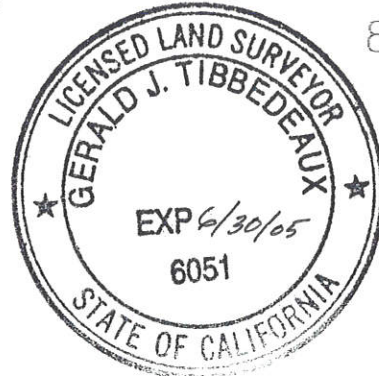
LEGEND

- FOUND 1/2" IRON PIPE & CAP R.C.E. 13219
- ⊙ FOUND 1/2" IRON PIPE SET TAG P.L.S. 6051
- SET LEAD & TAG P.L.S. 8051
- (R) RECORD INFORMATION PER BOOK 3 OF SUBDIVISION MAPS, PAGE 9

SURVEYOR'S STATEMENT

THIS CORNER RECORD WAS PREPARED BY ME OR UNDER MY DIRECTION IN CONFORMANCE WITH THE LAND SURVEYOR'S ACT ON AUGUST 29, 2001.

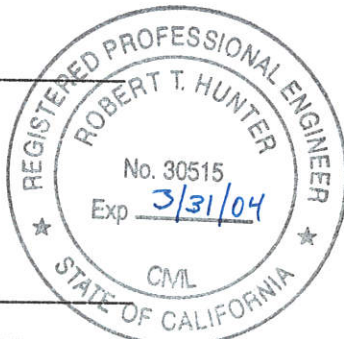
Gerald Joseph Tibbudeau
 GERALD JOSEPH TIBBEDEAUX
 P.L.S. 6051
 LICENSE EXPIRES 06/30/05



COUNTY SURVEYOR'S STATEMENT

THIS CORNER RECORD WAS RECEIVED 11/16/01 2001
 AND EXAMINED AND FILED 11/21/01 2001

R. Tom Hunter
 R. TOM HUNTER R.C.E. 30515
 COUNTY SURVEYOR
 LICENSE EXPIRES 03/31/04



CORNER RECORD FOR

JOHN C. DORN
 LOT 78 BOOK 3 OF SUBDIVISION MAPS PAGE 9
 WITHIN SECTION 34, T. 23N., R. 13E., M.D.M.
 DELLEKER PLUMAS COUNTY CALIFORNIA
 SCALE 1 INCH = 50 FEET AUGUST, 2001

Tibbudeau Surveying
 P.O. Box 1960 / 565 Ridge St
 Portola, CA 96122

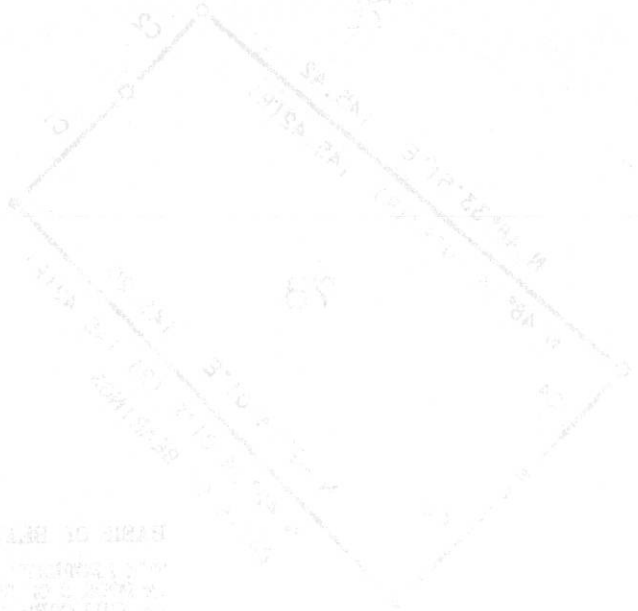
DOCUMENT # # 201

MEASURED	DELTA ANGLE	Bearing	ARC	CURVE DELTA ANGLE	RADIUS	ARC
C 1	03° 18' 27"	104° 00'	41.15	03° 18' 27"	1040.00	41.14
C 2	03° 18' 27"	210° 12'	38.00	03° 18' 27"	210.12	38.00
C 3	03° 18' 03"	183° 45'	40.02	03° 18' 03"	183.45	40.00
C 4	03° 18' 03"	055° 24'	37.35	03° 18' 03"	055.24	37.00
C 5	12° 43' 12"	210° 12'	130.00	12° 43' 12"	210.12	130.00



SCALE 1" = 100'

DELTA ECLIPSE DRIVE



THESE RECORDS WERE PREPARED BY ME IN ACCORDANCE WITH THE PROVISIONS OF THE SURVEYORS' STATE BOARD ACT AND THE PROVISIONS OF THE PROFESSIONAL ENGINEERS' ACT.

[Signature]
 GERALD J. TIBBODEAUX
 LICENSE NUMBER 6051

AND EXAMINED AND FILED
 11/21
 THIS CORNER RECORD WAS RECEIVED
 11/16

TOPographer
 P.O. Box 1000 / 605 Ridge St
 Fortina, CA 95122
 SCALE 1" = 100 FEET
 AUGUST 2001
 DELTECA PLUMAS COUNTY CALIFORNIA
 JOHN C. DORN
 FOR
 CORNER RECORD



[Signature]
 ROBERT HUNTER
 LICENSE NUMBER 41116

DOCUMENT # 301