

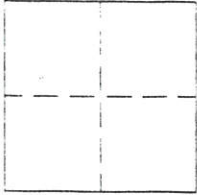
CORNER RECORD

Document Number 202

Section 36, T.23N.R.13E.

County of Plumas, California

Brief Legal Description Lots 11 & 12 Block 31 Northern Addition to Portola



CORNER TYPE

Government Corner Control
Meander Property
Rancho Other
Date of Survey October 10, 2001

COORDINATES
(Optional)

N. _____
E. _____
Zone _____ Datum _____
Elev. _____

Corner- Left as found Found and tagged Established Reestablished Rebuilt

Identification and type of corner found: Evidence used to identify or procedure used to establish or reestablish the corner:
The corners found were in good condition and as shown on the attached sketch and on 8 RS 8.
The Northeast corner of Lot 11 fell under a fence so a Witness Corner was set on line 1.00 feet
Westerly from the corner location.

A description of the physical condition of the monument as found and as set or reset: _____
The corners found were in good condition and as shown on the attached sketch. All set monuments
are as indicated on the attached sketch.

SURVEYOR'S STATEMENT

This Corner Record was prepared by me or under my direction in conformance with the Land Surveyors' Act on Dec. 15, 2001.

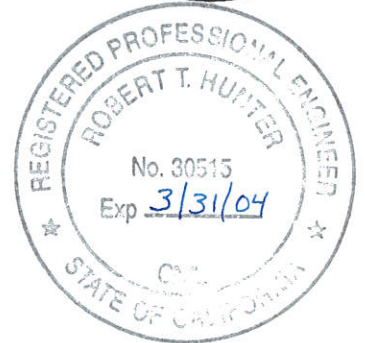
Signed John W. Hamby L.S. 2843
John W. Hamby



COUNTY SURVEYOR'S STATEMENT

This Corner Record was received January 24th 2002 and examined and filed January 28th 2002..

Signed R. Tom Hunter Title P.C. Engineer

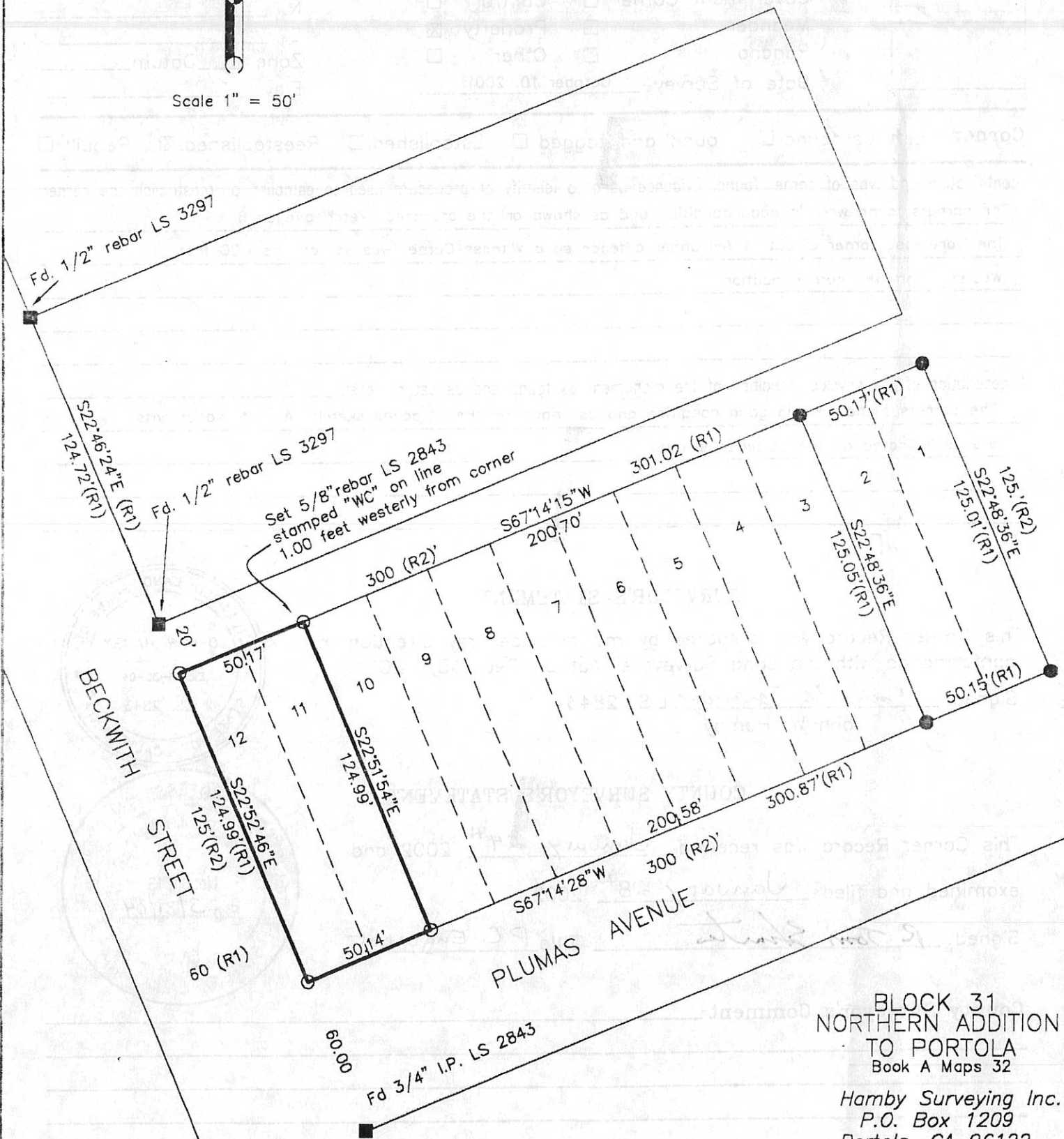


County Surveyor's Comment _____

- FOUND Rebar with Aluminum Cap LS 2843
- SET 5/8" Rebar & Aluminum Cap LS 2843
- FOUND point as described
- (R1) Record per 8 RS 8
- (R2) Record per Book A Maps page 32.



Scale 1" = 50'



BLOCK 31
NORTHERN ADDITION
TO PORTOLA
Book A Maps 32

Hamby Surveying Inc.
P.O. Box 1209
Portola, CA 96122
(530) 832-5571