

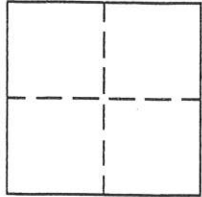
CORNER RECORD

Document Number 203

Section 36, T.23N.R.13E. M.D.M.

County of Plumas, California

Brief Legal Description Block 13 Eastern Addition to Portola Book A Page 27



CORNER TYPE

Government Corner Control
Meander Property
Rancho Other
Date of Survey Dec. 2001

COORDINATES (Optional)

N. _____
E. _____
Zone _____ Datum _____
Elev. _____

Corner— Left as found Found and tagged Established Reestablished Rebuilt

Identification and type of corner found: Evidence used to identify or procedure used to establish or reestablish the corner: Found and tied points shown on 8 R.S. 9, and used the proportioning shown on said map to set the corners shown on the attached sketch.

A description of the physical condition of the monument as found and as set or reset: The found corners were in good condition as shown on 8 RS 9, and the set corners were as shown on the attached sketch.

SURVEYOR'S STATEMENT

This Corner Record was prepared by me or under my direction in conformance with the Land Surveyors' Act on December 21, 2001.

Signed John W. Hamby L.S. 2843
John W. Hamby



COUNTY SURVEYOR'S STATEMENT

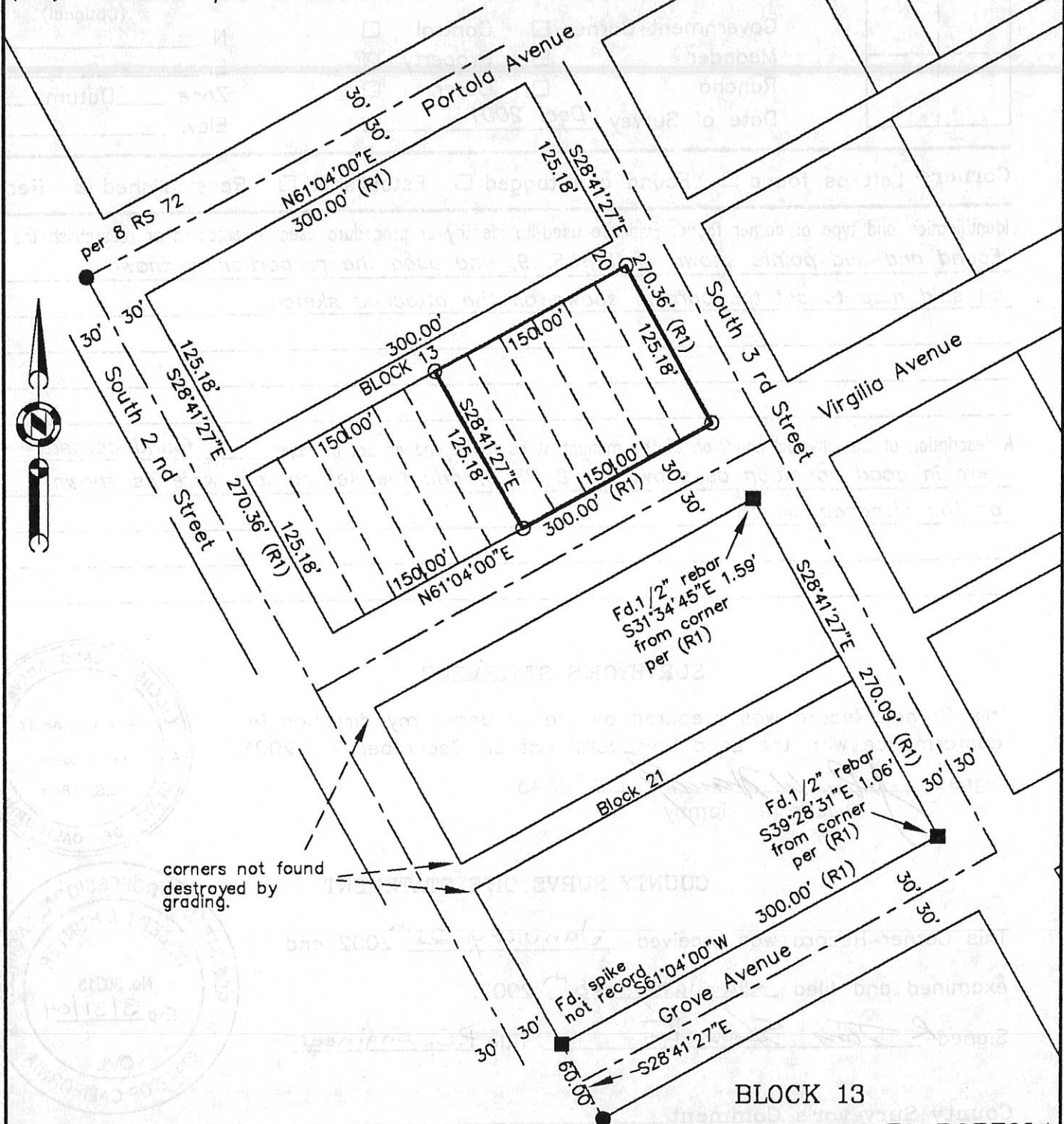
This Corner Record was received January 25th 2002 and examined and filed January 28th 2002.

Signed R. Tom Hunter Title P.C. Engineer



County Surveyor's Comment _____

- FOUND point as described
 - FOUND Rebar with Aluminum Cap LS 2843
 - SET 5/8" Rebar & Aluminum Cap LS 2843
- (R1) RECORD per 8 RS 9



BLOCK 13
EASTERN ADDITION TO PORTOLA

Book A Page 27

Portion of Section 36 T.23N.R.13E.
 M.D.M
 Portola Plumas County California
 scale 1" = 100' Dec. 2001

Hamby Surveying Inc.
 P.O. Box 1209
 Portola, CA 96122
 (530) 832-5571