

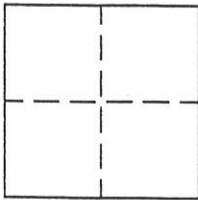
CORNER RECORD

Document Number 204

Section 36, T.23N. R.13E. M.D.M.

County of Plumas, California

Brief Legal Description Portion Block 53 Second North Addition to Portola Townsite



CORNER TYPE

Government Corner Control
Meander Property
Rancho Other
Date of Survey Jan 24, 2002

COORDINATES (Optional)

N. _____
E. _____
Zone _____ Datum _____
Elev. _____

Corner— Left as found Found and tagged Established Reestablished Rebuilt

Identification and type of corner found: Evidence used to identify or procedure used to establish or reestablish the corner:
Found points as shown and described on attached sketch and as shown on 9 PM 140.

A description of the physical condition of the monument as found and as set or reset:
Found points as described and in good condition. Points set as shown on attached sketch.

SURVEYOR'S STATEMENT

This Corner Record was prepared by me or under my direction in conformance with the Land Surveyors' Act on January 24, 2002.

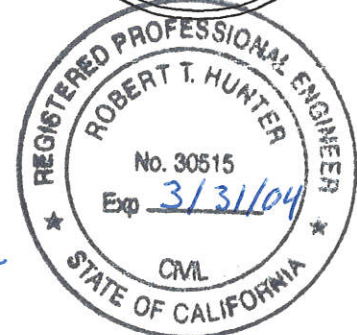
Signed John L. Owen L.S. 5620
John L. Owen



COUNTY SURVEYOR'S STATEMENT

This Corner Record was received February 11, 2002 and examined and filed February 15, 2002.

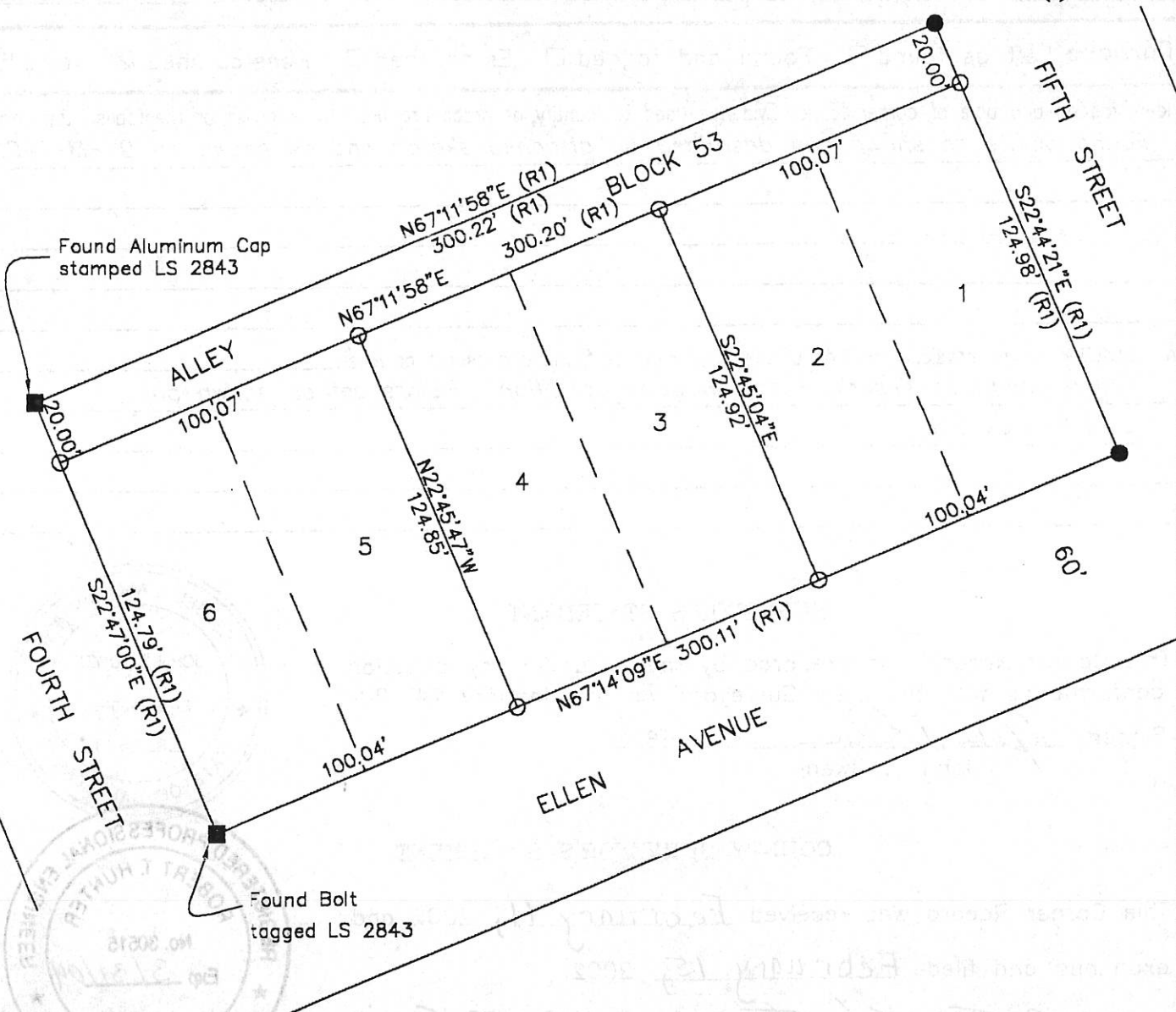
Signed R Tom Hunter Title County Engineer



County Surveyor's Comment _____

- FOUND Rebar with Plastic Cap LS 2843
- SET 5/8" Rebar & Aluminum Cap LS 5620.
- FOUND point as described

(R1) RECORD per 9 PM 140



**BLOCK 53
SECOND NORTH ADD.
TO PORTOLA TOWNSITE**

BOOK A PAGE 30
PORTOLA PLUMAS Co. CALIFORNIA
Scale 1" = 50" January, 2002

Hamby Surveying Inc.
P.O. Box 1209
Portola, CA 96122
(530) 832-5571