

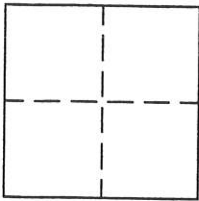
CORNER RECORD

Document Number # 206

Section 34, T.23N.R13E. M.D.M.

County of Plumas, California

Brief Legal Description Lot 50 Delleker Subdivision, Unit No. 2



CORNER TYPE

Government Corner [] Control []
Meander [] Property [X]
Rancho [] Other []
Date of Survey March 25, 2002

COORDINATES (Optional)

N.
E.
Zone Datum
Elev.

Corner- Left as found [] Found and tagged [] Established [] Reestablished [X] Rebuilt []

Identification and type of corner found: Evidence used to identify or procedure used to establish or reestablish the corner: Found original Lot Corner Monuments as indicated on attached sketch,

A description of the physical condition of the monument as found and as set or reset: Set 5/8" rebar with Aluminum cap stamped L.S. 2843 at Southeast corner of Lot from found monuments.

SURVEYOR'S STATEMENT

This Corner Record was prepared by me or under my direction in conformance with the Land Surveyors' Act on March 25, 2002.

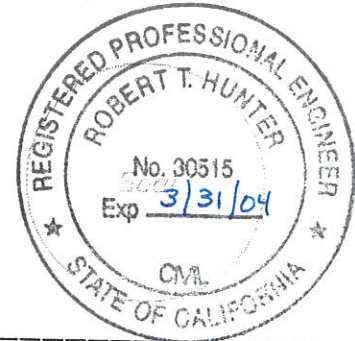
Signed John W. Hamby L.S. 2843
John W. Hamby



COUNTY SURVEYOR'S STATEMENT

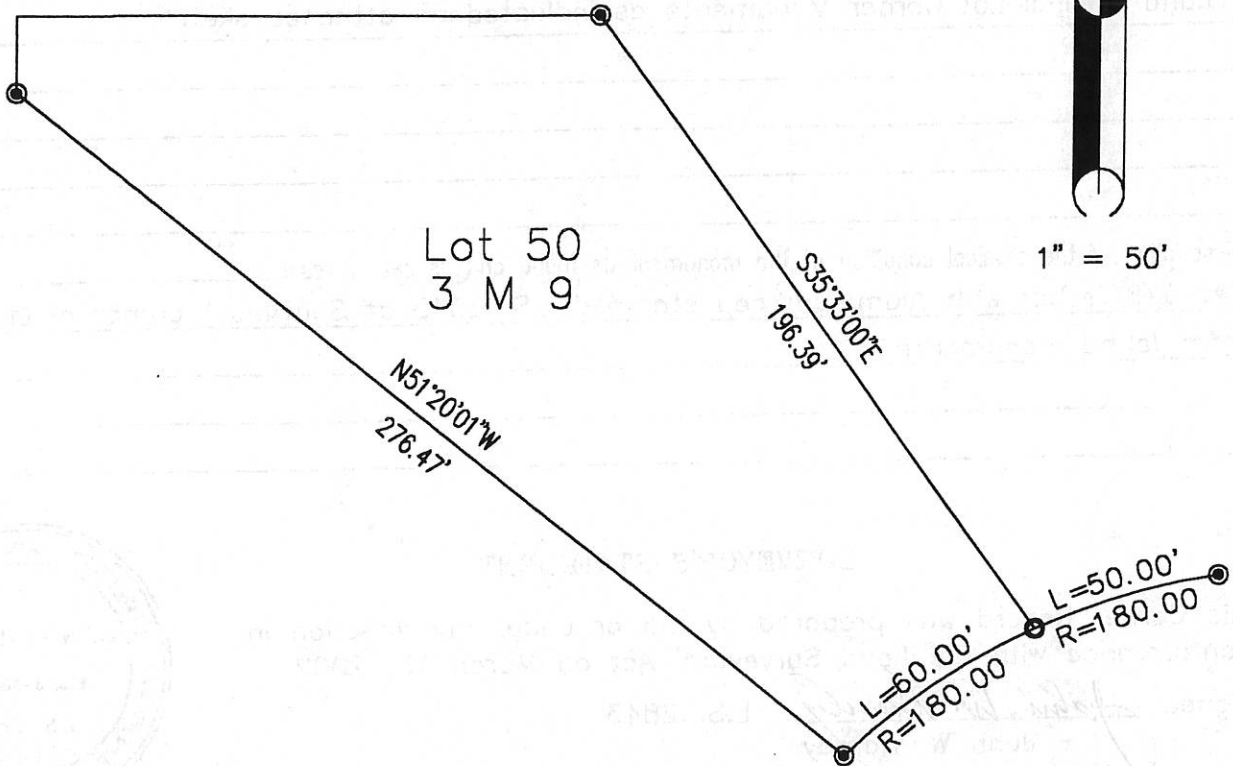
This Corner Record was received March 26th 2002 and examined and filed April 3rd 2002.

Signed R Tom Hunter Title P.C. Engineer



County Surveyor's Comment

corner falls in
fence post



1" = 50'

Lot 50
3 M 9

N51°20'01"W
276.47'

S35°33'00"E
196.39'

L=60.00'
R=180.00'

L=50.00'
R=180.00'

- Found monument per 3 M 9
- Set 5/8" rebar with aluminum cap LS 2843

Hamby Surveying Inc.
P.O. Box 1209
Portola, CA 96122
(530) 832-5571

01218