

CORNER RECORD

Document Number 208

City of Quincy

County of Plumas, California

The Southwest corner of Lot 1 of Block A, Agassiz addition to Quincy shown in Book "A" of Maps at Page 43 and in Book 9 of Records of Surveys at Page 52 in the office of the Plumas County Recorder.

CORNER TYPE

Property Corner

Date of Survey March 28, 2002

Corner - Left as found Found and tagged Established Reestablished
Rebuilt

Identification and type of corner found: Evidence used to identify or procedure used to establish or reestablish the corner:

See Sketch - Page 2

A description of the physical condition of the monument as found and as set or reset:

See Sketch - Page 2

SURVEYOR'S STATEMENT

THIS CORNER RECORD WAS PREPARED BY ME OR UNDER MY DIRECTION IN CONFORMANCE WITH THE LAND SURVEYOR'S ACT ON MARCH 28, 2002.

Signed Gerald Joseph Tibbedeaux P.L.S. 6051
Gerald Joseph Tibbedeaux

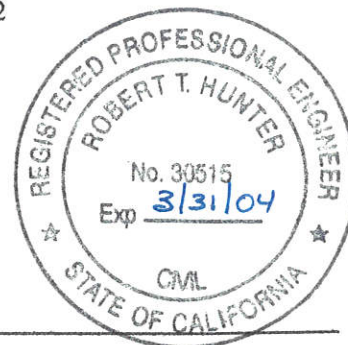


COUNTY SURVEYOR'S STATEMENT

THIS CORNER RECORD WAS RECEIVED April 8th, 2002

AND EXAMINED AND FILED April 12th, 2002

Signed R. Tom Hunter R.C.E. 30515
R. Tom Hunter
Plumas County Surveyor



County Surveyor's Comment

LEONARD AVENUE

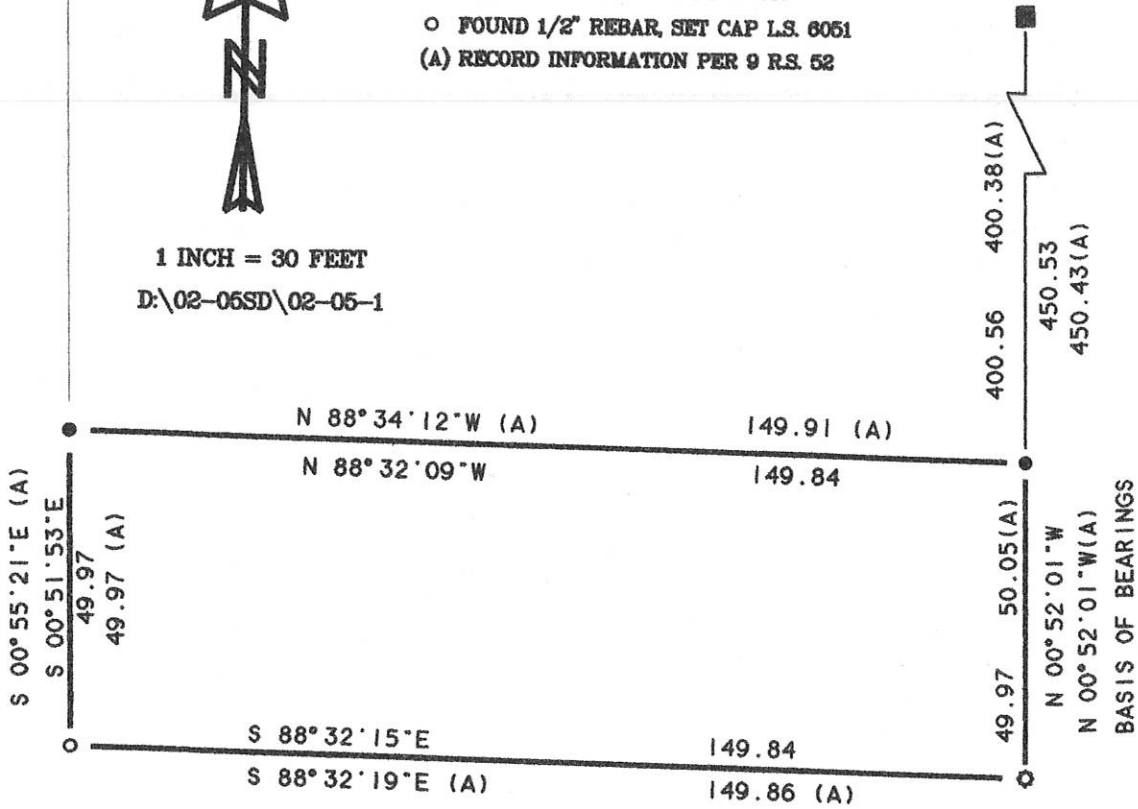


1 INCH = 30 FEET

D:\02-06SD\02-05-1

LEGEND

- FOUND 8X8 CONC. POST & DISK MARKED L.S. 1880
- FOUND 1/2" REBAR & CAP R.C.E. 22836
- FOUND NAIL & TAG R.C.E. 22836
- FOUND 1/2" REBAR, SET CAP L.S. 6051
- (A) RECORD INFORMATION PER 9 R.S. 52



RAILWAY AVENUE

LAWRENCE STREET

CORNER RECORD
FOR
SCOTT DUDLEY

LOT 1, BLOCK A "AGASSIZ ADDITION TO QUINCY"
BOOK "A" OF MAPS, PAGE 43
SHOWN IN BOOK 9 OF RECORDS OF SURVEYS, PAGE 52
WITHIN SECTION 14, T. 24N., R. 9E., M.D.M
QUINCY, PLUMAS COUNTY, CALIFORNIA
SCALE 1 INCH = 30 FEET MARCH, 2002

Tibbedeaux Surveying
P.O. Box 1980 / 565 Ridge St.
Portola, CA 96122
(530) 832-5772