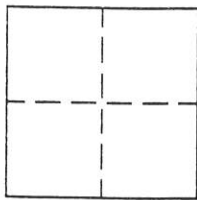


CORNER RECORD

Document Num: 209

A Portion of Section 24 T.22N., R.12E., M.D.M. County of Plumas, California

Brief Legal Description Parcel 2 3 PM 101



CORNER TYPE

Government Corner Control
Meander Property
Rancho Other
Date of Survey Feb. 15, 2002

COORDINATES
(Optional)

N. _____
E. _____
Zone _____ Datum _____
Elev. _____

Corner— Left as found Found and tagged Established Reestablished Rebuilt

Identification and type of corner found: Evidence used to identify or procedure used to establish or reestablish the corner:
Monuments were found per record, 3 PM 101, Official Records of County of Plumas
as shown on attached sketch. Monuments set as Witness Corners on road easement.

A description of the physical condition of the monument as found and as set or reset:
Set 5/8" rebar with aluminum cap stamped LS 5620 for witness points.

SURVEYOR'S STATEMENT

This Corner Record was prepared by me or under my direction in conformance with the Land Surveyors' Act on March 8, 2002.

Signed John L. Owen L.S. 5620.
John L. Owen



COUNTY SURVEYOR'S STATEMENT

This Corner Record was received 3/22/02 2002 and examined and filed 3/26/02 2002.

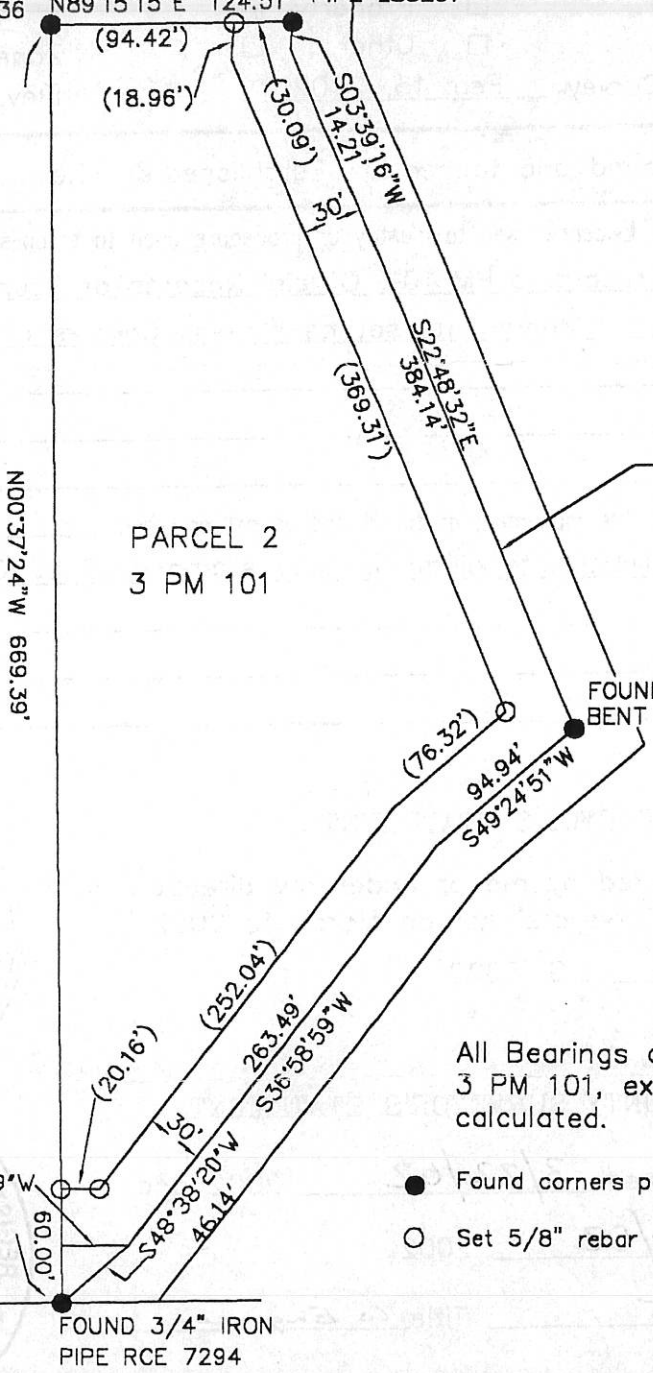
Signed R. Tom Hunter Title Co Engineer



County Surveyor's Comment _____

FOUND 3/4" IRON
PIPE LS3336

FOUND 3/4" IRON
PIPE LS3297



C/L 60' Road Easement
per 3 PM 101

PARCEL 2
3 PM 101

FOUND 3/4" IRON PIPE
BENT LS3297

FOUND 3/4" IRON
PIPE RCE 7294

All Bearings and Distances are per
3 PM 101, except () denotes
calculated.

- Found corners per 3 PM 101 as shown
- Set 5/8" rebar with aluminum cap LS 5620

Hamby Surveying Inc.
P.O. Box 1209
Portola, CA 96122
(530) 832-5571