

# CORNER RECORD

Document Number 210

City of North of Taylorsville County of Plumas, California  
The Southwest corner of Lot 4 of Engle-Mine Subdivision, Book 4 of Subdivision Maps, Page 141 in the office of the Plumas County Recorder.

## CORNER TYPE

Property Corner

Date of Survey April 14, 2002

Corner - Left as found  Found and tagged  Established  Reestablished   
Rebuilt

Identification and type of corner found: Evidence used to identify or procedure used to establish or reestablish the corner:

See Sketch - Page 2

A description of the physical condition of the monument as found and as set or reset:

See Sketch - Page 2

## SURVEYOR'S STATEMENT

THIS CORNER RECORD WAS PREPARED BY ME OR UNDER MY DIRECTION IN CONFORMANCE WITH THE LAND SURVEYOR'S ACT ON APRIL 14, 2002.

Signed Gerald Joseph Tibbedeaux P.L.S. 6051  
Gerald Joseph Tibbedeaux



## COUNTY SURVEYOR'S STATEMENT

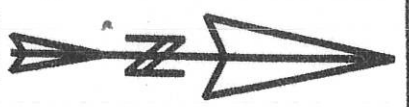
THIS CORNER RECORD WAS RECEIVED 3/22/02, 2002  
AND EXAMINED AND FILED 3/26/02, 2002

Signed R. Tom Hunter R.C.E. 30515  
R. Tom Hunter  
Plumas County Surveyor

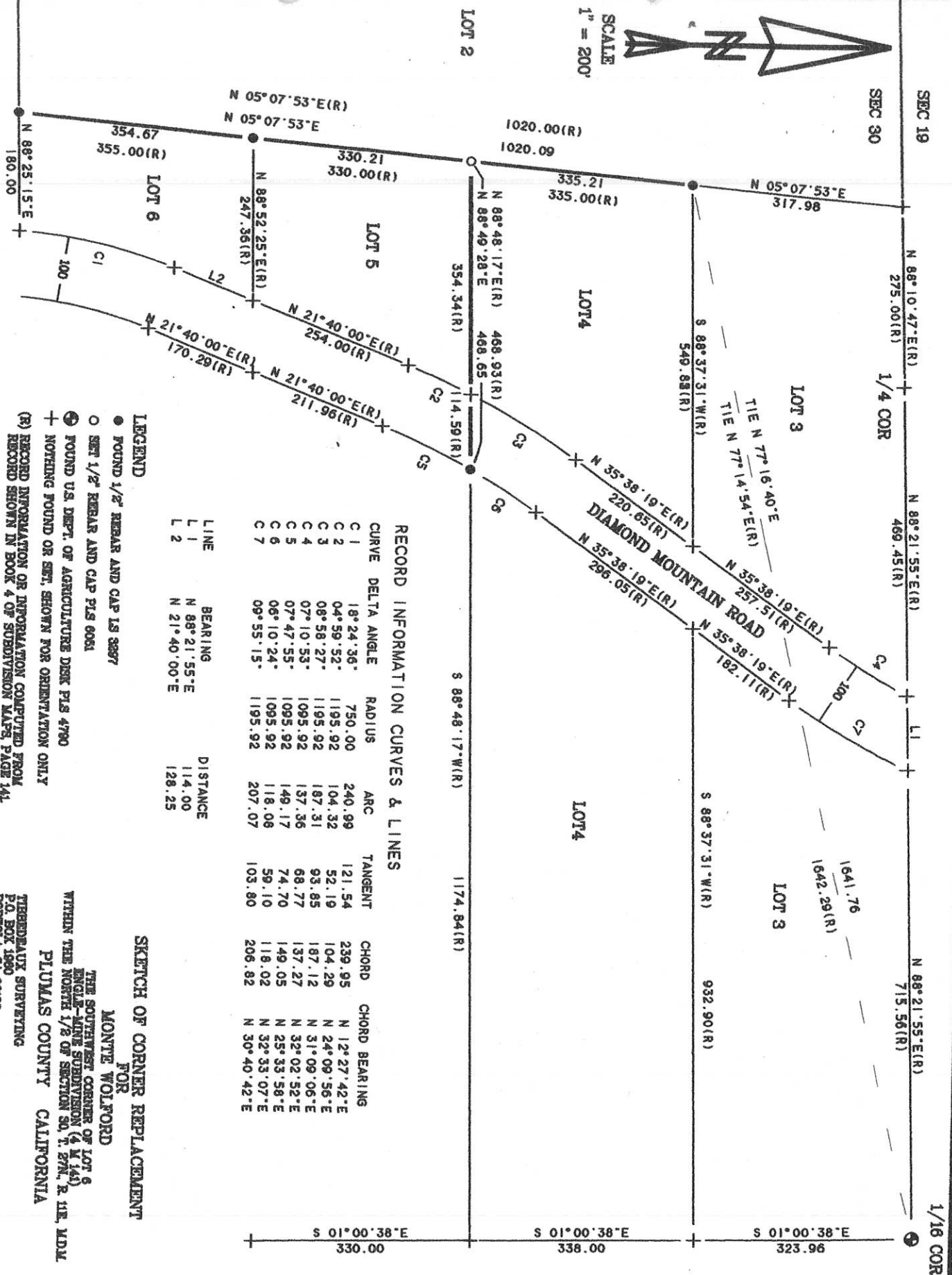


County Surveyor's Comment

\_\_\_\_\_  
\_\_\_\_\_  
\_\_\_\_\_



SCALE  
1" = 200'



RECORD INFORMATION CURVES & LINES

CURVE	DELTA ANGLE	RADIUS	ARC	TANGENT	CHORD	CHORD BEARING
C 1	18°24'36"	750.00	240.99	121.54	239.95	N 12°27'42"E
C 2	04°59'52"	1195.92	104.32	52.19	104.29	N 24°09'56"E
C 3	08°58'27"	1195.92	187.31	93.85	187.12	N 31°09'06"E
C 4	07°10'53"	1095.92	137.36	68.77	137.27	N 32°02'52"E
C 5	07°47'55"	1095.92	149.17	74.70	149.05	N 25°33'58"E
C 6	06°10'24"	1095.92	118.06	59.10	118.02	N 32°33'07"E
C 7	09°55'15"	1195.92	207.07	103.80	206.82	N 30°40'42"E

LEGEND

- FOUND 1/2" REBAR AND CAP IS 3897
- SET 1/2" REBAR AND CAP PLS 6061
- ⊕ FOUND U.S. DEPT. OF AGRICULTURE DEER PLS 4790
- + NOTHING FOUND OR SET, SHOWN FOR ORIENTATION ONLY
- (R) RECORD INFORMATION OR INFORMATION COMPUTED FROM RECORD SHOWN IN BOOK 4 OF SUBDIVISION MAPS PAGE 141.

SKETCH OF CORNER REPLACEMENT FOR MONTE WOLFORD

THE SOUTHWEST CORNER OF LOT 6  
ANGLE-MINE SUBDIVISION (4 N 14)  
WITHIN THE NORTH 1/2 OF SECTION 30, T. 27N., R. 11E. WDM  
PLUMAS COUNTY CALIFORNIA

THEODORA SURVEYING  
P.O. BOX 1890  
FORTOLA, CA 96122

D:\02-08M\02-08-1