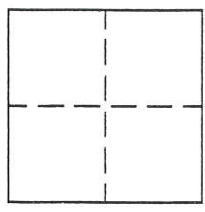


CORNER RECOR

Document Number 211

A portion of Section 30, T23N, R14E, MDBM County of Plumas, California

Brief Legal Description Parcel 1 of 9 PM 10 Official Records Plumas County



CORNER TYPE

Government Corner Control
Meander Property
Rancho Other
Date of Survey April 15, 2002

COORDINATES
(Optional)

N. _____
E. _____
Zone _____ Datum _____
Elev. _____

Corner- Left as found Found and tagged Established Reestablished Result

Identification and type of corner found: Evidence used to identify or procedure used to establish or reestablish the corner:
Found points in good condition as shown on attached sketch.

A description of the physical condition of the monument as found and as set or reset: _____
Set point from points as shown on attached sketch.

SURVEYOR'S STATEMENT

This Corner Record was prepared by me or under my direction in conformance with the Land Surveyors' Act on April 15, 2002.

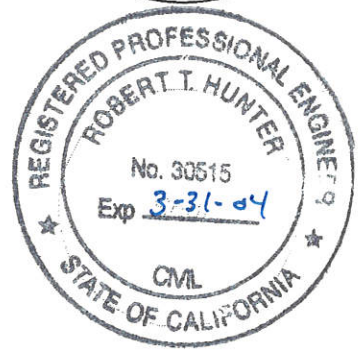
Signed John W. Hamby L.S. 2843
John W. Hamby



COUNTY SURVEYOR'S STATEMENT

This Corner Record was received 5-15 2002 and examined and filed 5-28 2002.

Signed R. Tom Hunter Title Co. Engineer

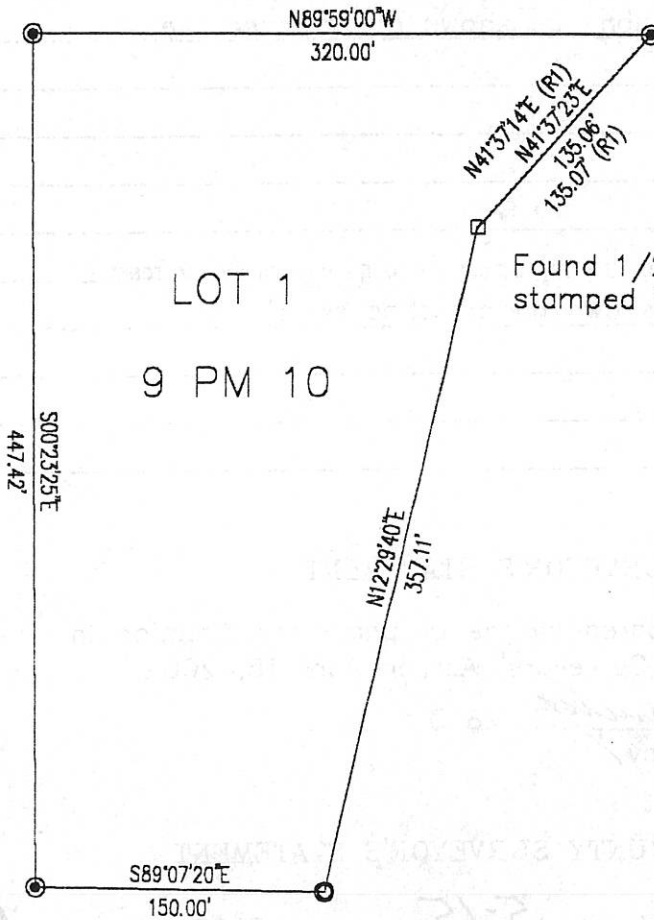


County Surveyor's Comment _____

(R1) Record per 9 PM 10



1" = 100'



LOT 1
9 PM 10

Found 1/2" rebar with plastic cap stamped RCE 22836

- Set 5/8" rebar with aluminum cap stamped LS 2843
- ⊙ Found 1/2" rebar with aluminum cap stamped LS 2843

Hamby Surveying Inc.
P.O. Box 1209
Portola, CA 96122
(530) 832-5571

02060