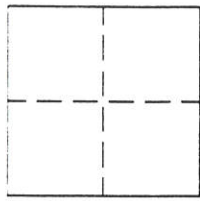


CORNER RECORD

Document Number 212

Portion of the S.W. 1/4 Sec.24, T22N,R12E County of Plumas, California
Brief Legal Description Being Parcel 2 of 7 PM 127



CORNER TYPE

Government Corner Control
 Meander Property
 Rancho Other
 Date of Survey MAY 24, 2002

COORDINATES
(Optional)

N. _____
 E. _____
 Zone _____ Datum _____
 Elev. _____

Corner— Left as found Found and tagged Established Reestablished Rebuilt

Identification and type of corner found: Evidence used to identify or procedure used to establish or reestablish the corner:
Found corners as shown on attached map per 7 PM 127.

A description of the physical condition of the monument as found and as set or reset:
Set southwest corner of Parcel 2, per 7 PM 127.

SURVEYOR'S STATEMENT

This Corner Record was prepared by me or under my direction in conformance with the Land Surveyors' Act on May 23, 2002.

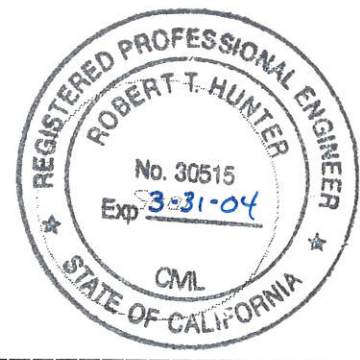
Signed John W. Hamby L.S. 2843
John W. Hamby



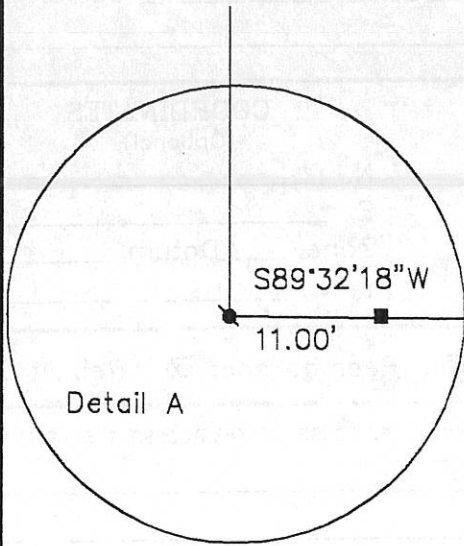
COUNTY SURVEYOR'S STATEMENT

This Corner Record was received 6-04 2002 and examined and filed 6-19 2002.

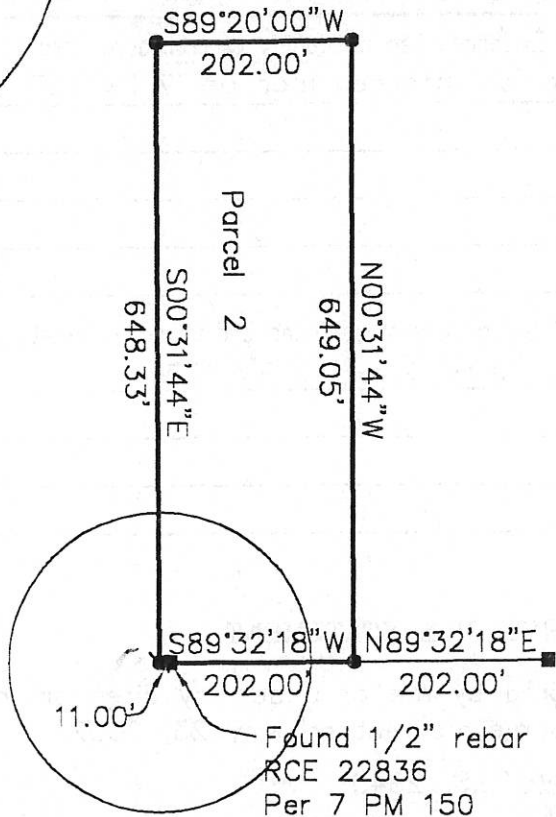
Signed R Tom Hunter Title Co. Engineer



County Surveyor's Comment _____



Detail A



Parcel 2

11.00'

Found 1/2" rebar
RCE 22836
Per 7 PM 150

Found 3/4" Iron Pipe
tag missing

see detail A



Scale 1" = 200'

LEGEND

- FOUND point as described
- FOUND Rebar with Aluminum Cap RCE 26870
- ⊙ SET 5/8" Rebar & Aluminum Cap LS 2843

Hamby Surveying Inc.
P.O. Box 1209
Portola, CA 96122
(530) 832-5571

02099