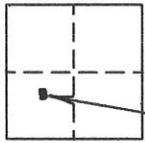


CORNER RECORD

COUNTY OF Plumas T. 28 N R. 8 E Mount Diablo MERIDIAN CALIFORNIA

CORNER TYPE: GOV'T CORNER MEANDER RANCHO CONTROL OTHER
 CORNER IDENTIFICATION - DATE OF VISIT June 10, 20 02



Sec 19
approximate location

CORNER - LEFT AS FOUND FOUND AND TAGGED REESTABLISHED OBLITERATED CORNER REBUILT

PHYSICAL DESCRIPTION OF CORNER FOUND: EVIDENCE AND METHOD USED TO IDENTIFY OR REESTABLISH

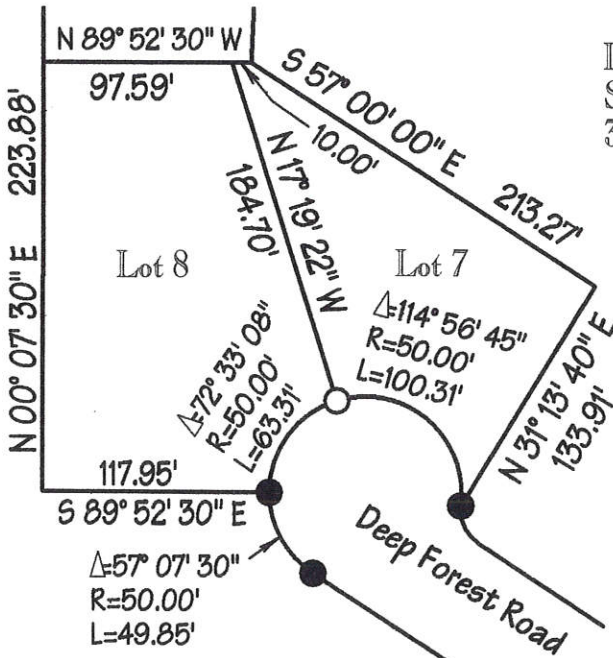
Found 3/4" IP with the top portion broken off and missing. Verified position from found monuments on cul-de-sac.

PHYSICAL DESCRIPTION OF MONUMENTS REBUILT OR PERPETUATED

Set 5/8" rebar and plastic plug stamped LS 4530 inside of remains of pipe.

CALIFORNIA COORDINATE SYSTEM ORDER: FIRST SECOND THIRD
 STATIONS USED: NGS (USC & GS) STATE COUNTY OTHER STATION _____ EASTINGS (X) _____
 ZONE _____ ELEVATION _____ NORTHINGS (Y) _____

SKETCH: (Include reference tie or witness points, remarks and topo of area)



Lake Almanor Country Club
Subdivision Unit No. One-A
3 Maps 29.

Bearings and distances shown
are record per 3 Maps 29.



Scale: 1" = 100'

● Indicates found 3/4" ip tagged
RCE 7294 per 3 Maps 29.

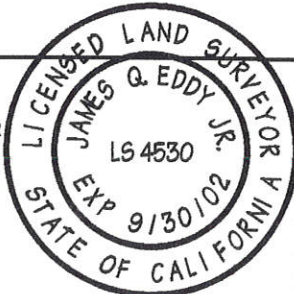
○ Indicates found remains of original
corner & set 5/8" rebar & plug
stamped LS 4530.

SURVEYOR'S CERTIFICATE

THIS CORNER RECORD WAS PREPARED BY ME OR UNDER MY DIRECTION IN CONFORMANCE WITH THE LAND SURVEYORS ACT ON June 10, 20 02.

SIGNED James G. Eddy Jr.
L.S. or R.C.E. No. LS 4530

SEAL



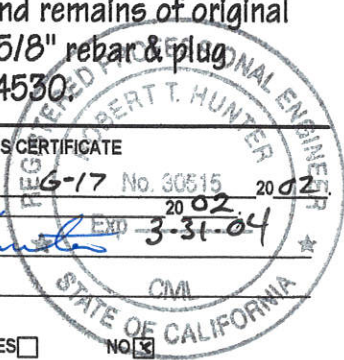
COUNTY SURVEYOR'S CERTIFICATE

THE CORNER RECORD WAS RECEIVED AND EXAMINED AND FILED 6-25 6-17 No. 30815 20 02

BY: R. Tom Hunter Exp. 3-31-04

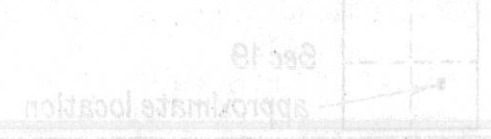
TITLE: Co. Engineer

DOCUMENT No. 213
STATEMENT ON BACK OF SHEET YES NO



CORNER RECORD

COUNTY OF Plumas T. 28N R. 8E Mount Diablo
 CORNER TYPE: ADJ. CORNER MEMBER RANGE CONTROL OTHER
 CORNER IDENTIFICATION - DATE OF VISIT: _____



CORNER - LEFT AS FOUND FOUND AND TAGGED REEL LABELLED/ILLUSTRATED CORNER RESULT
 PHYSICAL DESCRIPTION OF CORNER FOUND: EVIDENCE AND METHOD USED TO DETERMINE CORNER LOCATION

Found 314" IP with the top portion broken off and missing. Vertical section from found monument on left-hand.

Get 314" rebar and plastic pipe in place. 1-45-88



Bearings and distances shown are those per 3 maps 28.
 Scale 1" = 100'

Indicates found 314" IP tagged
 KCE 7294 per 3 Maps 28.

Indicates found remains of original corner & set 314" rebar & pipe stamped 1-45-88

COUNTY SURVEYOR'S OFFICE
 THE FORMER RECORD WAS RECEIVED AND EXAMINED AND FILED
 W. J. [Signature]
 COUNTY SURVEYOR
 STATE OF CALIFORNIA

LAND MEASUREMENTS
 JAMES O. SMITH
 1-45-88
 STATE OF CALIFORNIA
 LICENSED LAND MEASURER

SURVEYOR'S CERTIFICATE
 THIS CORNER RECORD WAS PREPARED BY ME OR UNDER MY DIRECTION IN CONFORMANCE WITH THE LAND SURVEYORS ACT
 SIGNED: [Signature]
 1-45-88