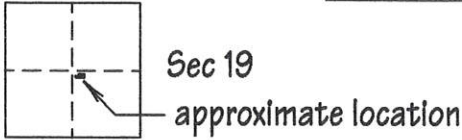


CORNER RECORD

COUNTY OF Plumas T. 28 N R. 8 E Mount Diablo MERIDIAN CALIFORNIA

CORNER TYPE: GOV'T CORNER MEANDER RANCHO CONTROL OTHER
 CORNER IDENTIFICATION - DATE OF VISIT June 10, 20 02



CORNER - LEFT AS FOUND FOUND AND TAGGED REESTABLISHED OBLITERATED CORNER REBUILT

PHYSICAL DESCRIPTION OF CORNER FOUND: EVIDENCE AND METHOD USED TO IDENTIFY OR REESTABLISH

Found Southerly corners of Lot 2. Due to construction of fences and driveways the remaining corners were not found. The two Southerly corners were used to reestablish the missing ones.

PHYSICAL DESCRIPTION OF MONUMENTS REBUILT OR PERPETUATED

Set Chis. "X" 's in concrete walls, stone column and steps. Set nail and tag LS 4530 at one corner.

CALIFORNIA COORDINATE SYSTEM ORDER: FIRST SECOND THIRD
 STATIONS USED: NGS (USC & GS) STATE COUNTY OTHER STATION _____ EASTINGS (X) _____
 ZONE _____ ELEVATION _____ NORTHINGS (Y) _____

SKETCH: (Include reference tie or witness points, remarks and topo of area)

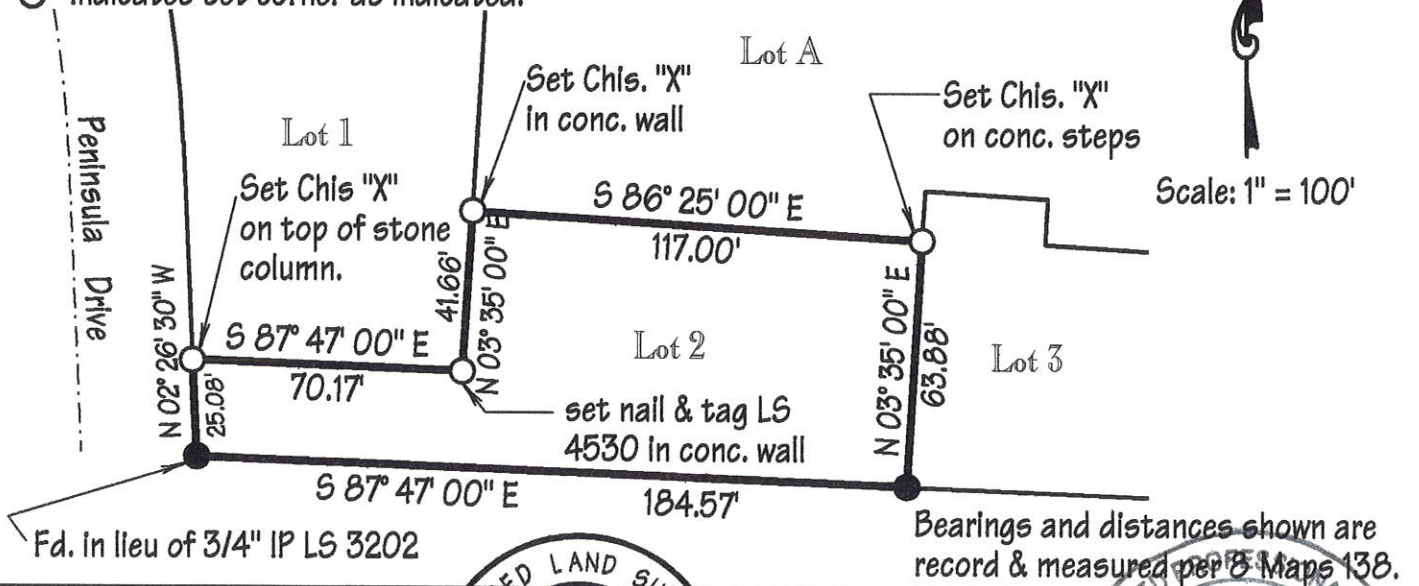
● Indicates found 5/8" rebar tagged RCE 29113 per 8 Maps 138.

○ Indicates set corner as indicated.

Kokanee Subdivision
8 Maps 138.



Scale: 1" = 100'



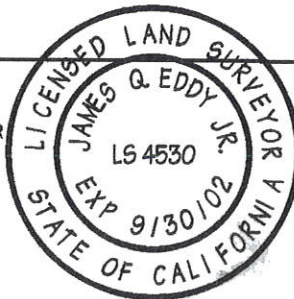
SURVEYOR'S CERTIFICATE

THIS CORNER RECORD WAS PREPARED BY ME OR UNDER MY DIRECTION IN CONFORMANCE WITH THE LAND SURVEYORS ACT ON June 10, 20 02.

SIGNED James Q. Eddy Jr.

L.S. or R.C.E. No. LS 4530

SEAL



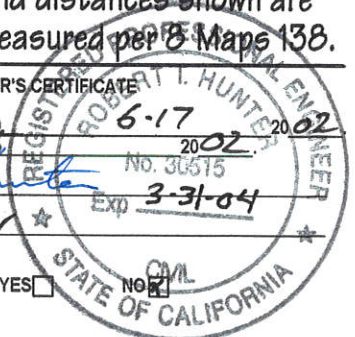
COUNTY SURVEYOR'S CERTIFICATE

THE CORNER RECORD WAS RECEIVED AND EXAMINED AND FILED 6-23 20 02

BY: R. Tom Hunter

TITLE: Co. Engineer

DOCUMENT No. 214
STATEMENT ON BACK OF SHEET YES



CORNER RECORD

COUNTY: Plumas T. 25 N. R. 9 E. Mount Diablo

CORNER LOCATION - DATE OF VISIT: June 10, 1952

CORNER TYPE - POINT CORNER: OTHER: CONTROL:

CORNER - LAST FOUND: FOUND AND TAGGED: RESTATEMENT OF INTEREST: RESULT:



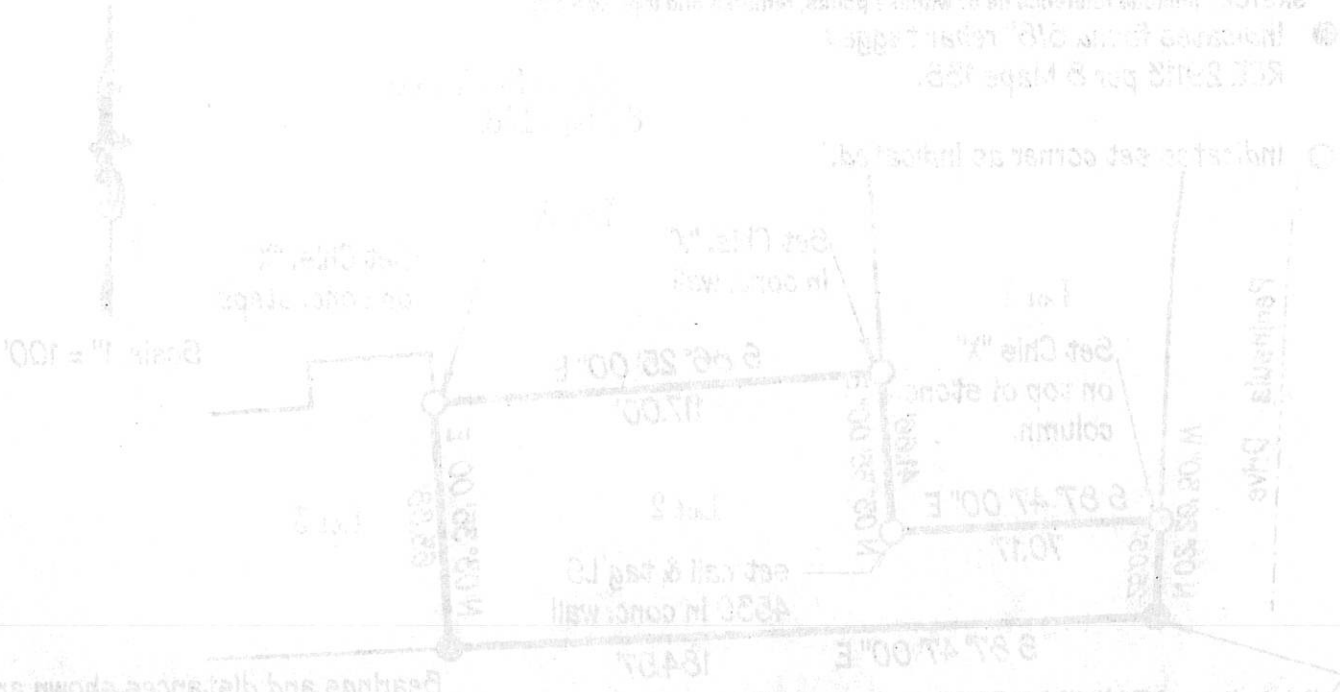
PHYSICAL DESCRIPTION OF CORNER FOUND: EVIDENCE AND METHOD USED TO LOCATE: 1952

PHYSICAL DESCRIPTION OF CORNER FOUND: Found Southern corner of Lot 2, 1/4 to corner of fence and always the remaining corners were not found. The two Southern corners were seen to establish the missing ones.

PHYSICAL DESCRIPTION OF CORNER FOUND: Set Chis. "X" is in concrete wall, stone joint, and top of L.S. 4830 at the corner.

PHYSICAL DESCRIPTION OF CORNER FOUND: Set Chis. "X" on top of stone column.

PHYSICAL DESCRIPTION OF CORNER FOUND: Set Chis. "X" in concrete wall.



BEARINGS AND DISTANCES SHOWN ARE RECORD & MEASURED BY W. H. GIBSON FEB 21 1952

COUNTY SURVEYOR'S CERTIFICATE: THE CORNER RECORD WAS RECEIVED AND EXAMINED AND FILED 18433 FEB 21 1952

STATE OF CALIFORNIA: COUNTY OF PLUMAS: W. H. Gibson COUNTY SURVEYOR

STATE OF CALIFORNIA: COUNTY OF PLUMAS: W. H. Gibson COUNTY SURVEYOR

THIS CORNER RECORD WAS PREPARED BY ME OR UNDER MY DIRECTOR IN ACCORDANCE WITH THE LAND SURVEYORS ACT ON June 10, 1952

SIGNED W. H. Gibson LAND SURVEYOR

STATE OF CALIFORNIA: COUNTY OF PLUMAS: W. H. Gibson COUNTY SURVEYOR