

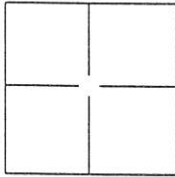
CORNER RECORD

Document Number 217

City of _____

County of PLIMAS, California

Brief Legal Description SE COR PARCEL 2, 11 PM 54, T26N R9E S1



CORNER TYPE

Government Corner Control
Meander Property
Rancho Other

Date of Survey JULY 1, 2002

COORDINATES(Optional)

N. _____
E. _____
Zone _____ NAD27 NAD83
NAD83 Epoch _____
Elevation _____
Vert. Datum: NGVD29 NAV88
Meas. Units: Metric Imperial

Corner - Left as found Found and tagged Established Reestablished Rebuilt

Identification and type of corner found: Evidence used to identify or procedure used to establish or reestablish the corner:

SEE MAP ON REVERSE

A description of the physical condition of the monument as found and as set or reset:

SEE MAP ON REVERSE

SURVEYOR'S STATEMENT

This Corner Record was prepared by me or under my direction in conformance with

the Land Surveyor's Act on JULY 22, 2002.

Signed Richard Knottgen P.L.S. or R.C.E. Number L 7794



COUNTY SURVEYORS STATEMENT

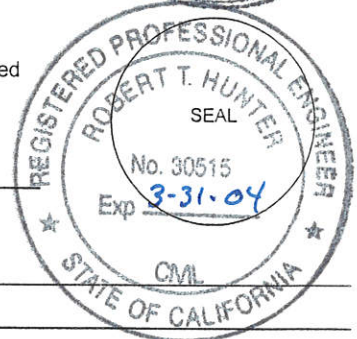
This Corner Record was received July 30, 2002 and examined

and filed August 6, 2002.

Signed R. Tom Hunter P.L.S. or R.C.E. Number 30515

Title County Surveyor

County Surveyor's Comment _____



#217

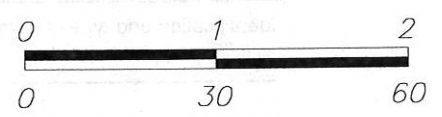
CORNER RECORD

Document Number: 217
County of: PLUMAS
Legal Description: SET COR PARCEL 5.11 BL 24 STEVEN RCE 21



SCALE

1 INCH = 30 FEET



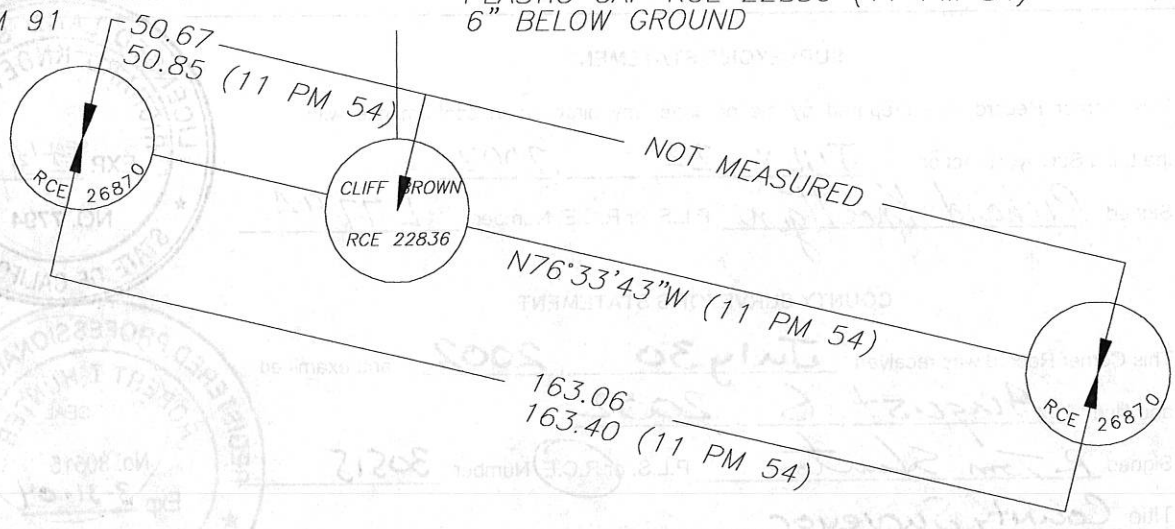
PARCEL 2
(11 PM 54)

PARCEL 1
(11 PM 54)

S00°05'19"W

FOUND 3/4" OD IP WITH
BRASS TAG RCE 26870
6 PM 91

FOUND 1/2" REBAR WITH YELLOW
PLASTIC CAP RCE 22836 (11 PM 54)
6" BELOW GROUND



FOUND 3/4" OD IP WITH
BRASS TAG RCE 26870
6 PM 91

