

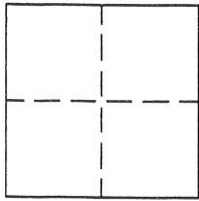
CORNER RECORD

Document Number 218

Section 8, T.22N.R.13E m.D.M.

County of Plumas, California

Brief Legal Description Portion Parcel 2, 10 PM 64



CORNER TYPE

Government Corner Control
Meander Property
Rancho Other
Date of Survey July 15, 2002

COORDINATES (Optional)

N. _____
E. _____
Zone _____ Datum _____
Elev. _____

Corner- Left as found Found and tagged Established Reestablished Rebuilt

Identification and type of corner found: Evidence used to identify or procedure used to establish or reestablish the corner:
Found monuments shown on the attached sketch in good condition and as shown on the map filed in the office of the Recorder of Plumas County in Book 10 PM 64.

A description of the physical condition of the monument as found and as set or reset:
Set 5/8" rebar with aluminum cap stamped LS 2843 as indicated on attached sketch.

SURVEYOR'S STATEMENT

This Corner Record was prepared by me or under my direction in conformance with the Land Surveyors' Act on July,15, 2002

Signed John W. Hamby L.S. 2843
John W. Hamby



COUNTY SURVEYOR'S STATEMENT

This Corner Record was received July 31 2002 and examined and filed August 6 2002.

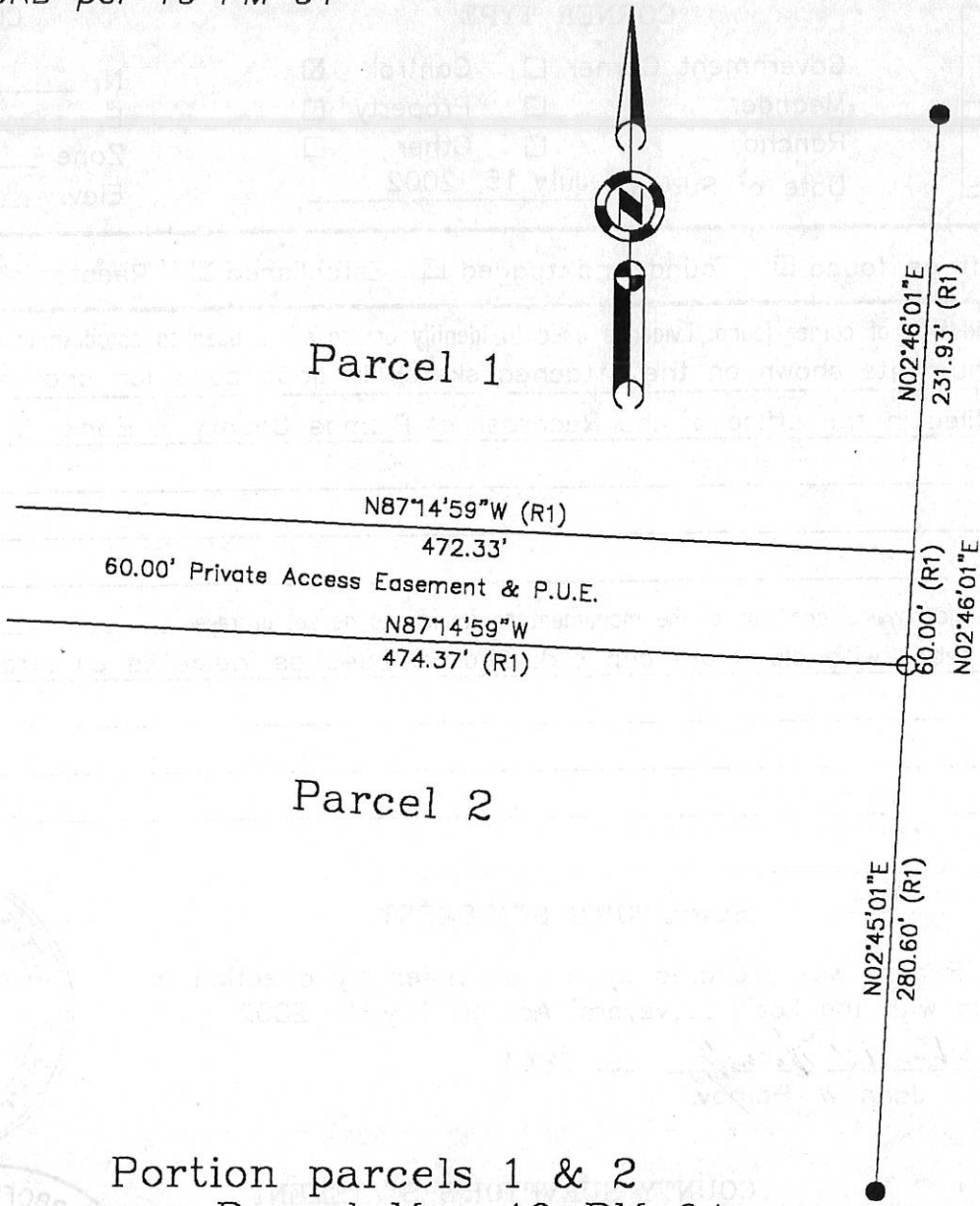
Signed R Tom Hunter Title County Surveyor



County Surveyor's Comment _____

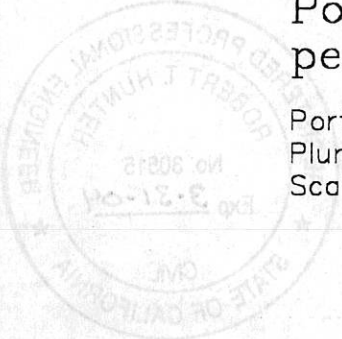
- FOUND 1/2" Rebar with Aluminum Cap RCE 13225
- SET 5/8" Rebar & Aluminum Cap LS 2843

(R1) RECORD per 10 PM 64



Portion parcels 1 & 2
per Parcel Map 10 PM 64

Portion Section 8, T.22N.R.13E. M.D.M.
Plumas County California
Scale 1"=100' July 2002



Hamby Surveying Inc.
P.O. Box 1209
Portola, CA 96122
(530) 832-5571