

# CORNER RECORD

Document Number 220

Nearest town Taylorsville County of Plumas, California  
Lots 7 & 8 of Carroll Acres Unit No. 1, book 2 of Subdivision Maps, Page 64 in the office of the Plumas  
County Recorder.

## CORNER TYPE

Monuments along property line common to lots 8 and 9, Book 2 of Subdivision Maps Page 64

Date of Survey August 30, 2002

Corner - Left as found  Found and tagged  Established  Reestablished   
Rebuilt

Identification and type of corner found: Evidence used to identify or procedure used to establish or  
reestablish the corner:

See Sketch - Page 2

A description of the physical condition of the monument as found and as set or reset:

See Sketch - Page 2

## SURVEYOR'S STATEMENT

THIS CORNER RECORD WAS PREPARED BY ME OR UNDER MY DIRECTION IN  
CONFORMANCE WITH THE LAND SURVEYOR'S ACT ON AUGUST 30, 2002.

Signed Gerald Joseph Tibbedeaux P.L.S. 6051  
Gerald Joseph Tibbedeaux

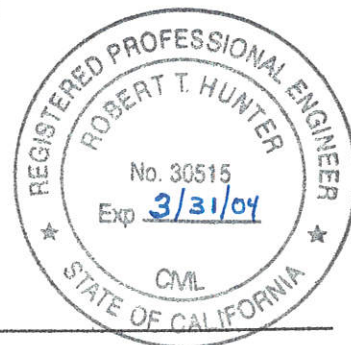


## COUNTY SURVEYOR'S STATEMENT

THIS CORNER RECORD WAS RECEIVED 9-3, 2002

AND EXAMINED AND FILED September 10, 2002

Signed R. Tom Hunter R.C.E. 30515  
R. Tom Hunter  
Plumas County Surveyor



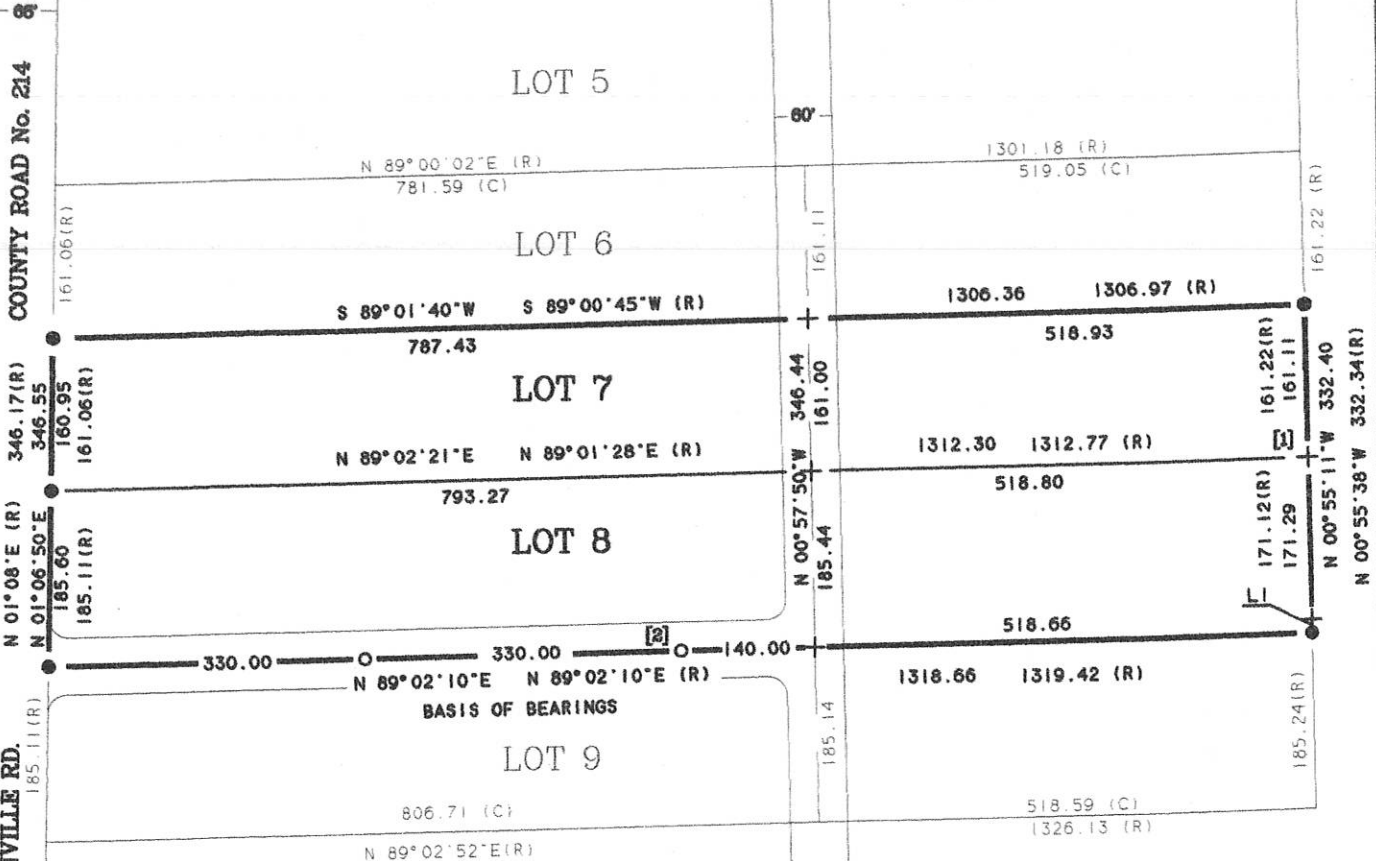
County Surveyor's Comment

---

---

---

(5 M 121)



TAYLORSVILLE - SUSANVILLE RD.



1 INCH = 200 FEET

**RECORD**

LINE	BEARING	DISTANCE
L 1	N 00°56'32"W	14.12

**MEASURED**

LINE	BEARING	DISTANCE
L 1	N 00°56'32"W	14.12

**LEGEND**

- FOUND 1 INCH IRON PIPE AND TAG R.C.E. 11128 OR NOTED
- SET 1/2 INCH REBAR AND CAP P.L.S. 6061 OR NOTED
- + RECORD LOCATION, NOTHING FOUND OR SET
- (R) RECORD INFORMATION PER BOOK 2 OF SUBDIVISION MAPS PAGE 64 (CARROL ACRES UNIT No. 1)
- (C) INFORMATION CALCULATED FROM RECOVERED MONUMENTS AND RECORD DATA
- [No.] KEY TO CORNER NOTES

**BASIS OF BEARINGS**

THE BEARING OF S 89-02-10 W, FOR THE PROPERTY LINE COMMON TO LOTS 8 AND 9 SHOWN IN BOOK 2 OF SUBDIVISION MAPS AT PAGE 64 IS THE BASIS OF BEARINGS SHOWN ON THIS SKETCH.

**CORNER NOTES**

- [1] NOTHING FOUND OR SET, FROM WHICH FOUND: 1 INCH IRON PIPE (OPEN) N 89-02-21 E, A DISTANCE OF 0.23 FEET
- [2] SET 3/4 INCH REBAR AND TAG P.L.S. 6061

**SKETCH OF PROPERTY LINE DEFINITION  
FOR  
GEORGE SCHIMMEL  
OF**

**THE PROPERTY LINE COMMON TO LOTS 8 & 9  
BOOK 2 OF SUBDIVISION MAPS, PAGE 64**

WITHIN SECTION 31, T. 27N., R. 11E., MDM

PLUMAS COUNTY CALIFORNIA

TIBBEDEAUX SURVEYING  
P.O. BOX 1960 / 565 RIDGE ST.  
PORTOLA, CA 96122  
(530) 832-5772