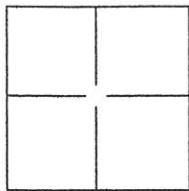


CORNER RECORD

Document Number 221
County of Plumas, California
Brief Legal Description T24N R9E S7 TRS 77



CORNER TYPE

Government Corner Control
Meander Property
Rancho Other

COORDINATES(Optional)

N. _____
E. _____
Zone _____ NAD27 NAD83
NAD83 Epoch _____
Elevation _____
Vert. Datum: NGVD29 NAV88
Meas. Units: Metric Imperial

Date of Survey August 26, 2002

Corner - Left as found Found and tagged Established Reestablished Rebuilt

Identification and type of corner found: Evidence used to identify or procedure used to establish or reestablish the corner:
SEE MAP ON REVERSE

A description of the physical condition of the monument as found and as set or reset:
SEE MAP ON REVERSE

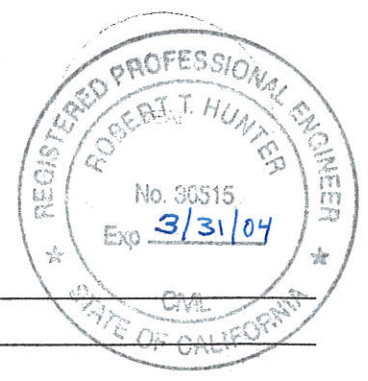
SURVEYOR'S STATEMENT

This Corner Record was prepared by me or under my direction in conformance with the Land Surveyor's Act on SEP 5, 2002.
Signed Richard Knoettgen (P.L.S.) or R.C.E. Number L 7794
For the State of California
Department of Transportation



COUNTY SURVEYOR'S STATEMENT

This Corner Record was received September 5, 2002 and examined and filed September 10, 2002.
Signed R Tom Hunter P.L.S. or R.C.E. Number 30515
Title Plumas County Surveyor
County Surveyor's Comment _____



CORNER RECORD

Document Number: 281
 County of: Plumas
 City of: TSN RCE 27 TR 17

COORDINATES (Optional) _____

CORNER TYPE _____

Control

Priority

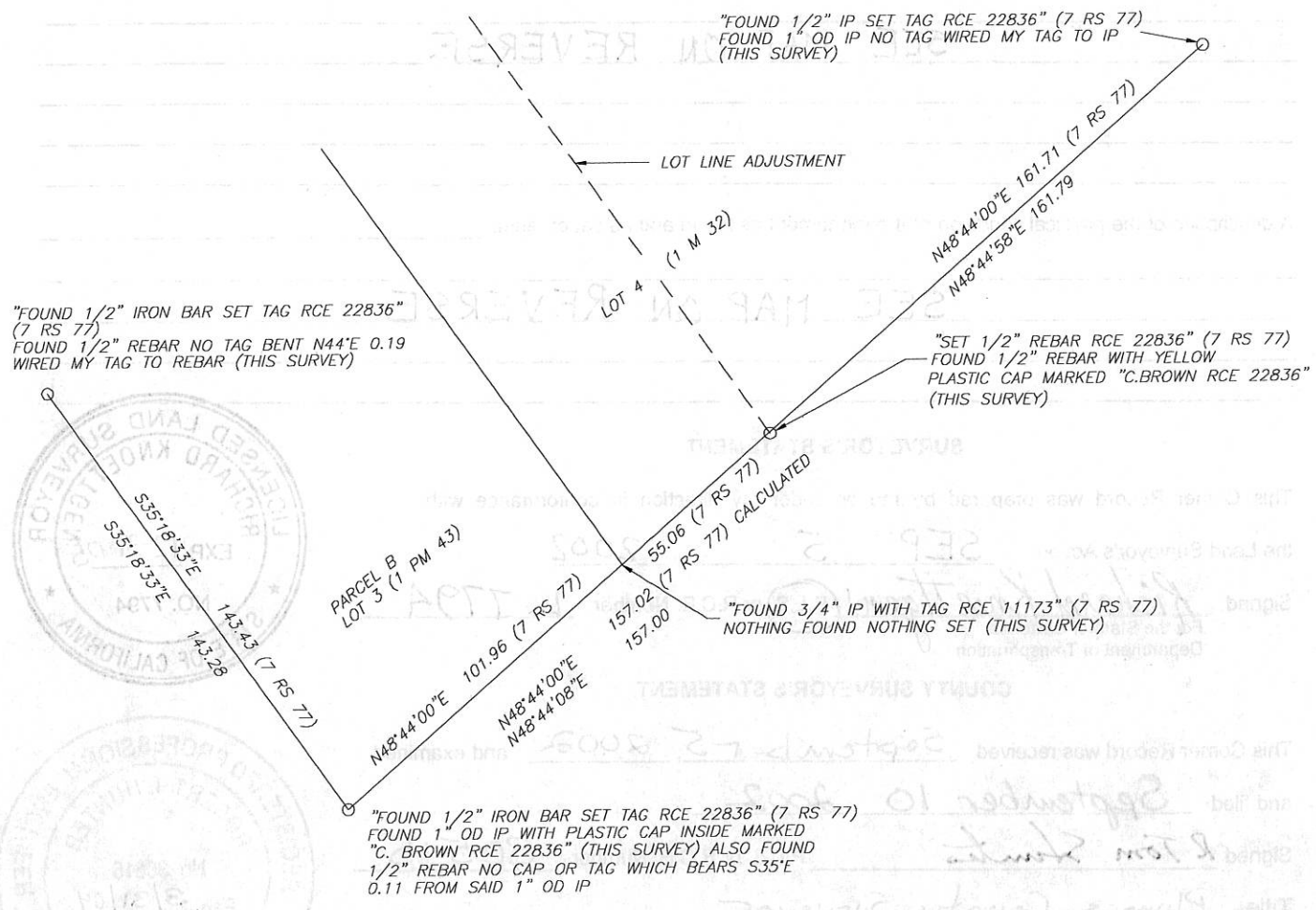
Other

SCALE

1 INCH = 50 FEET

0 1 2

0 50 100



NOTE
 MY TAG IS A 1 1/2" DIAMETER STEEL WASHER STAMPED
 "RICHARD KNOETTGEN L 7794"