

CORNER RECORD

COUNTY OF Plumas T. 28 N R. 8 E Mount Diablo MERIDIAN CALIFORNIA

CORNER TYPE: GOV'T CORNER MEANDER RANCHO CONTROL OTHER
CORNER IDENTIFICATION - DATE OF VISIT July 11 20 02



approximate location

CORNER - LEFT AS FOUND FOUND AND TAGGED REESTABLISHED OBLITERATED CORNER REBUILT

PHYSICAL DESCRIPTION OF CORNER FOUND: EVIDENCE AND METHOD USED TO IDENTIFY OR REESTABLISH

Original subdivision corners were not found. Used existing found monuments to re-establish lot corners.

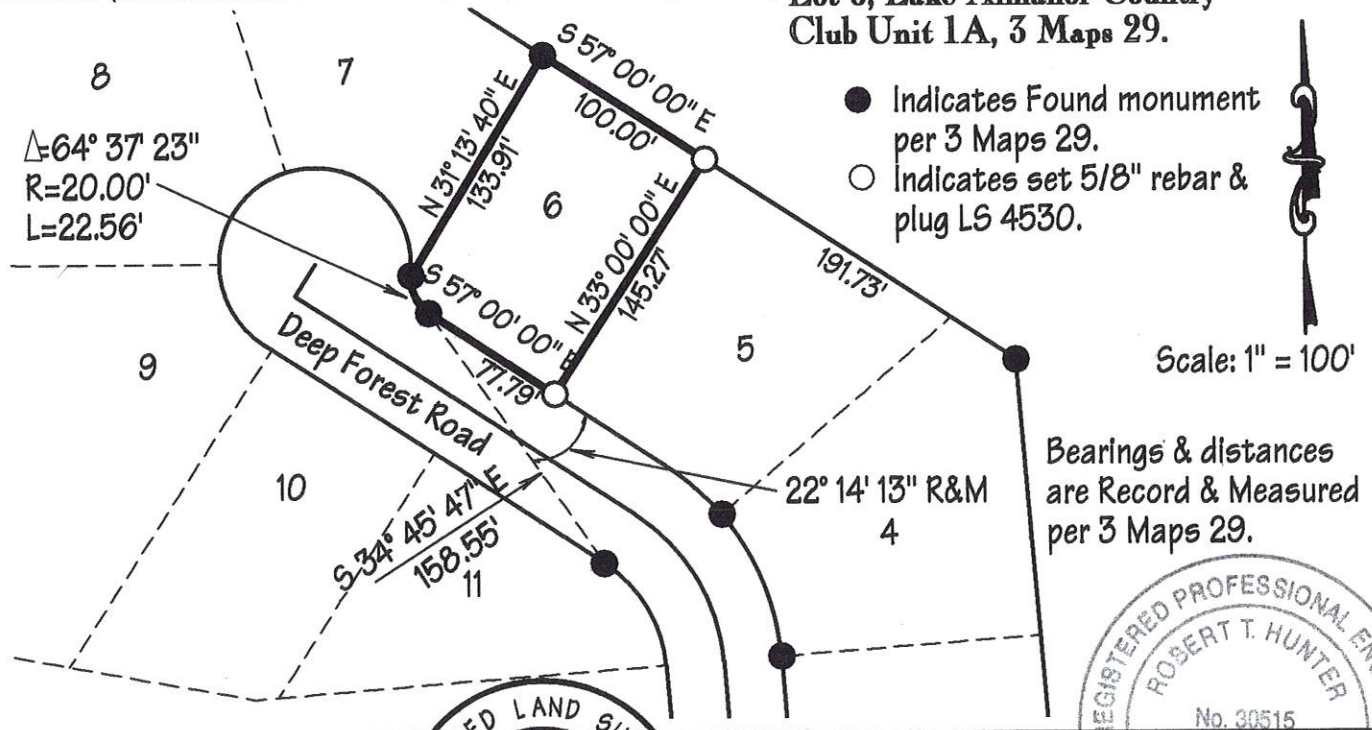
PHYSICAL DESCRIPTION OF MONUMENTS REBUILT OR PERPETUATED

Set 5/8" rebar and plastic plug stamped LS 4530.

CALIFORNIA COORDINATE SYSTEM ORDER: FIRST SECOND THIRD
STATIONS USED: NGS (USC & GS) STATE COUNTY OTHER STATION _____ STATION _____
ZONE _____ ELEVATION _____ NORTHINGS(Y) _____ EASTINGS (X) _____

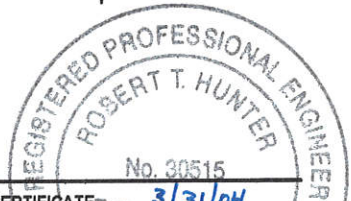
SKETCH: (Include reference tie or witness points, remarks and topo of area)

Lot 6, Lake Almanor Country Club Unit 1A, 3 Maps 29.



- Indicates Found monument per 3 Maps 29.
- Indicates set 5/8" rebar & plug LS 4530.

Bearings & distances are Record & Measured per 3 Maps 29.



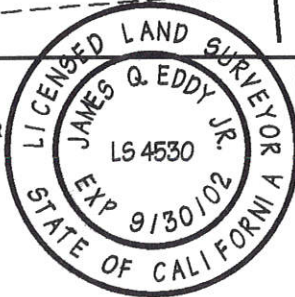
SURVEYOR'S CERTIFICATE

THIS CORNER RECORD WAS PREPARED BY ME OR UNDER MY DIRECTION IN CONFORMANCE WITH THE LAND SURVEYORS ACT ON July 11 20 02.

SIGNED James Q. Eddy Jr.

L.S. or R.C.E. No. LS 4530

SEAL



COUNTY SURVEYOR'S CERTIFICATE: Exp. 3/31/04

THE CORNER RECORD WAS RECEIVED August 29 20 02 AND EXAMINED AND FILED Sept 10 20 02

BY: R. Tom Spitzer TITLE: Plumas County Surveyor

DOCUMENT No. 222 STATEMENT ON BACK OF SHEET YES NO

CORNER RECORD

COUNTY OF Butte STATE OF California
 CORNER TYPE - GOVT CORNER RANCH OTHER
 CORNER IDENTIFICATION - DATE OF VISIT July 11, 2002
 MOUNT MERIDIAN Mount Diablo CALIFORNIA

approximate location

CORNER - TEST AS FOUND FOUND AND TAGGED RE-ESTABLISHED OR RE-TERMINATED CORNER RESULT

PHYSICAL DESCRIPTION OF CORNER FOUND, EVIDENCE AND METHOD USED TO IDENTIFY OR RE-ESTABLISH

Original subdivision corners were not found. Lead existing found monuments to re-establish for corners.

PHYSICAL DESCRIPTION OF MONUMENTS RESULT OR OBSERVATIONS

Set 518" rebar and plastic pins stamped LS 4530

DATE OF VISIT July 11, 2002 TIME 10:00 AM
 SURVEYOR'S NAME Robert T. Hunter FIRM Robert T. Hunter & Associates, Inc.
 COUNTY SURVEYOR'S CERTIFICATE NO. 313104 EXPIRES 07/11/05
 STATE OF CALIFORNIA

SCALE: 1" = 100'

● indicates found monument per 3 Maps 28
 ○ indicates set 518" rebar & pins LS 4530

Scale: 1" = 100'

Beings & distances -
 site record & measured
 per 3 Maps 28

22.14' 13" R&M



SURVEYOR'S CERTIFICATE
 THE CORNER RECORD WAS PREPARED BY ME OR UNDER MY DIRECT SUPERVISION AND I AM A LICENSED SURVEYOR IN THE STATE OF CALIFORNIA.
 SIGNED: James O. Eddy DATE: July 11, 2002
 LICENSE NO. LS 4530

STATEMENT ON BACK OF SHEET
 DOCUMENT NO. 222
 DATE July 11, 2002