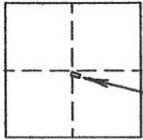


CORNER RECORD

COUNTY OF Plumas T. 28 N R. 8 E Mount Diablo MERIDIAN CALIFORNIA
CORNER TYPE: GOV'T CORNER MEANDER RANCHO CONTROL OTHER
CORNER IDENTIFICATION - DATE OF VISIT July 25, 20 02



Section 21
Approximate location

CORNER - LEFT AS FOUND FOUND AND TAGGED REESTABLISHED OBLITERATED CORNER REBUILT

PHYSICAL DESCRIPTION OF CORNER FOUND: EVIDENCE AND METHOD USED TO IDENTIFY OR REESTABLISH

Set NE corner of Lot 115, 1 RM 12 per dimensions shown on 7 RS 72.

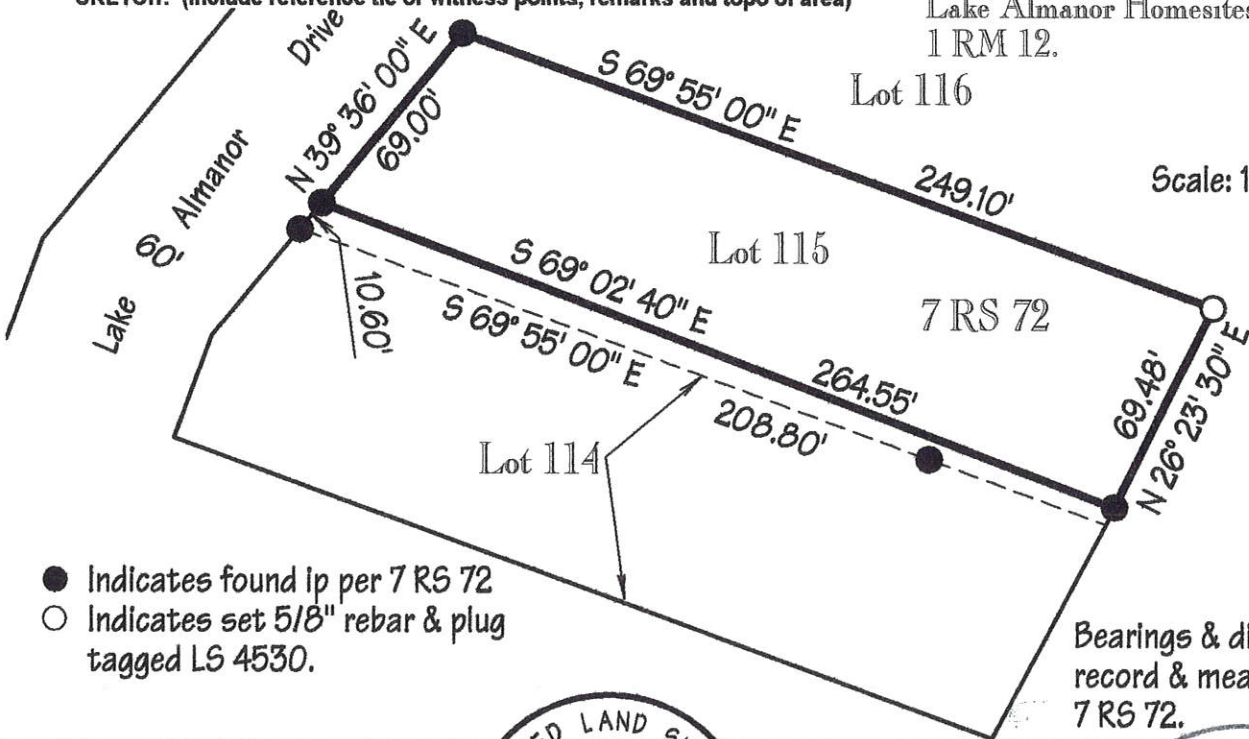
PHYSICAL DESCRIPTION OF MONUMENTS REBUILT OR PERPETUATED

Set 5/8" rebar and plastic plug stamped LS 4530.

CALIFORNIA COORDINATE SYSTEM ORDER: FIRST SECOND THIRD
STATIONS USED: NGS (USC & GS) COUNTY OTHER STATION _____ STATION _____
ZONE _____ ELEVATION _____ NORTHINGS(Y) _____ EASTINGS (X) _____

SKETCH: (Include reference tie or witness points, remarks and topo of area)

Lake Almanor Homesites Unit 1
1 RM 12.



- Indicates found lp per 7 RS 72
- Indicates set 5/8" rebar & plug tagged LS 4530.

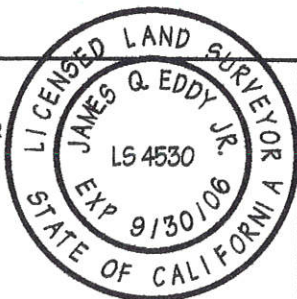
Bearings & distances are record & measured per 7 RS 72.

SURVEYOR'S CERTIFICATE

THIS CORNER RECORD WAS PREPARED BY ME OR UNDER MY DIRECTION IN CONFORMANCE WITH THE LAND SURVEYORS ACT ON July 25, 20 02.

SIGNED James Q. Eddy Jr
L.S. or R.C.E. No. LS 4530

SEAL

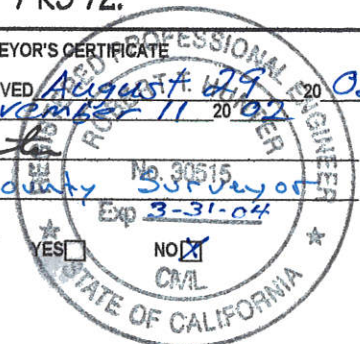


COUNTY SURVEYOR'S CERTIFICATE

THE CORNER RECORD WAS RECEIVED August 29, 20 02 AND EXAMINED AND FILED November 11, 20 02

BY: R. Tom Hamilton
TITLE: Plumas County Surveyor

DOCUMENT No. 223
STATEMENT ON BACK OF SHEET



223

CORNER RECORD

County of Plumas Mount Diablo
 BE
 28N
 32E
 SECTION 21
 APPROXIMATE LOCATION

PHYSICAL DESCRIPTION OF CORNER FOUND: EVIDENCE AND METHOD USED TO VERIFY OR RE-ESTABLISH
 CORNER - LIST AS FOUND FOUND AND TAGGED RE-ESTABLISHED OR RE-PLACED CORNER RESULT

Set NE corner of Lot 18, 1 RM 18 per dimensions shown on YRS 73

PHYSICAL DESCRIPTION OF MONUMENT RESULT OR RE-ESTABLISH

Set 5/8" rebar and plastic plug stamped LS 4530

DATE OF SURVEY June 20, 2002
 COUNTY SURVEYOR'S OFFICE Plumas
 SURVEYOR'S ACT LS 4530



● indicates found to per YRS 73
 ○ indicates set 5/8" rebar & plug stamped LS 4530

Bearings & distance are record & measured per YRS 73

COUNTY SURVEYOR'S OFFICE
 THE CORNER RECORD WAS RECEIVED AND EXAMINED AND FILED
 BY Tom
 DATE June 20, 2002
 DOCUMENT NO. 223
 STATEMENT OF EACH SHEET



SURVEYOR'S CERTIFICATE
 THIS CORNER RECORD WAS PREPARED BY ME OR UNDER MY DIRECTION IN CONFORMANCE WITH THE LAND SURVEYORS ACT
 SIGNED James G. Eddy
 LICENSE NO. 124530
 DATE June 20, 2002