

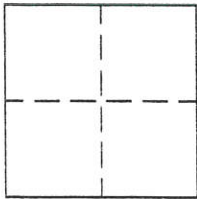
CORNER RECORD

Document Number 224

Section 12, T. 22 N., R. 12 E., M.D.M.

County of Plumas, California

Brief Legal Description Parcel 4, 5 PM 41 and Parcel 1, 8 PM 48



CORNER TYPE

Government Corner  Control   
Meander  Property   
Rancho  Other   
Date of Survey May 4, 2002

COORDINATES (Optional)

N. \_\_\_\_\_  
E. \_\_\_\_\_  
Zone \_\_\_\_\_ Datum \_\_\_\_\_  
Elev. \_\_\_\_\_

Corner— Left as found  Found and tagged  Established  Reestablished  Rebuilt

Identification and type of corner found: Evidence used to identify or procedure used to establish or reestablish the corner:  
Found 1/2 rebar with Plastic Cap as shown on attached sketch from which I reestablished missing corner.

A description of the physical condition of the monument as found and as set or reset: From found corners as shown on attached sketch I set 5/8" rebar with Aluminum Cap stamped LS 5620.

SURVEYOR'S STATEMENT

This Corner Record was prepared by me or under my direction in conformance with the Land Surveyors' Act on May 20, 2002.

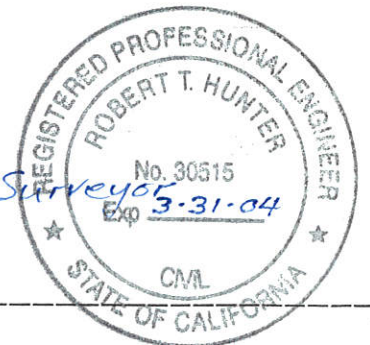
Signed John L. Owen L.S. 5620  
John L. Owen



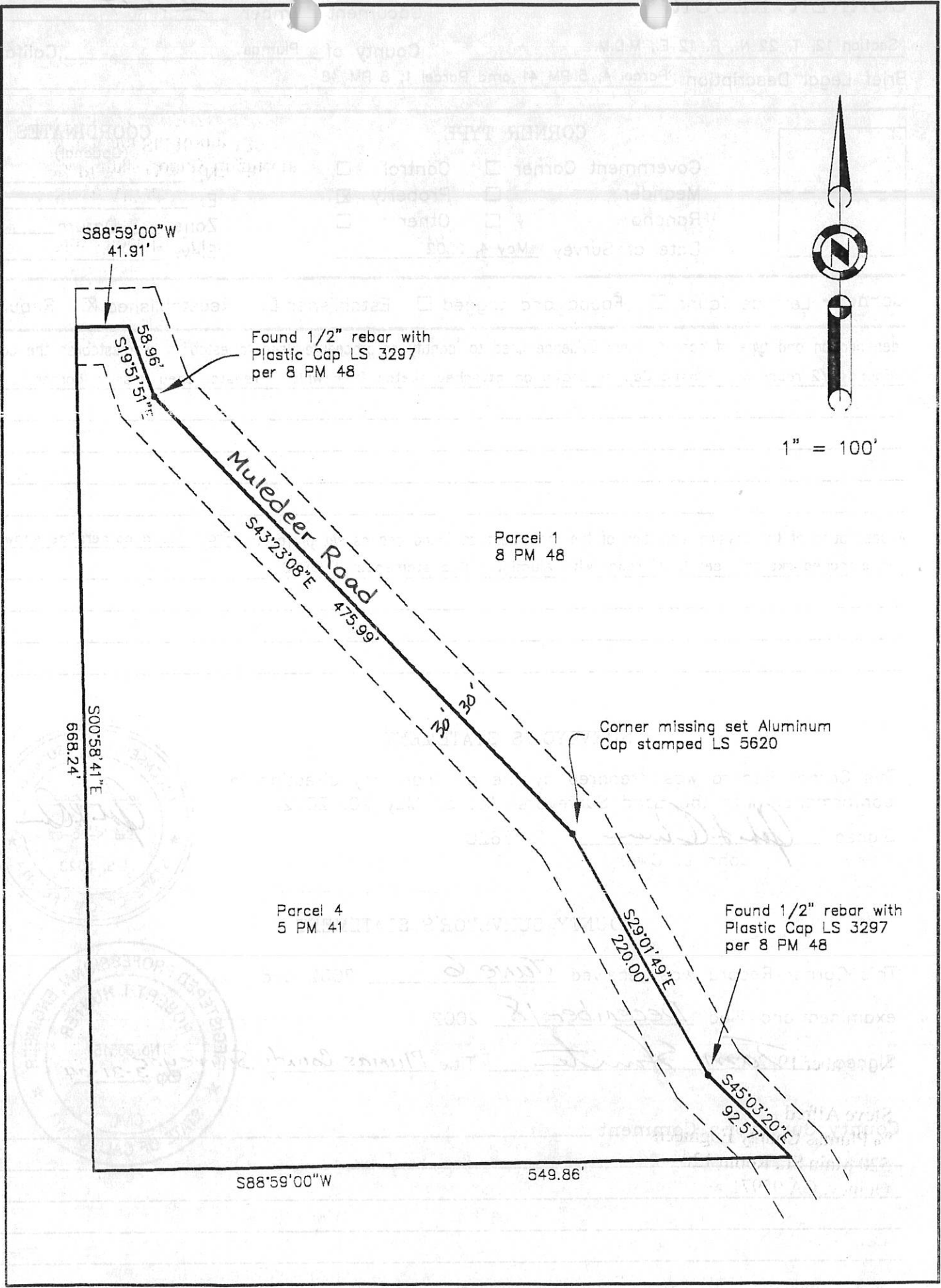
COUNTY SURVEYOR'S STATEMENT

This Corner Record was received June 6 2002 and examined and filed December 18 2002.

Signed Tom Hunter Title Plumas County Surveyor



County Surveyor's Comment \_\_\_\_\_



1" = 100'

Found 1/2" rebar with Plastic Cap LS 3297 per 8 PM 48

Parcel 1  
8 PM 48

Corner missing set Aluminum Cap stamped LS 5620

Parcel 4  
5 PM 41

Found 1/2" rebar with Plastic Cap LS 3297 per 8 PM 48