

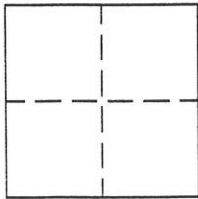
CORNER RECORD

Document Number 225

Sec.19, T.22N.R.13E. M.D.M.

County of Plumas, California

Brief Legal Description Parcel 3 & Designated Remainder, 10 PM 77



CORNER TYPE

Government Corner  Control   
Meander  Property   
Rancho  Other   
Date of Survey Nov. 2002

COORDINATES (Optional)

N. \_\_\_\_\_  
E. \_\_\_\_\_  
Zone \_\_\_\_\_ Datum \_\_\_\_\_  
Elev. \_\_\_\_\_

Corner- Left as found  Found and tagged  Established  Reestablished  Rebuilt

Identification and type of corner found: Evidence used to identify or procedure used to establish or reestablish the corner:  
Monuments found as indicated were in good condition.

A description of the physical condition of the monument as found and as set or reset:  
Set 5/8" rebar capped L.S.2843 at locations shown on attached drawing.

SURVEYOR'S STATEMENT

This Corner Record was prepared by me or under my direction in conformance with the Land Surveyors' Act on Nov. 2002.

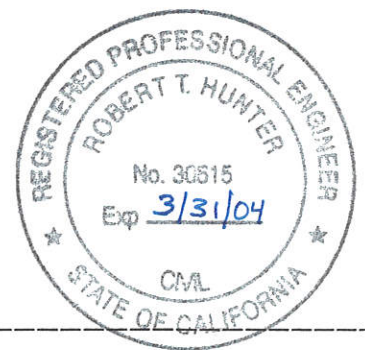
Signed John W. Hamby L.S. 2843  
John W. Hamby



COUNTY SURVEYOR'S STATEMENT

This Corner Record was received 12-5 2002 and examined and filed December, 26 2002.

Signed R. Tom Hunter Title P.C. Surveyor

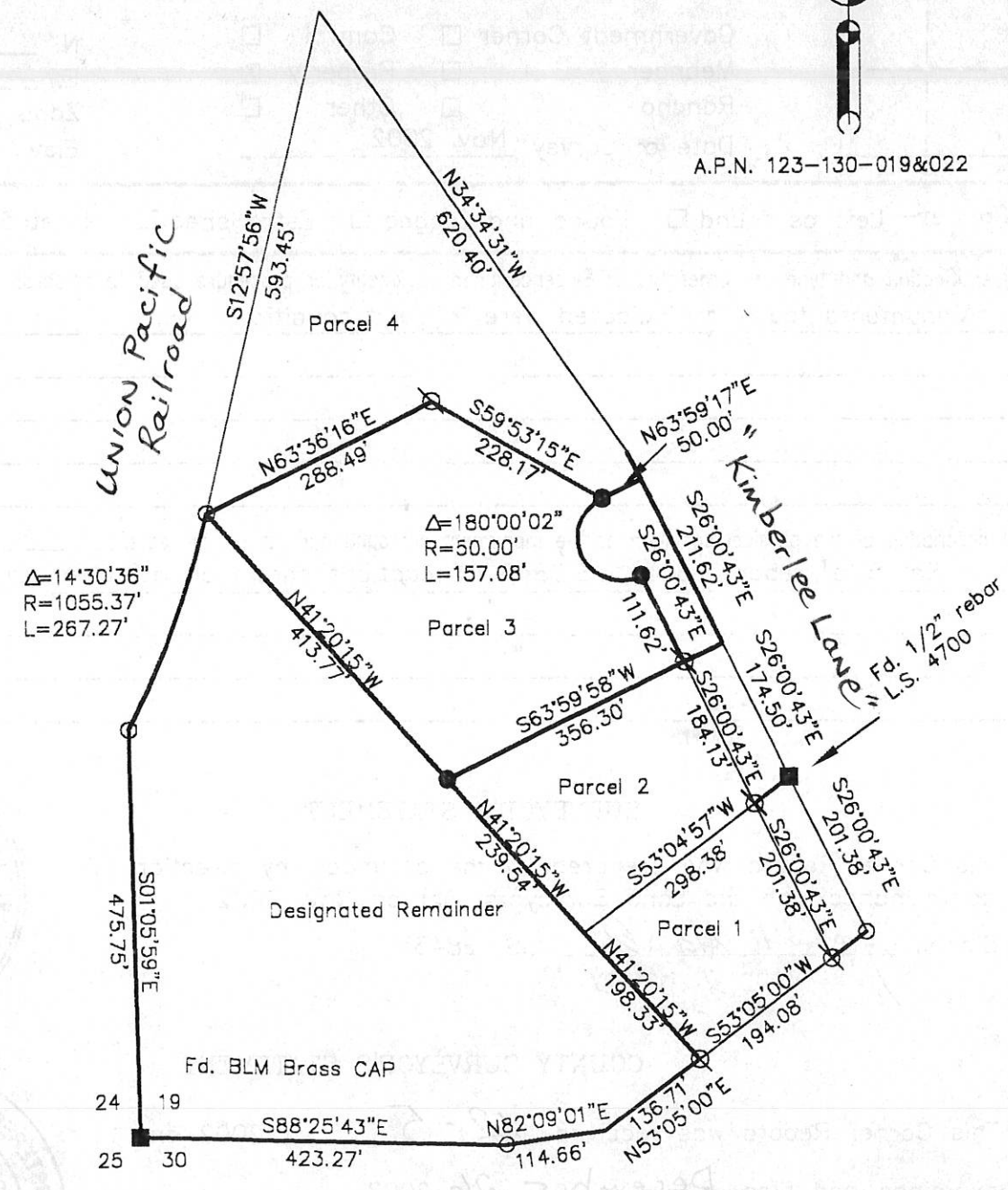


County Surveyor's Comment \_\_\_\_\_

- FOUND point as described
- SET 5/8" Rebar & Plastic Cap LS 2843
- ⊗ FOUND 1/2" REBAR, RCE 22836
- FOUND 1/2" REBAR, LS 3297



A.P.N. 123-130-019&022



PARCEL 3 & DESIG. REMAINDER  
 10 PM 77  
 Por. Sec.19, T.22N.R.13E., M.D.M.  
 PLUMAS COUNTY CALIF.  
 Nov. 2002 Scale 1"=200'

Hamby Surveying Inc.  
 P.O. Box 1209  
 Portola, CA 96122  
 (530) 832-5571

02254