

CORNER RECORD

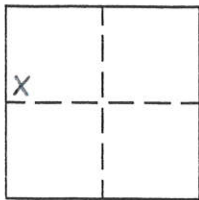
Section 1

T22N R13E MDM CITY OF PORTOLA

Document Number 226

County of PLUMAS, California

Brief Legal Description LOTS 15 AND 16 OF RIDGEWOOD SUBDIVISION UNIT NO. 1, 5 M 46



CORNER TYPE

Government Corner Control
Meander Property
Rancho Other
Date of Survey JANUARY 16, 2003

COORDINATES (Optional)

N. _____
E. _____
Zone _____ Datum _____
Elev. _____

Corner— Left as found Found and tagged Established Reestablished Rebuilt

Identification and type of corner found: Evidence used to identify or procedure used to establish or reestablish the corner:
Found corners as shown in sketch in record position, which I used to reestablish the record position of the missing corners of Lots 15 and 16.

A description of the physical condition of the monument as found and as set or reset: Set most Northeasterly corner at the end of the curve return and the most Northerly corner of Lot 16 as shown on sketch.

SURVEYOR'S STATEMENT

This Corner Record was prepared by me or under my direction in conformance with the Land Surveyors' Act on January 16, 2003.

Signed John W. Hamby L.S. 2843
John W. Hamby



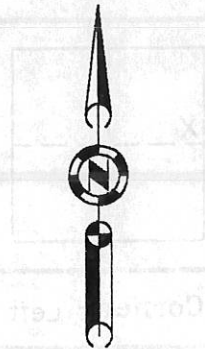
COUNTY SURVEYOR'S STATEMENT

This Corner Record was received January 22 2003 and examined and filed January 29 2003.

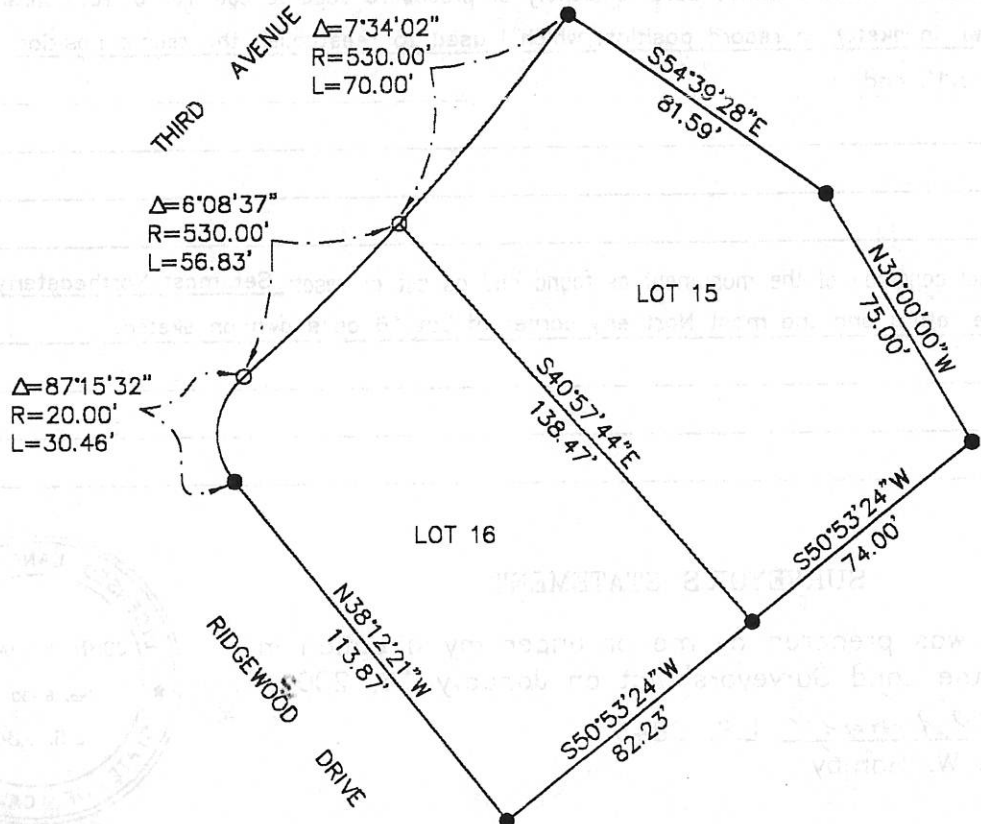
Signed R Tom Hunter Title Plumas County Surveyor



County Surveyor's Comment _____



1" = 50'



$\Delta=87^{\circ}15'32''$
 $R=20.00'$
 $L=30.46'$

$\Delta=6^{\circ}08'37''$
 $R=530.00'$
 $L=56.83'$

$\Delta=7^{\circ}34'02''$
 $R=530.00'$
 $L=70.00'$

- DENOTES FOUND PLASTIC CAP LS 3297
- DENOTES SET A 5/8" REBAR WITH ALUM. CAP LS 2843

Hamby Surveying Inc.
 P.O. Box 1209
 Portola, CA 96122
 (530) 832-5571