

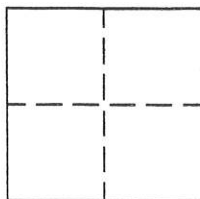
CORNER RECORD

Document Number #227

Sec. 10, T.22N.R.12E. M.D.M.

County of Plumas, California

Brief Legal Description Parcel 1 5 PM 84



CORNER TYPE

Government Corner [] Control []
Meander [] Property [x]
Rancho [] Other []
Date of Survey Feb. 10, 2003

COORDINATES (Optional)

N.
E.
Zone Datum
Elev.

Corner- Left as found [] Found and tagged [] Established [] Reestablished [x] Rebuilt []

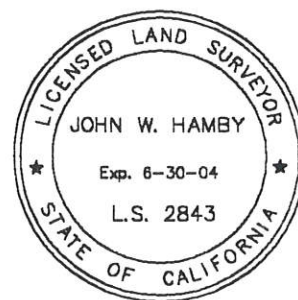
Identification and type of corner found: Evidence used to identify or procedure used to establish or reestablish the corner:
Found points as indicated on attached sketch in good condition. Set S.E. corner in original position.

A description of the physical condition of the monument as found and as set or reset: Found 3 corners as shown on Parcel Map, except the Northwest corner which had the tag missing.

SURVEYOR'S STATEMENT

This Corner Record was prepared by me or under my direction in conformance with the Land Surveyors' Act on Feb. 10, 2003.

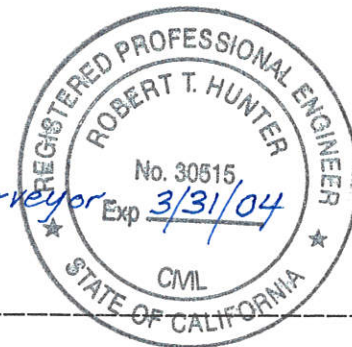
Signed John W. Hamby L.S. 2843
John W. Hamby



COUNTY SURVEYOR'S STATEMENT

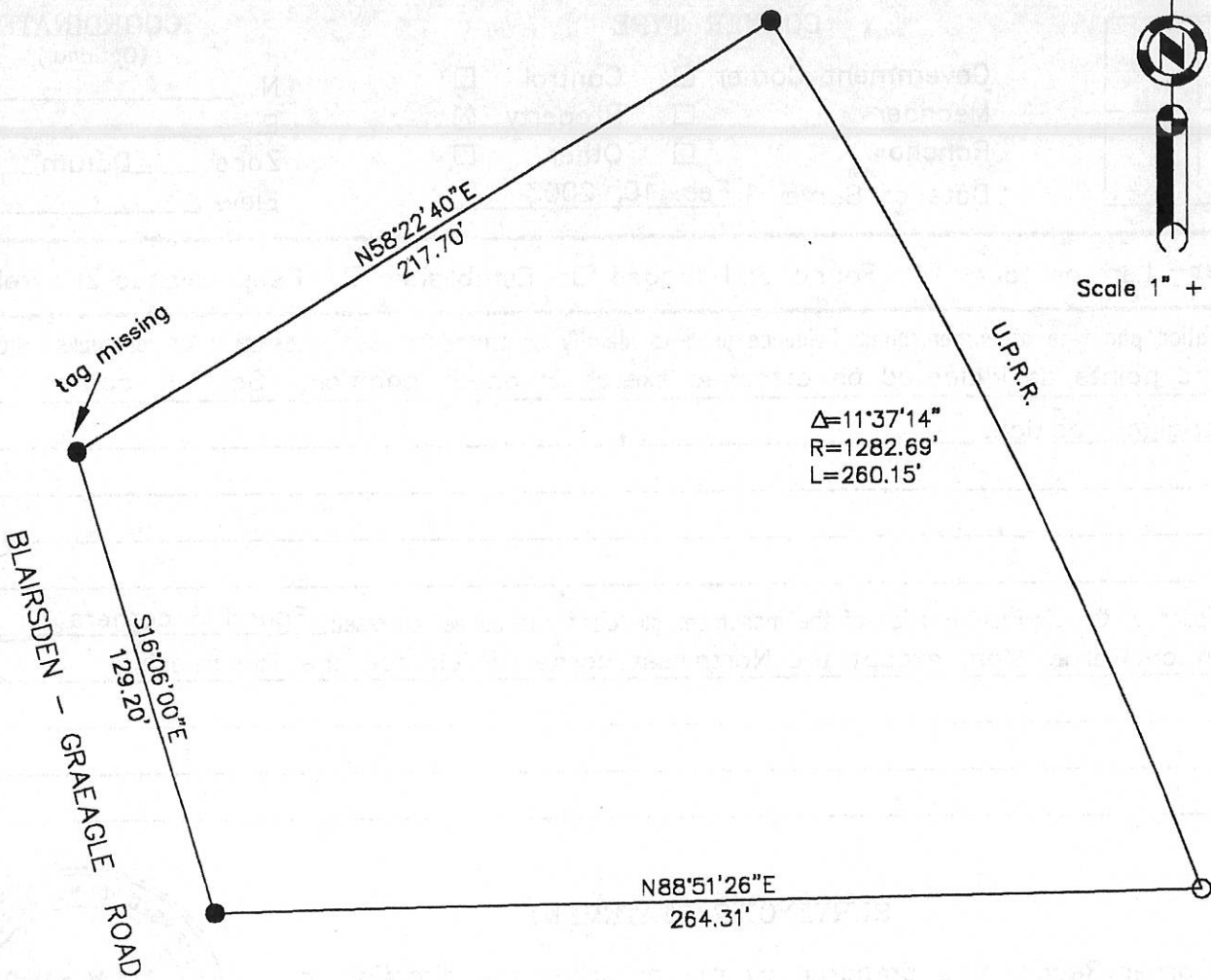
This Corner Record was received February 19 2003 and examined and filed March 6 2003.

Signed R. Tom Hunter Title Plumas County Surveyor



County Surveyor's Comment

- FOUND 3/4" iron pipe LS 3297 or as indicated
- SET 5/8" Rebar & Aluminum Cap LS 2843



Scale 1" = 50'

$\Delta=11^{\circ}37'14''$
 $R=1282.69'$
 $L=260.15'$

PARCEL 1
 5 PM 84

Section 10, T.22N.R.12E
 M.D.M.
 Plumas County, Ca
 Scale 1" = 50' Feb. 2003

Hamby Surveying Inc.
 P.O. Box 1209
 Portola, CA 96122
 (530) 832-5571