

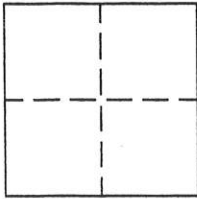
CORNER RECORD

Document Number 229

SECTION 10, T.22N., R.13E.

County of PLUMAS, California

Brief Legal Description LOT 29 OF THE RESUBDIVISION OF IRON HORSE RANCHO SUBDIVISION, FOUND IN BOOK 3 OF MAPS, PAGE 111.



CORNER TYPE

Government Corner  Control   
Meander  Property   
Rancho  Other   
Date of Survey 3-7-03

COORDINATES (Optional)

N. \_\_\_\_\_  
E. \_\_\_\_\_  
Zone \_\_\_\_\_ Datum \_\_\_\_\_  
Elev. \_\_\_\_\_

Corner- Left as found  Found and tagged  Established  Reestablished  Rebuilt

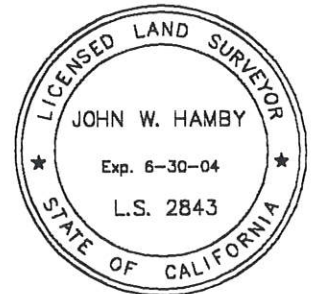
Identification and type of corner found: Evidence used to identify or procedure used to establish or reestablish the corner:  
found monuments as described on sketch and set a 5/8" rebar with aluminum cap stamped LS 2843 at a proportionate distance between found monuments on easterly property line.

A description of the physical condition of the monument as found and as set or reset: From found corners as shown on attached sketch, I set a 5/8" rebar with aluminum cap stamped LS 2843.

SURVEYOR'S STATEMENT

This Corner Record was prepared by me or under my direction in conformance with the Land Surveyors' Act on March 7, 2003.

Signed John W Hamby L.S. 2843  
John W. Hamby



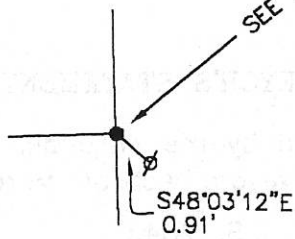
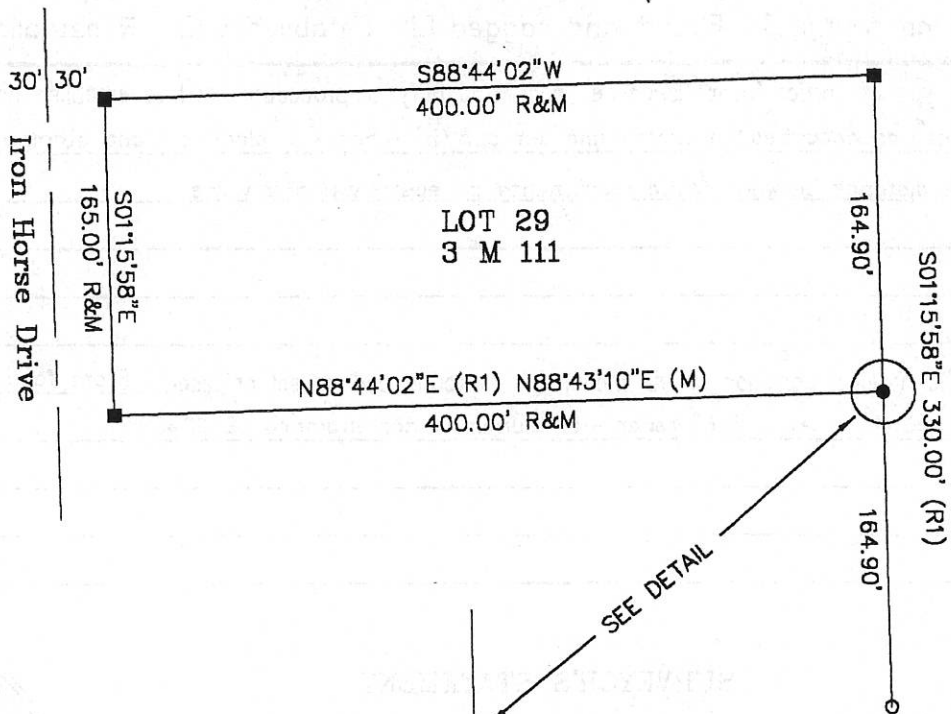
COUNTY SURVEYOR'S STATEMENT

This Corner Record was received 3-13 2003 and examined and filed 3-18 2003.

Signed R Tom Hunter Title County Surveyor



County Surveyor's Comment \_\_\_\_\_



1" = 100'

**LEGEND**

- FOUND Bolt per 3 M 111
- SET 5/8" Rebar & Plastic Cap LS 2843
- FOUND Rebar with Plastic Cap LS 2843
- ∅ FOUND 1/2" rebar ( no markings or reference)
- (R1) Record per 3 M 111

Hamby Surveying Inc.  
 P.O. Box 1209  
 Portola, CA 96122  
 (530) 832-5571

03040