

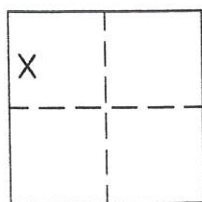
CORNER RECORD

Document Number 231

NW1/4 SECTION 1, T.22 N., R.13 E., M.D.M.

County of PLUMAS, California

Brief Legal Description LOT 7B OF THE RIDGEWOOD SUBDIVISION UNIT No. 1, AT 5 M 46.



CORNER TYPE

Government Corner Control
Meander Property
Rancho Other
Date of Survey march 29, 2003

COORDINATES (Optional)

N. _____
E. _____
Zone _____ Datum _____
Elev. _____

Corner- Left as found Found and tagged Established Reestablished Rebuilt

Identification and type of corner found: Evidence used to identify or procedure used to establish or reestablish the corner:

Found points as shown and described on attached sketch and as shown on 5 M 46.

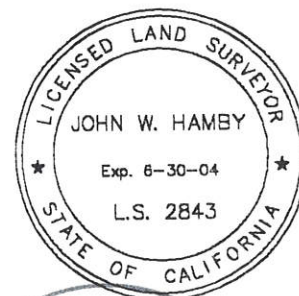
A description of the physical condition of the monument as found and as set or reset:

Found points as described and in good condition. Points set as shown on attached sketch.

SURVEYOR'S STATEMENT

This Corner Record was prepared by me or under my direction in conformance with the Land Surveyors' Act on April 1, 2003.

Signed John W. Hamby L.S. 2843
John W. Hamby



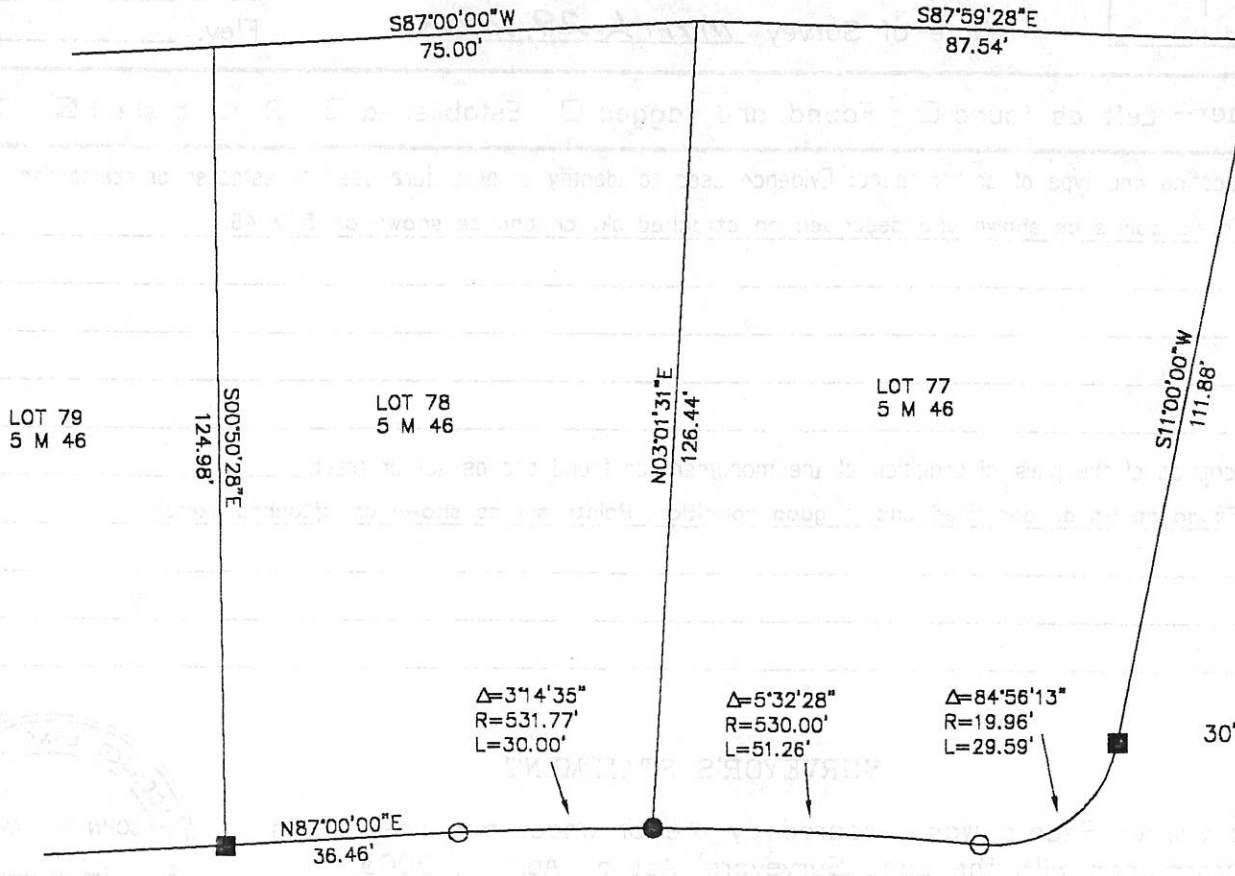
COUNTY SURVEYOR'S STATEMENT

This Corner Record was received 4-16 2003 and examined and filed 4-28 2003.

Signed R Tom Hunter Title Plumas County Surveyor



County Surveyor's Comment _____



LEGEND

- FOUND 1/2" Rebar & Plastic Cap LS 3297
- SET 5/8" Rebar & Aluminum Cap LS 2843
- Nothing found or set

Hamby Surveying Inc.
 P.O. Box 1209
 Portola, CA 96122
 (530) 832-5571