

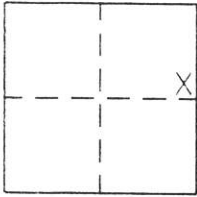
CORNER RECORD

Document Number 232

NE1/4 SECTION 17, T 22 N., R.13 E., M.D.M.

County of PLUMAS, California

Brief Legal Description PARCEL 2 OF 12 RS 108 AND PARCEL 3 OF 1 PM 78



CORNER TYPE

Government Corner Control
 Meander Property
 Rancho Other
 Date of Survey FEB. 14, 2003.

COORDINATES (Optional)

N. _____
 E. _____
 Zone _____ Datum _____
 Elev. _____

Corner- Left as found Found and tagged Established Reestablished Rebuilt

Identification and type of corner found: Evidence used to identify or procedure used to establish or reestablish the corner:

Found points as shown and described on attached sketch and as shown on 1 PM 78 AND 12 RS 108.

A description of the physical condition of the monument as found and as set or reset:

Found points as described and in good condition. Points set as shown on attached sketch, as witness corner to actual property corner, which falls in river.

SURVEYOR'S STATEMENT

This Corner Record was prepared by me or under my direction in conformance with the Land Surveyors' Act on April 2, 2003.

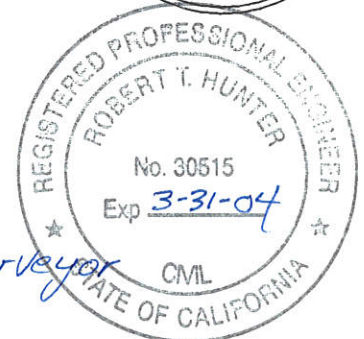
Signed John W. Hamby L.S. 2843
John W. Hamby



COUNTY SURVEYOR'S STATEMENT

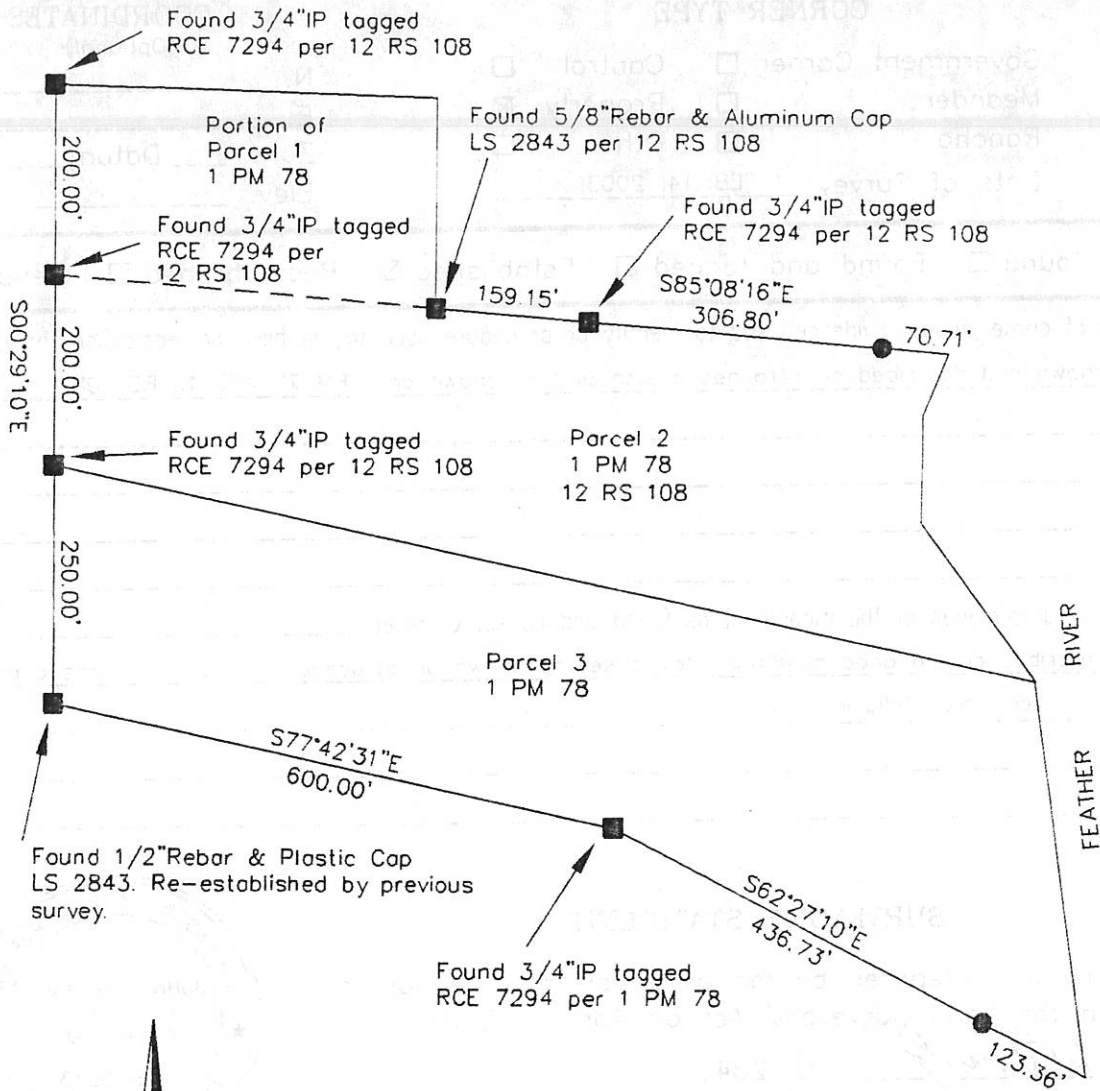
This Corner Record was received 4-29 2003 and examined and filed May 6 2003.

Signed R. Tom Hunter Title Plumas County Surveyor



County Surveyor's Comment _____

NOTE: ALL DISTANCES ARE RECORD PER 1 PM 78
AND 12 RS 108



LEGEND

- FOUND point as described
- SET 5/8" Rebar & Aluminum Cap LS 2843 as Witness Corner, (Actual Corner falls in River)

Hamby Surveying Inc.
P.O. Box 1209
Portola, CA 96122
(530) 832-5571