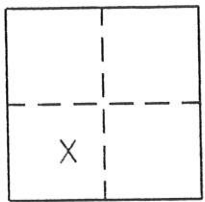


CORNER RECORD

Document Number 233

SW 1/4 SECTION 35, T.23 N., R.13 E., M.D.M. County of PLUMAS, California

Brief Legal Description LOT 1, BLOCK 4 OF THE MAP OF WEST PORTOLA RECORDED IN BOOK A PAGE 26.



CORNER TYPE

Government Corner  Control   
Meander  Property   
Rancho  Other   
Date of Survey APRIL 24, 2003

COORDINATES (Optional)

N. \_\_\_\_\_  
E. \_\_\_\_\_  
Zone \_\_\_\_\_ Datum \_\_\_\_\_  
Elev. \_\_\_\_\_

Corner- Left as found  Found and tagged  Established  Reestablished  Rebuilt

Identification and type of corner found: Evidence used to identify or procedure used to establish or reestablish the corner:  
FOUND POINTS AS SHOWN AND DESCRIBED ON ATTACHED SKETCH AND AS SHOWN ON 4 RS 143.

A description of the physical condition of the monument as found and as set or reset:  
FOUND POINTS AS DESCRIBED AND IN GOOD CONDITION. POINTS SET AS SHOWN ON ATTACHED SKETCH.

SURVEYOR'S STATEMENT

This Corner Record was prepared by me or under my direction in conformance with the Land Surveyors' Act on April 28, 2003.

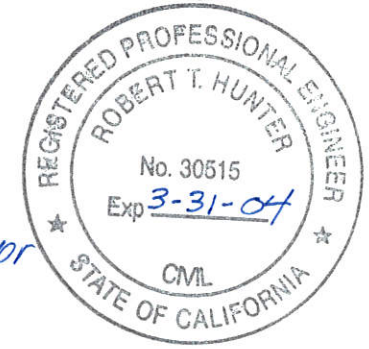
Signed John W. Hamby L.S. 2843  
John W. Hamby



COUNTY SURVEYOR'S STATEMENT

This Corner Record was received 4-29 2003 and examined and filed May 6 2003.

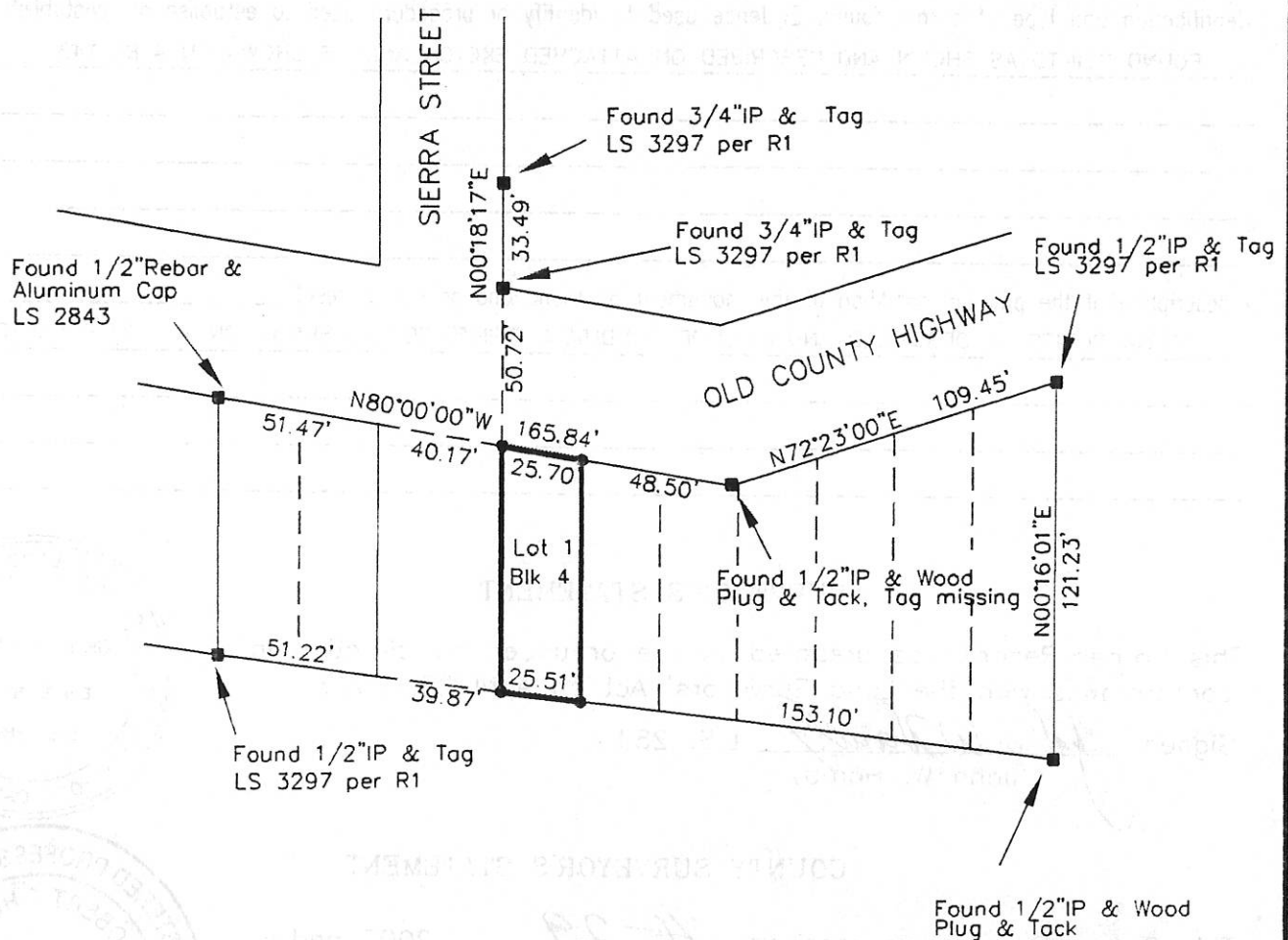
Signed R. Tom Hunt Title Plumas County Surveyor



County Surveyor's Comment \_\_\_\_\_



1" = 60'



### LEGEND

- FOUND point as described
- SET 5/8" Rebar & Aluminum Cap LS 2843
- (R1) RECORD per 4 RS 143

Hamby Surveying Inc.  
 P.O. Box 1209  
 Portola, CA 96122  
 (530) 832-5571