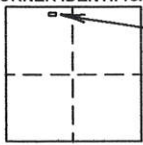


CORNER RECORD

COUNTY OF Plumas T. 28 N R. 7 E Mount Diablo MERIDIAN CALIFORNIA

CORNER TYPE: GOV'T CORNER MEANDER RANCHO CONTROL OTHER
CORNER IDENTIFICATION - DATE OF VISIT December 12, 20 02



approximate location
Section 8

CORNER - LEFT AS FOUND FOUND AND TAGGED REESTABLISHED OBLITERATED CORNER REBUILT

PHYSICAL DESCRIPTION OF CORNER FOUND: EVIDENCE AND METHOD USED TO IDENTIFY OR REESTABLISH

The corners of Lot 11 were not found. Corners found at other lot corners in Block 6 were used to reestablish positions.

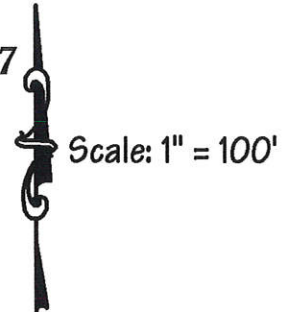
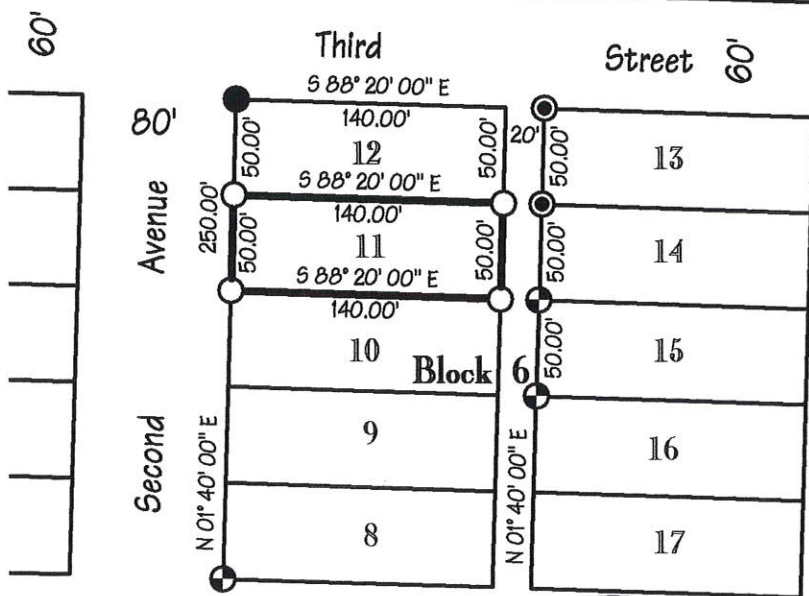
PHYSICAL DESCRIPTION OF MONUMENTS REBUILT OR PERPETUATED

Set 5/8" rebar and plastic plug stamped LS 4530.

CALIFORNIA COORDINATE SYSTEM ORDER: FIRST SECOND THIRD
STATIONS USED: NGS (USC & GS) STATE COUNTY OTHER STATION _____ EASTINGS (X) _____
ZONE _____ ELEVATION _____ NORTHINGS(Y) _____

SKETCH: (Include reference tie or witness points, remarks and topo of area)

Mount Lassen View Addition to Chester R.M. Book A, Page 7



Bearings and distances are record and measured per R.M. Bk A, Pg 7

- ⊕ Indicates found monument per 4 PM 116.
- ⊙ Indicates found 1/2" rebar & plug LS 4647.
- Indicates found 1 1/2" IP no tag.
- Indicates set 5/8" rebar & plug LS 4530.

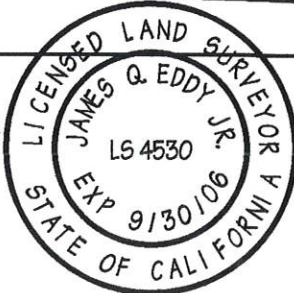
4 PM 116

SURVEYOR'S CERTIFICATE

THIS CORNER RECORD WAS PREPARED BY ME OR UNDER MY DIRECTION IN CONFORMANCE WITH THE LAND SURVEYORS ACT ON December 12, 20 02.

SIGNED James Q. Eddy Jr
L.S. or R.C.E. No. L.S. 4530

SEAL



COUNTY SURVEYOR'S CERTIFICATE

THE CORNER RECORD WAS RECEIVED January 15, 20 03 AND EXAMINED AND FILED _____

BY: Robert T. Hunter No. 30515

TITLE: Plumas County Surveyor 3/31/04

DOCUMENT No. 234
STATEMENT ON BACK OF SHEET YES NO



Doc # 234

CORNER RECORD

County of Alameda Mount Diablo S&N 2E

Corner: Corner Corner Corner Corner

Approximate location: Section 5

PHYSICAL DESCRIPTION OF CORNER FOUND: EVIDENCE AND METHOD USED TO IDENTIFY OR REESTABLISH CORNER - (LEFT AS FOUND) FOUND AND TAGGED REESTABLISHED OR RECALCULATED CORNER RESULT

The corners of lot 11 were not found. Corners found at other lot corners in Block 8 were used to reestablish positions.

PHYSICAL DESCRIPTION OF CORNER FOUND: EVIDENCE AND METHOD USED TO IDENTIFY OR REESTABLISH CORNER - (LEFT AS FOUND) FOUND AND TAGGED REESTABLISHED OR RECALCULATED CORNER RESULT

Set 5/8" rebar and plastic plug stamped LS 4830.

Station: 100 State: CA Date: 12/15/03 Time: 4:00 PM

2-12-03 includes reference to other survey and plat in town.

Mount Diablo View Addition to Section 5, Block 8, T. 12 N., R. 2 E., S. 4 E.

Station 100



Bearings and distances are recorded and measured per R.M. B.A. 197.

- Indicates set 5/8" rebar & plug LS 4830.
- Indicates found 1 1/2" IP no tag.
- Indicates found 1 1/2" rebar & plug LS 4847.
- Indicates found monument per 4 PM 110.

STATEMENT ON BACK OF SHEET. YES NO

GOVERNMENT NO. 234

TITLE Mount Diablo View Addition to Section 5, Block 8, T. 12 N., R. 2 E., S. 4 E.

DATE 12/15/03

THE CORNER RECORD WAS RECEIVED, EXAMINED, AND FILED IN THE COUNTY SURVEY RECORDS ON 12/15/03



SEAL

DATE 12/15/03

FILED 12/15/03

THIS CORNER RECORD WAS TRIPARTITELY BY ME OR UNDER MY DIRECTION IN CONFORMANCE WITH THE LAND SURVEYING ACT OF December 15, 2002.

SURVEYOR'S CERTIFICATE