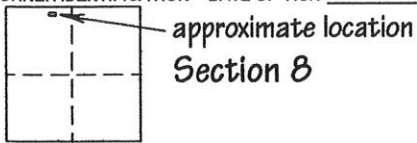


**CORNER RECORD**

COUNTY OF Plumas T. 28 N R. 7 E Mount Diablo MERIDIAN CALIFORNIA

CORNER TYPE: GOV'T CORNER  MEANDER  RANCHO  CONTROL  OTHER   
 CORNER IDENTIFICATION - DATE OF VISIT December 12, 20 02



CORNER - LEFT AS FOUND  FOUND AND TAGGED  REESTABLISHED OBLITERATED CORNER  REBUILT

PHYSICAL DESCRIPTION OF CORNER FOUND: EVIDENCE AND METHOD USED TO IDENTIFY OR REESTABLISH

The corners of Lot 11 were not found. Corners found at other lot corners in Block 6 were used to reestablish positions.

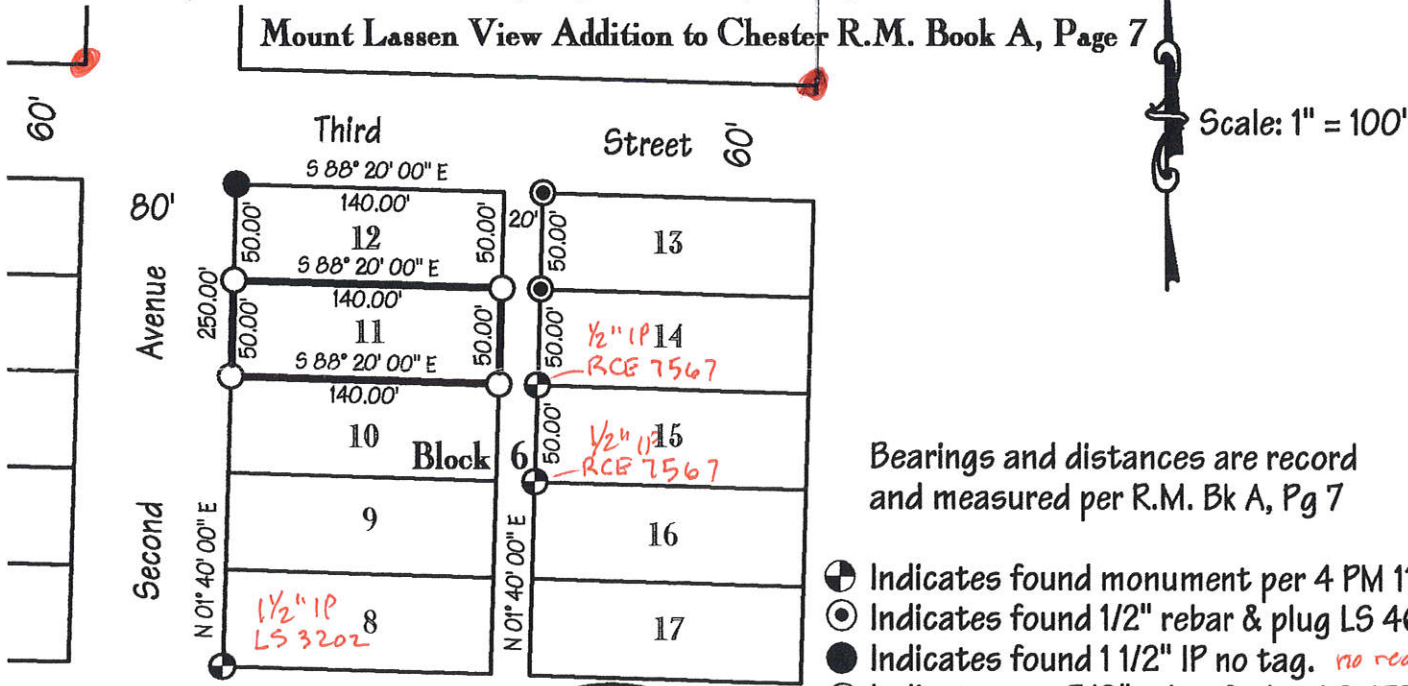
PHYSICAL DESCRIPTION OF MONUMENTS REBUILT OR PERPETUATED

Set 5/8" rebar and plastic plug stamped LS 4530.

*This Corner Record was Re-Submitted w/ additional information, several months after TH signed the Original*

CALIFORNIA COORDINATE SYSTEM ORDER: FIRST  SECOND  THIRD   
 STATIONS USED: NGS (USC & GS)  STATE  COUNTY  OTHER  STATION \_\_\_\_\_ STATION \_\_\_\_\_  
 ZONE \_\_\_\_\_ ELEVATION \_\_\_\_\_ NORTHINGS(Y) \_\_\_\_\_ EASTINGS (X) \_\_\_\_\_

SKETCH: (Include reference tie or witness points, remarks and topo of area)



Bearings and distances are record and measured per R.M. Bk A, Pg 7

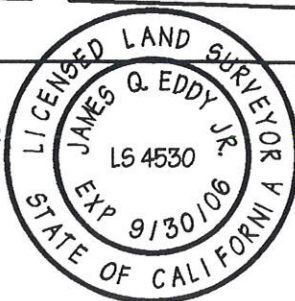
- ⊕ Indicates found monument per 4 PM 116.
- ⊙ Indicates found 1/2" rebar & plug LS 4647. *no tag*
- Indicates found 1 1/2" IP no tag. *no record*
- Indicates set 5/8" rebar & plug LS 4530.

**SURVEYOR'S CERTIFICATE**

THIS CORNER RECORD WAS PREPARED BY ME OR UNDER MY DIRECTION IN CONFORMANCE WITH THE LAND SURVEYORS ACT ON December 12, 20 02.

SIGNED James Q. Eddy Jr  
 L.S. or R.C.E. No. L.S. 4530

SEAL



**COUNTY SURVEYOR'S CERTIFICATE**

THE CORNER RECORD WAS RECEIVED January 15 20 03 AND EXAMINED AND FILED \_\_\_\_\_ 20 \_\_\_\_.

BY: \_\_\_\_\_

TITLE: \_\_\_\_\_

DOCUMENT No. \_\_\_\_\_ STATEMENT ON BACK OF SHEET YES  NO

CORNER RECORD

COUNTY NUMBER

MOUNT PLEASANT

SECTION 3

TOWNSHIP 12

RANGE 12

SECTION 3



APPROXIMATE LOCATION

FOUND AND TABBED  REESTABLISHED OR REPEATED CORNER  RESULT

PHYSICAL DESCRIPTION OF CORNER FOUND, FOUND AND TABBED, AND MET. CORNER OR MET. CORNER OF REESTABLISHED

The corners of lot 17 were not found. Corners found at other lot corners in Block 8 were used to reestablish positions.

This corner located was re-submitted on additional information, local markers after it signed the corner.

Set of monument with a plug is 4530.

STATE OF CALIFORNIA COUNTY OF MOUNT PLEASANT

BEFORE ME, the undersigned authority, on this day personally appeared \_\_\_\_\_

known to me to be the person whose name is subscribed to the foregoing instrument, and acknowledged to me that he executed the same for the purposes and consideration therein expressed.

Given under my hand and seal of office this \_\_\_\_\_ day of \_\_\_\_\_, 2003.

Notary Public in and for the State of California

My commission expires on \_\_\_\_\_, 2003.

BEARINGS AND DISTANCES ARE RECORDED AND MEASURED BY R.M. BLAUG

Indicates found monument per R.M. Blaug  
Indicates found 1/2" rebar & plug is 4530  
Indicates found 1/2" rebar & plug is 4530  
Indicates set 6" rebar & plug is 4530

COUNTY SURVEYOR'S CERTIFICATE

THE CORNER RECORD WAS REVIEWED BY ME, SURVEYOR, AND FOUND TO BE CORRECT AND TRUE TO THE ORIGINAL RECORD AND FIELD NOTES.

STATEMENT OF WORKSHEET



SURVEYOR'S CERTIFICATE  
THIS CORNER RECORD WAS PREPARED BY ME, SURVEYOR, IN ACCORDANCE WITH THE LAND SURVEYORS ACT, CHAPTER 4, DIVISION 2, OF THE CALIFORNIA GOVERNMENT CODE, AND THE LAND SURVEYORS BOARD REGULATION, CHAPTER 10, DIVISION 2, OF THE CALIFORNIA GOVERNMENT CODE.