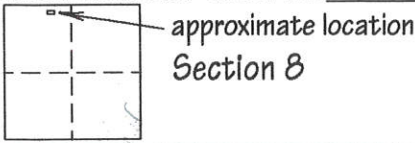


CORNER RECORD

COUNTY OF Plumas T. 28 N R. 7 E Mount Diablo MERIDIAN CALIFORNIA

CORNER TYPE: GOV'T CORNER MEANDER RANCHO CONTROL OTHER
 CORNER IDENTIFICATION - DATE OF VISIT December 12, 20 02



CORNER - LEFT AS FOUND FOUND AND TAGGED REESTABLISHED OBLITERATED CORNER REBUILT

PHYSICAL DESCRIPTION OF CORNER FOUND: EVIDENCE AND METHOD USED TO IDENTIFY OR REESTABLISH

The corners of Lot 11 were not found. Corners found at other lot corners in Block 6 were used to reestablish positions.

PHYSICAL DESCRIPTION OF MONUMENTS REBUILT OR PERPETUATED

Set 5/8" rebar and plastic plug stamped LS 4530.

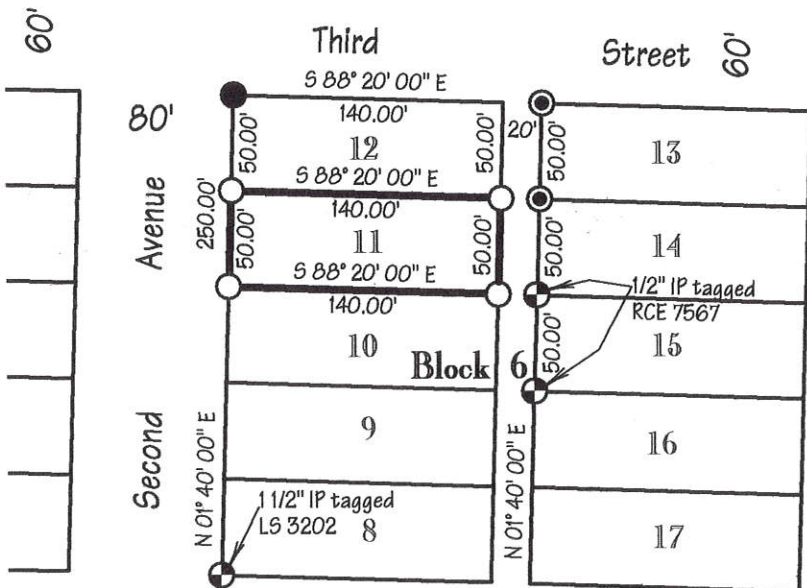
This one was returned w/ more details added

Returned 11-17-03 original 1-15-03

CALIFORNIA COORDINATE SYSTEM ORDER: FIRST SECOND
 STATIONS USED: NGS (USC & GS) STATE COUNTY OTHER
 ZONE _____ ELEVATION _____ NORTHINGS(Y) _____

SKETCH: (Include reference tie or witness points, remarks and topo of area)

Mount Lassen View Addition to Chester R.



Bearings and distances are record and measured per R.M. Bk A, Pg 7

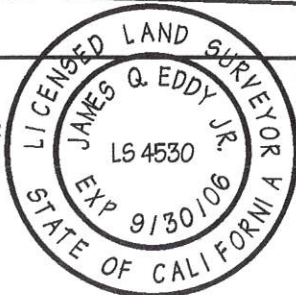
- ⊕ Indicates found monument per 4 PM 116.
- ⊙ Indicates found 1/2" rebar & plug LS 4647, no record.
- Indicates found 1 1/2" IP no tag, No record.
- Indicates set 5/8" rebar & plug LS 4530.

SURVEYOR'S CERTIFICATE

THIS CORNER RECORD WAS PREPARED BY ME OR UNDER MY DIRECTION IN CONFORMANCE WITH THE LAND SURVEYORS ACT ON December 12, 20 02.

SIGNED James Q. Eddy Jr
 L.S. or R.C.E. No. L.S. 4530

SEAL



COUNTY SURVEYOR'S CERTIFICATE

THE CORNER RECORD WAS RECEIVED AND EXAMINED AND FILED December 1, 20 03 No. 32515

BY: R. Tom Hunter 3-31-04
 TITLE: Plumas County

DOCUMENT No. 234
 STATEMENT ON BACK OF SHEET YES NO

