

CORNER RECORD

Document Number 235

A Portion of Sec. 1 T. 22N., R. 13E., MDBM County of Plumas, California  
Brief Legal Description Lot 33 5 M 45, Ridgewood Subdivision, Unit No. 1



CORNER TYPE

Government Corner  Control   
Meander  Property   
Rancho  Other   
Date of Survey August 2, 2002

COORDINATES  
(Optional)

N. \_\_\_\_\_  
E. \_\_\_\_\_  
Zone \_\_\_\_\_ Datum \_\_\_\_\_  
Elev. \_\_\_\_\_

Corner— Left as found  Found and tagged  Established  Reestablished  Rebuilt

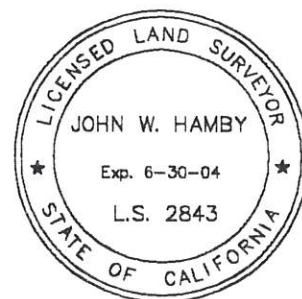
Identification and type of corner found: Evidence used to identify or procedure used to establish or reestablish the corner:  
Found Monuments as shown on attached map, per 5 M 45.

A description of the physical condition of the monument as found and as set or reset:  
Set Monuments as shown on attached map, per 5 M 45.

SURVEYOR'S STATEMENT

This Corner Record was prepared by me or under my direction in conformance with the Land Surveyors' Act on August 2, 2002.

Signed John W. Hamby L.S. 2843  
John W. Hamby



COUNTY SURVEYOR'S STATEMENT

This Corner Record was received August 7 2002 and examined and filed May 27 2003.

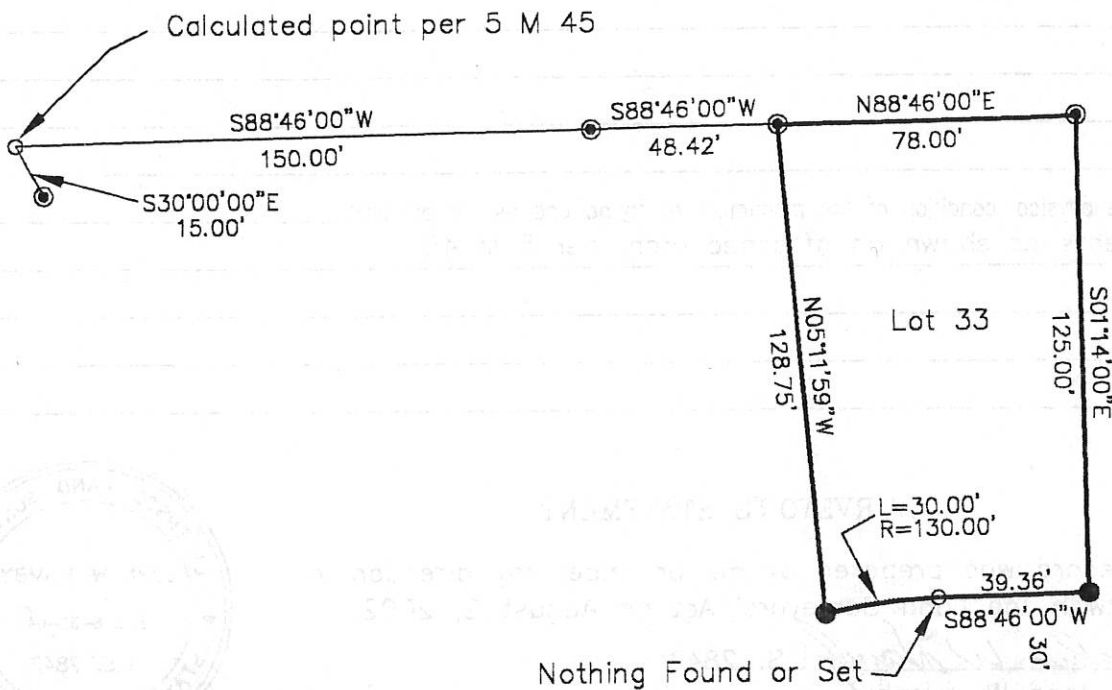
Signed R Tom Swift Title Plumas Co. Engineer



County Surveyor's Comment \_\_\_\_\_



Scale 1" = 50'



Samantha Dr.

Nothing found or set

### LEGEND

- SET 5/8" Rebar with Aluminum Cap LS 2843
- ⊙ FOUND 1/2" rebar with Plastic Cap LS 3297
- Described as noted.

Hamby Surveying Inc.  
 P.O. Box 1209  
 Portola, CA 96122  
 (530) 832-5571