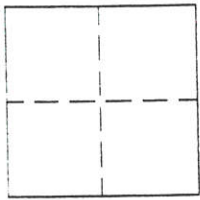


CORNER RECORD

Document Number 236

A Portion of the SE1/4 of Sec35 T23N R13E County of Plumas, California
Brief Legal Description Southwest Corner Lot 2 Block 5 Portola Heights Bk A Pg 23



CORNER TYPE

Government Corner Control
Meander Property
Rancho Other
Date of Survey August 22, 2002.

COORDINATES
(Optional)

N. _____
E. _____
Zone _____ Datum _____
Elev. _____

Corner— Left as found Found and tagged Established Reestablished Rebuilt

Identification and type of corner found: Evidence used to identify or procedure used to establish or reestablish the corner:
Monuments found per 5 RS 33 and 5 RS 86 as shown on attached map.

A description of the physical condition of the monument as found and as set or reset: Set the Southwest corner of Lot 2 Block 5, PORTOLA HEIGHTS BK A Pg 23, per 5 RS 33, as shown on attached map.

SURVEYOR'S STATEMENT

This Corner Record was prepared by me or under my direction in conformance with the Land Surveyors' Act on August 22, 2002.

Signed John W. Hamby L.S. 2843
John W. Hamby



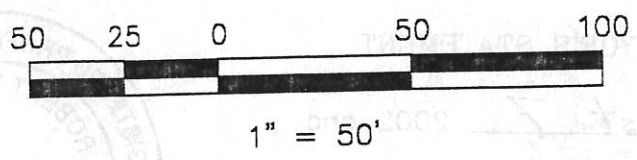
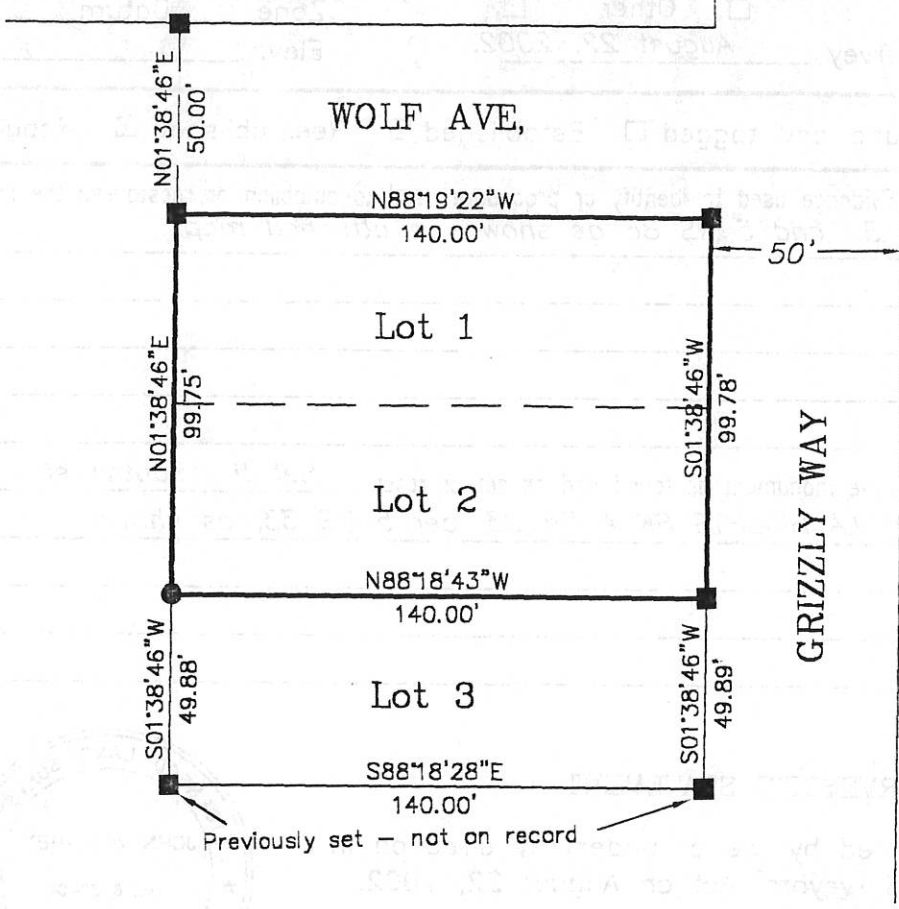
COUNTY SURVEYOR'S STATEMENT

This Corner Record was received August 7 2002 and examined and filed May 27 2003.

Signed R Tom Hunter Title Plumas Co. Engineer



County Surveyor's Comment _____



LEGEND

- FOUND 1/2" Rebar with Aluminum Cap LS 2843
- SET 5/8" Rebar with Aluminum Cap LS 2843

Hamby Surveying Inc.
 P.O. Box 1209
 Portola, CA 96122
 (530) 832-5571

02184CR