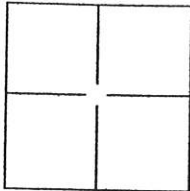


CORNER RECORD

Document Number 237
 County of PLUMAS, California

City of TOWNSITE OF E. QUINCY
 Brief Legal Description WITHIN NW 1/4 of NW 1/4 SECTION 20, T.24N., R.10E., MDM AND SHOWD AS PARCEL 1 ON PAGE 36 IN BOOK 3 OF PARCEL MAPS, PLUMAS COUNTY RECORDS.



CORNER TYPE

Government Corner Control
 Meander Property
 Rancho Other

Date of Survey JUNE 2003

COORDINATES(Optional)

N. _____
 E. _____
 Zone _____ NAD27 NAD83
 NAD83 Epoch _____
 Elevation _____
 Vert. Datum: NGVD29 NAV88
 Meas. Units: Metric Imperial

Corner - Left as found Found and tagged Established Reestablished Rebuilt

Identification and type of corner found: Evidence used to identify or procedure used to establish or reestablish the corner:
THREE CORNERS OF PARCEL 1, BOOK 3 PM PAGE 36 FOUND & CORNER WAS REESTABLISHED FROM FOUND CORNERS
SEE REVERSE!

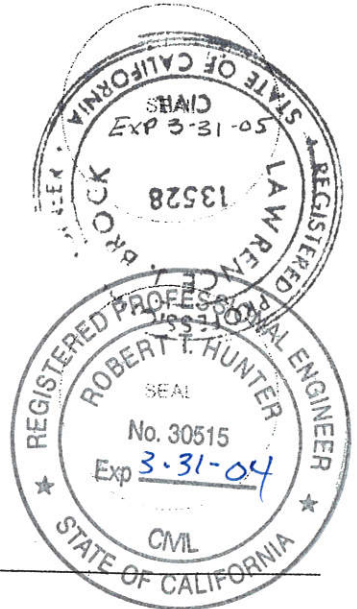
A description of the physical condition of the monument as found and as set or reset: NOTHING FOUND -
I SET AN ALUMINUM CAP (STAMPED RCE 13528) ON AN 18" PIECE OF 1/2" REBAR

SURVEYOR'S STATEMENT

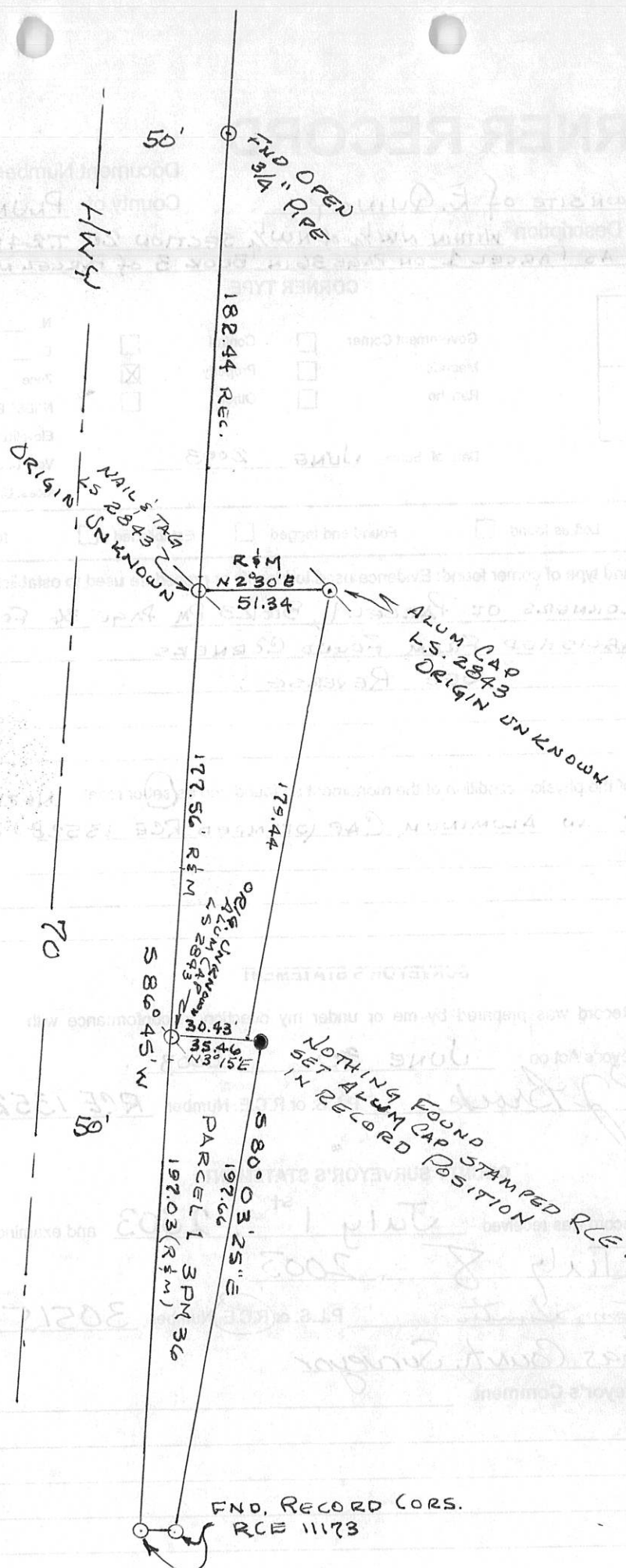
This Corner Record was prepared by me or under my direction in conformance with the Land Surveyor's Act on JUNE 30, 2003.
 Signed LJ Brock P.L.S. or R.C.E. Number RCE 13528

COUNTY SURVEYOR'S STATEMENT

This Corner Record was received July 1st, 2003 and examined and filed July 8, 2003.
 Signed R Tom Hunter P.L.S. or R.C.E. Number 30515
 Title Plumas County Surveyor
 County Surveyor's Comment _____



CORNER RECORD



Doc # 205