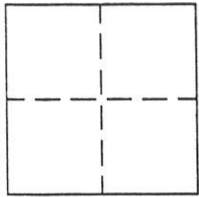


CORNER RECORD

Document Number 238

Section 36, T.23N.R.13E. m.d.m. County of Plumas, California

Brief Legal Description Block 51 Second North Addition to Portola Townsite



CORNER TYPE

Government Corner Control
Meander Property
Rancho Other
Date of Survey June 12, 2003

COORDINATES (Optional)

N. _____
E. _____
Zone _____ Datum _____
Elev. _____

Corner— Left as found Found and tagged Established Reestablished Rebuilt

Identification and type of corner found: Evidence used to identify or procedure used to establish or reestablish the corner:
Found points indicated in good condition as indicated on 8 RS 139.

A description of the physical condition of the monument as found and as set or reset: Set 5/8" rebar with aluminum cap stamped LS 2843 as shown on attached sketch.

SURVEYOR'S STATEMENT

This Corner Record was prepared by me or under my direction in conformance with the Land Surveyors' Act on June 12, 2003.

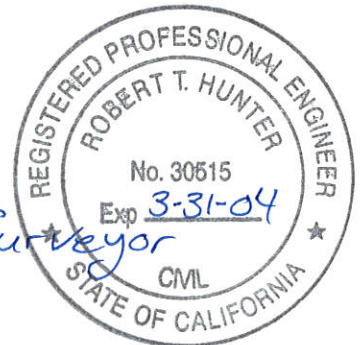
Signed John W. Hamby L.S. 2843
John W. Hamby



COUNTY SURVEYOR'S STATEMENT

This Corner Record was received June 16 2003 and examined and filed 7-8 2003.

Signed R. Tom Sluiter Title Plumas County Surveyor

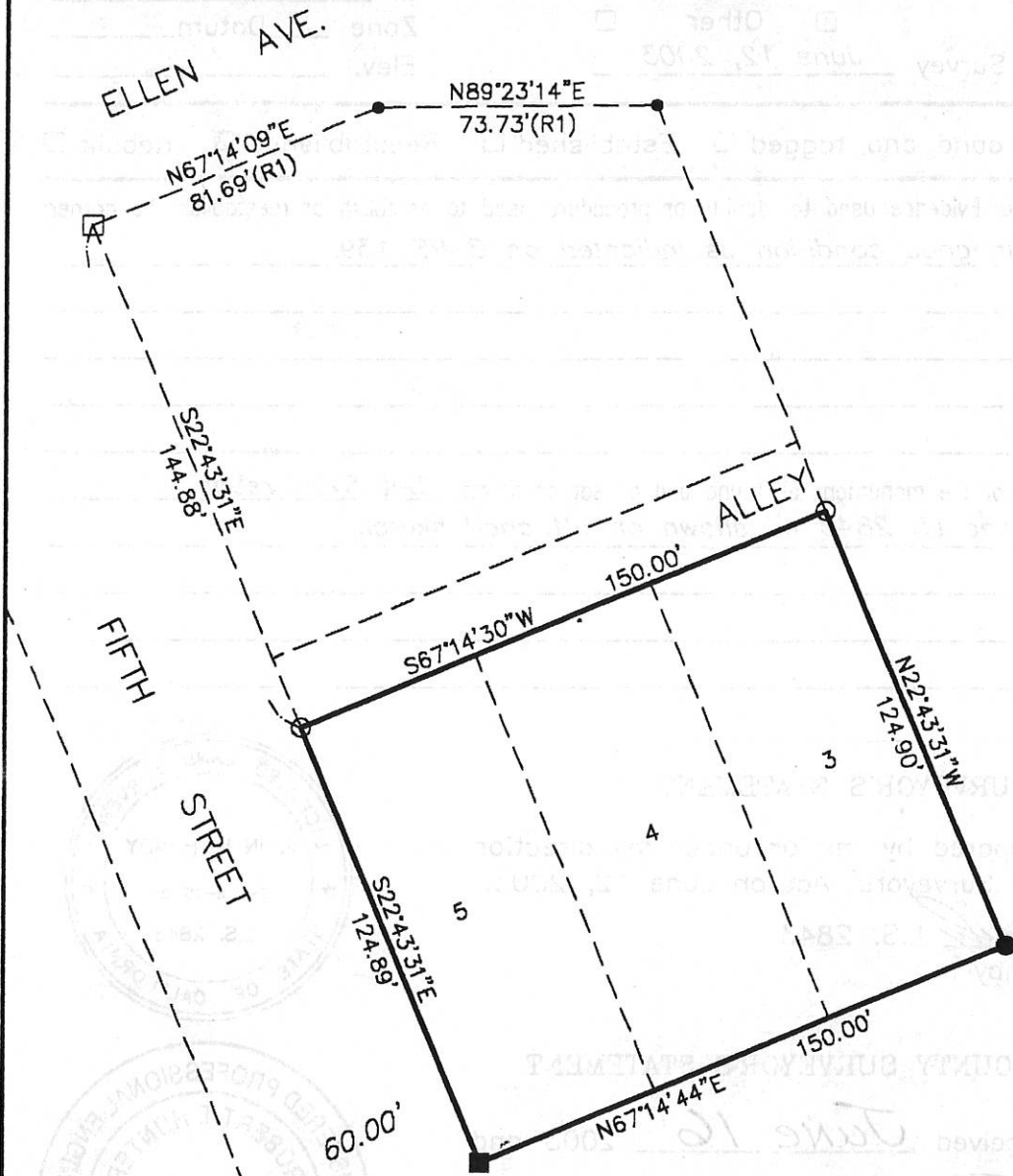


County Surveyor's Comment _____

- FOUND Rebar with Plastic Cap LS 2843
 - FOUND 3/4" Iron Pipe
 - FOUND Bolt tagged LS 2843
 - SET 5/8" Rebar & Aluminum Cap LS 2843
 - Point not found or set
- (R1) Record per 8 RS 139



Scale 1" = 50'



A portion of Block 51 — Second North Add
Portola Townsite

Portola ~ Plumas County ~ California
Scale 1" = 50' June, 2003

Hamby Surveying Inc.
P.O. Box 1209
Portola, CA 96122
(530) 832-5371

03145

SHEET 1 OF 1