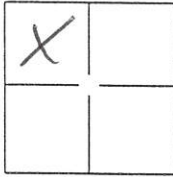


# CORNER RECORD

Document Number # 240

City of PINELEAF ESTATES, MEADOW VAL, County of PLUMAS, California

Brief Legal Description NW 1/4, SECTION 14, T24N R8E MDM



### CORNER TYPE

Government Corner  Control   
Meander  Property   
Rancho  Other

Date of Survey JULY 8, 2003

### COORDINATES(Optional)

N. \_\_\_\_\_  
E. \_\_\_\_\_  
Zone \_\_\_\_\_ NAD27  NAD83   
NAD83 Epoch \_\_\_\_\_  
Elevation \_\_\_\_\_  
Vert. Datum: NGVD29  NAV88   
Meas. Units: Metric  Imperial

Corner - Left as found  Found and tagged  Established  Reestablished  Rebuilt

Identification and type of corner found: Evidence used to identify or procedure used to establish or reestablish the corner:

SEE INFORMATION ON BACK

A description of the physical condition of the monument as found and as set or reset:

SEE INFORMATION ON BACK

### SURVEYOR'S STATEMENT

This Corner Record was prepared by me or under my direction in conformance with the Land Surveyor's Act on JULY 9, 2003.

Signed Richard Knoettgen (P.L.S. or R.C.E. Number 67794)



### COUNTY SURVEYORS STATEMENT

This Corner Record was received July 10, 2003 and examined and filed July 14, 2003.

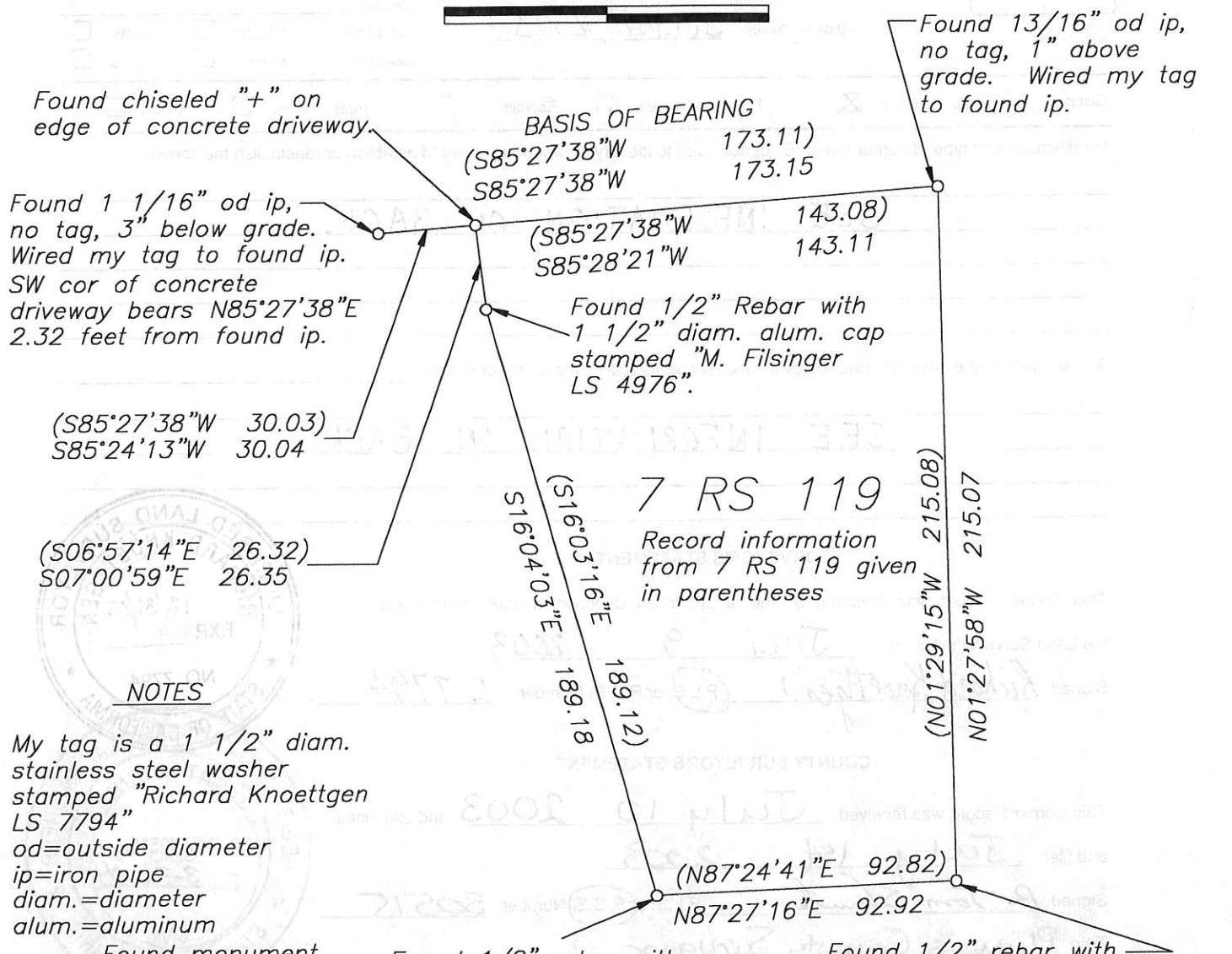
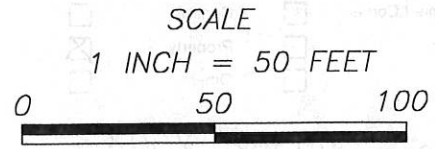
Signed R Tom Shute P.L.S. (R.C.E.) Number 30515

Title Plumas County Surveyor

County Surveyor's Comment \_\_\_\_\_



Doc # 240



Found chiseled "+" on edge of concrete driveway.

Found 1 1/16" od ip, no tag, 3" below grade. Wired my tag to found ip. SW cor of concrete driveway bears N85°27'38"E 2.32 feet from found ip.

Found 13/16" od ip, no tag, 1" above grade. Wired my tag to found ip.

Found 1/2" Rebar with 1 1/2" diam. alum. cap stamped "M. Filsinger LS 4976".

NOTES

My tag is a 1 1/2" diam. stainless steel washer stamped "Richard Knoettgen LS 7794"  
od=outside diameter  
ip=iron pipe  
diam.=diameter  
alum.=aluminum

○ = Found monument as described

Found 1/2" rebar with 1 1/2" diam. alum. cap, 1" below grade. Stamped "M. Filsinger LS 4976".

Found 1/2" rebar with yellow plastic cap, 2" below grade. Stamped "C. Brown RCE 22836" From which bears 1/2" rebar, no cap and 1" angle iron S02°41'31"W 1.69 feet, no record.

Doc # 240