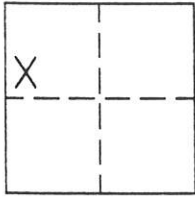


CORNER RECORD

Document Number 241

IN THE NW1/4 SEC. 36, T. 23 N., R. 16E., M.D.M. County of PLUMAS, California
Brief Legal Description PARCEL 3 OF 5 PM 119



CORNER TYPE

Government Corner Control
Meander Property
Rancho Other
Date of Survey June 19, 2003

COORDINATES
(Optional)

N. _____
E. _____
Zone _____ Datum _____
Elev. _____

Corner- Left as found Found and tagged Established Reestablished Rebuilt

Identification and type of corner found: Evidence used to identify or procedure used to establish or reestablish the corner:
FOUND POINTS AS SHOWN AND DESCRIBED ON ATTACHED SKETCH AS SHOWN ON 5 PM 119.

A description of the physical condition of the monument as found and as set or reset:
FOUND POINTS AS DESCRIBED AND IN GOOD CONDITION. POINTS SET AS SHOWN ON ATTACHED SKETCH.

SURVEYOR'S STATEMENT

This Corner Record was prepared by me or under my direction in conformance with the Land Surveyors' Act on June 30, 2003.

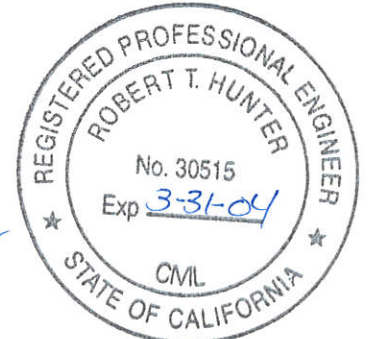
Signed John W. Hamby L.S. 2843
John W. Hamby



COUNTY SURVEYOR'S STATEMENT

This Corner Record was received July 16, 2003 and examined and filed August 5 2003.

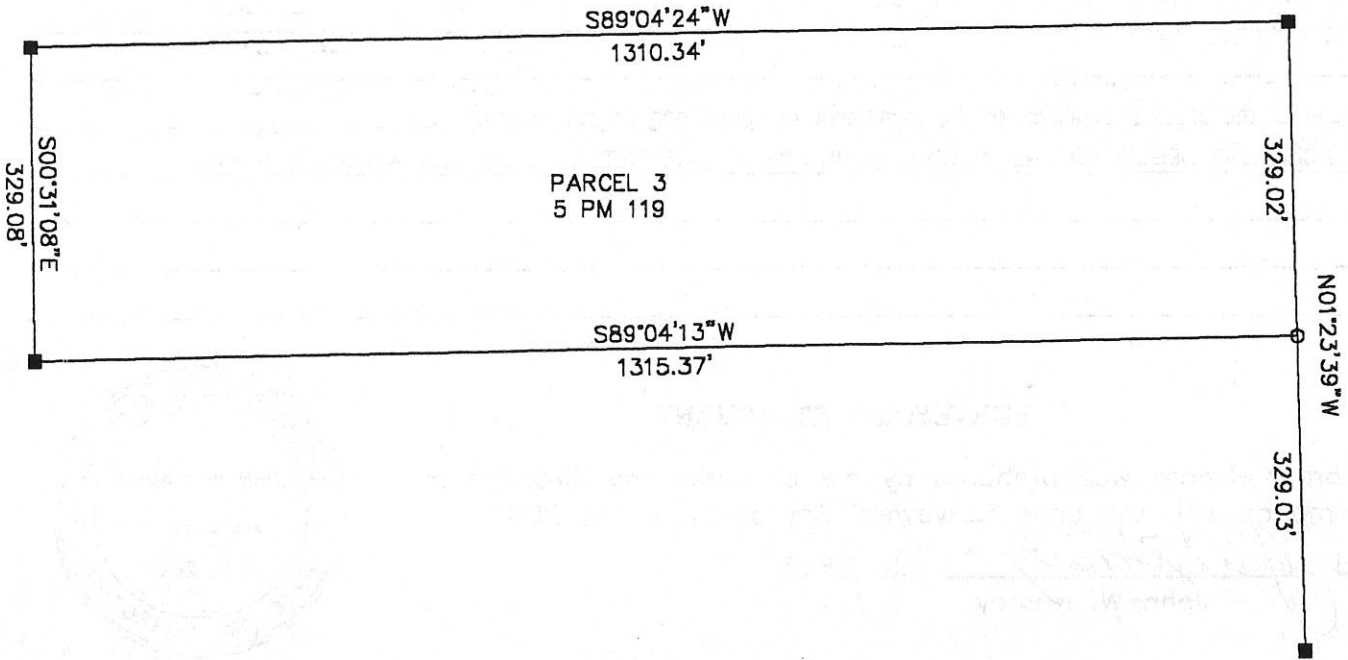
Signed Robert T. Hunter Title County Surveyor



County Surveyor's Comment _____



1" = 200'



LEGEND

- FOUND 3/4" I.P. Tagged LS 2843
- SET 5/8" Rebar & Aluminum Cap LS 2843

Hamby Surveying Inc.
P.O. Box 1209
Portola, CA 96122
(530) 832-5571