

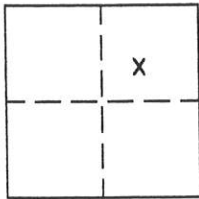
CORNER RECORD

Document Number 242

Portion N.E. 1/4 Sec. 36, T.23N.R.13E. MDM

County of Plumas, California

Brief Legal Description Lots 13,14,15,16, Block 3 Northern Addition to Portola - Book A, Pg. 32



CORNER TYPE

- Government Corner Control
- Meander Property
- Rancho Other
- Date of Survey June 24, 2003

COORDINATES (Optional)

N. _____
 E. _____
 Zone _____ Datum _____
 Elev. _____

Corner— Left as found Found and tagged Established Reestablished Rebuilt

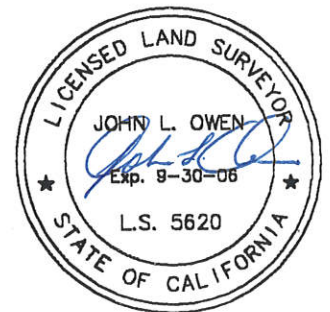
Identification and type of corner found: Evidence used to identify or procedure used to establish or reestablish the corner:
Found points as indicated on attached sketch.

A description of the physical condition of the monument as found and as set or reset: All found points indicated on the attached sketch were in good condition.

SURVEYOR'S STATEMENT

This Corner Record was prepared by me or under my direction in conformance with the Land Surveyors' Act on July 17, 2003.

Signed John L. Owen L.S. 5620



COUNTY SURVEYOR'S STATEMENT

This Corner Record was received 7-23 2003 and examined and filed August 5 2003.

Signed R. Tom Hunter Title County Surveyor

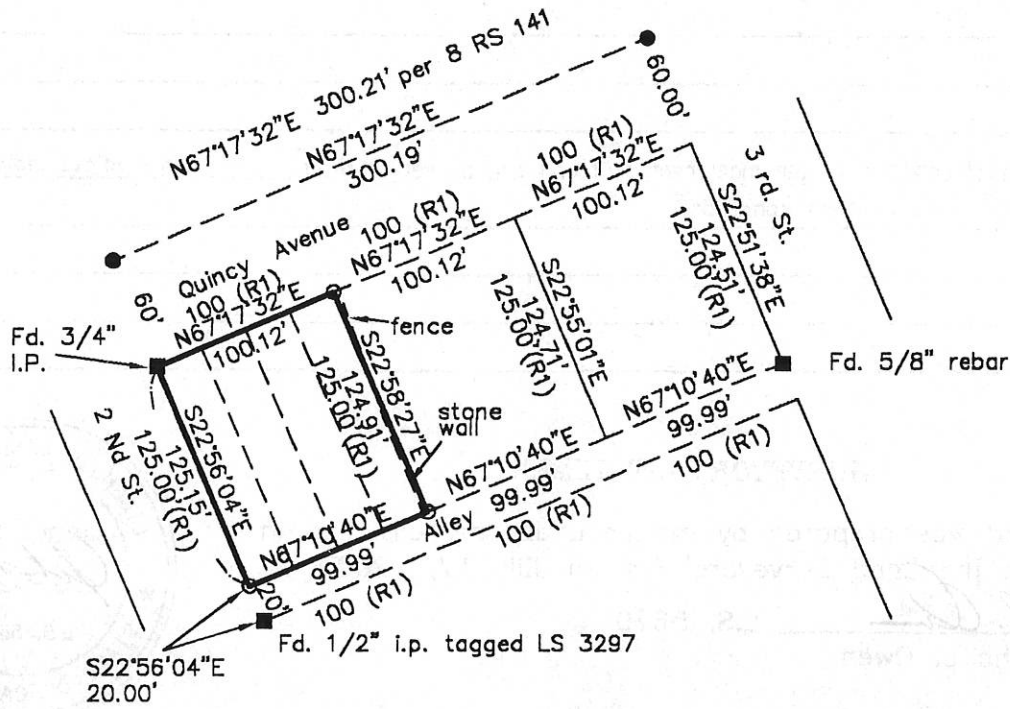


County Surveyor's Comment _____

- FOUND Rebar with Aluminum Cap LS 2843
- FOUND point as described
- SET 5/8" Rebar & Aluminum Cap LS 5620
- (R1) Record per Book A page 32.



Scale 1" = 100'



PORTION BLOCK 3
NORTHERN ADD. TO PORTOLA

R.M. Book A, page 32

Portola Plumas County Calif.

Scale 1" = 100' June 2003

Hamby Surveying Inc.
P.O. Box 1209
Portola, CA 96122
(530) 832-5571