

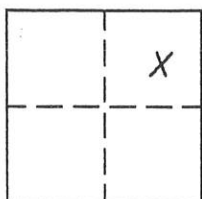
CORNER RECORD

Document Number 243

Portion Section 26, T.23N.R.14E.

County of Plumas, California

Brief Legal Description Lots 3,4 &5 Block 3 Kelseys Addition to Beckwourth



CORNER TYPE

COORDINATES (Optional)

Government Corner Control
Meander Property
Rancho Other
Date of Survey July, 28, 2003

N. _____
E. _____
Zone _____ Datum _____
Elev. _____

Corner— Left as found Found and tagged Established Reestablished Rebuilt

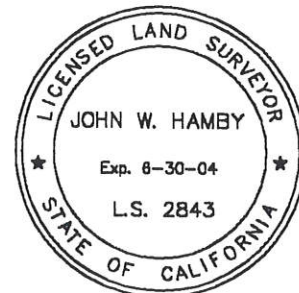
Identification and type of corner found: Evidence used to identify or procedure used to establish or reestablish the corner:
Found corner monuments as indicated on the attached sketch, and set corners as indicated.

A description of the physical condition of the monument as found and as set or reset: The found corners were in good condition and in proper locations or as shown.

SURVEYOR'S STATEMENT

This Corner Record was prepared by me or under my direction in conformance with the Land Surveyors' Act on July 28, 2003.

Signed JW Hamby L.S. 2843
John W. Hamby



COUNTY SURVEYOR'S STATEMENT

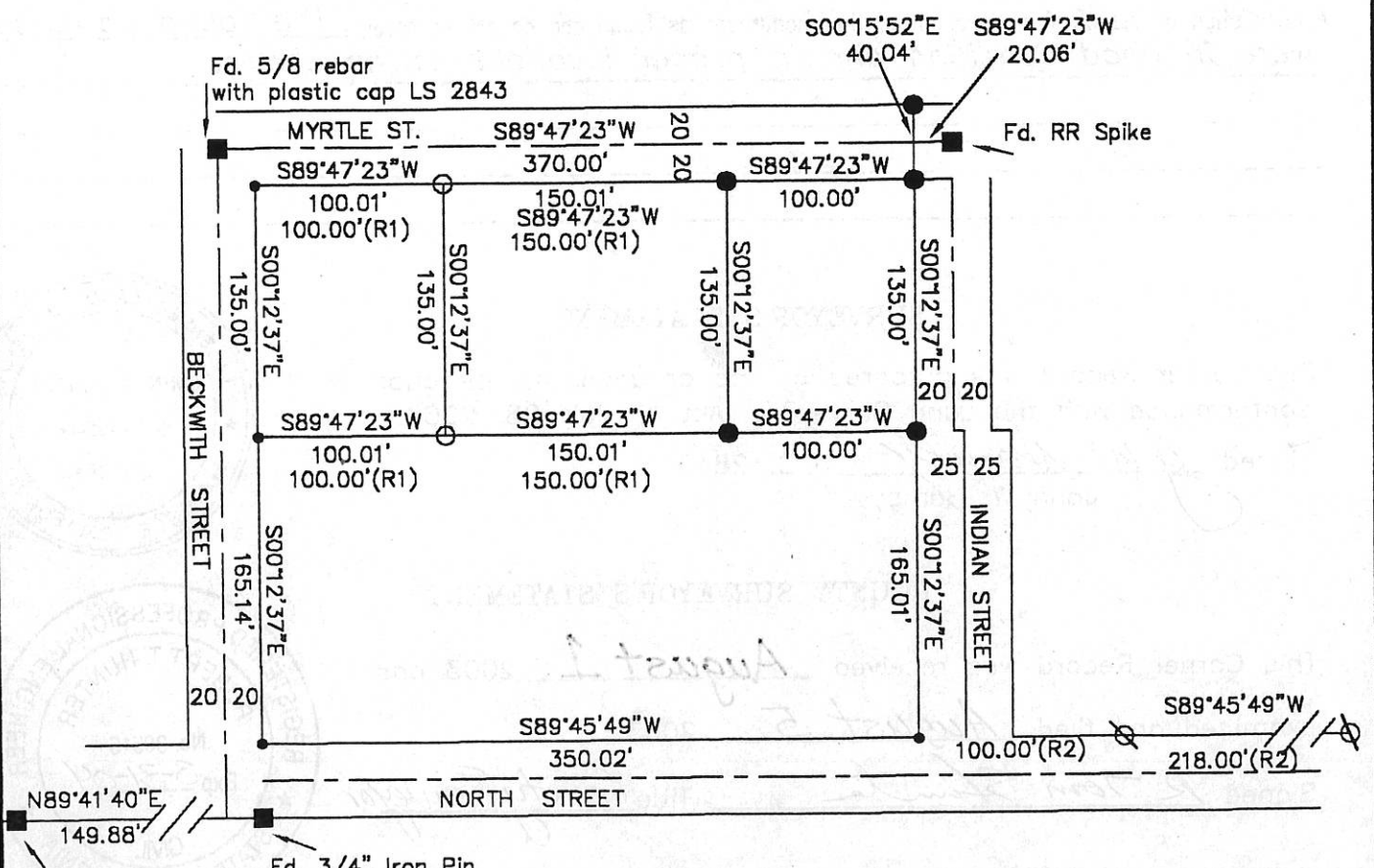
This Corner Record was received August 1 2003 and examined and filed August 5 2003.

Signed R Tom Hunter Title County Surveyor



County Surveyor's Comment _____

- FOUND point as described
 - FOUND Rebar with Aluminum Cap LS 2843
 - SET 5/8" Rebar & Aluminum Cap LS 2843
 - ⊗ FOUND 3/4" I.P. tagged L.S. 6051
 - Nothing found or set
- (R1) RECORD per 7 RS 148
 (R2) RECORD per 9 RS 136



BLOCK 3
 KELSEY'S ADDITION
 TO BECKWOURTH
 Portion Sec. 26
 T.23N., R14E. M.D.M.
 Scale 1"=100'

Hamby Surveying Inc.
 P.O. Box 1209
 Portola, CA 96122
 (530) 832-5571

03181