

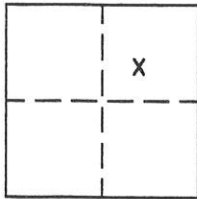
# CORNER RECORD

Document Number 245

Portion N.E. 1/4 Sec. 36, T.23N.R.13E. MDM

County of Plumas, California

Brief Legal Description Lots 21,22,23,24, Block 3 Northern Addition to Portola - Book A, Pg. 32



### CORNER TYPE

Government Corner  Control   
 Meander  Property   
 Rancho  Other   
 Date of Survey August 28, 2003

### COORDINATES (Optional)

N. \_\_\_\_\_  
 E. \_\_\_\_\_  
 Zone \_\_\_\_\_ Datum \_\_\_\_\_  
 Elev. \_\_\_\_\_

Corner— Left as found  Found and tagged  Established  Reestablished  Rebuilt

Identification and type of corner found: Evidence used to identify or procedure used to establish or reestablish the corner:  
Found points as indicated on attached sketch.

A description of the physical condition of the monument as found and as set or reset: All found points indicated on the attached sketch were in good condition.

### SURVEYOR'S STATEMENT

This Corner Record was prepared by me or under my direction in conformance with the Land Surveyors' Act on Sept. 2, 2003.

Signed John W. Hamby L.S. 2843  
 John W. Hamby



### COUNTY SURVEYOR'S STATEMENT

This Corner Record was received September 3 2003 and examined and filed September 10 2003.

Signed R. Tom Hunter Title Plumas Co. Surveyor

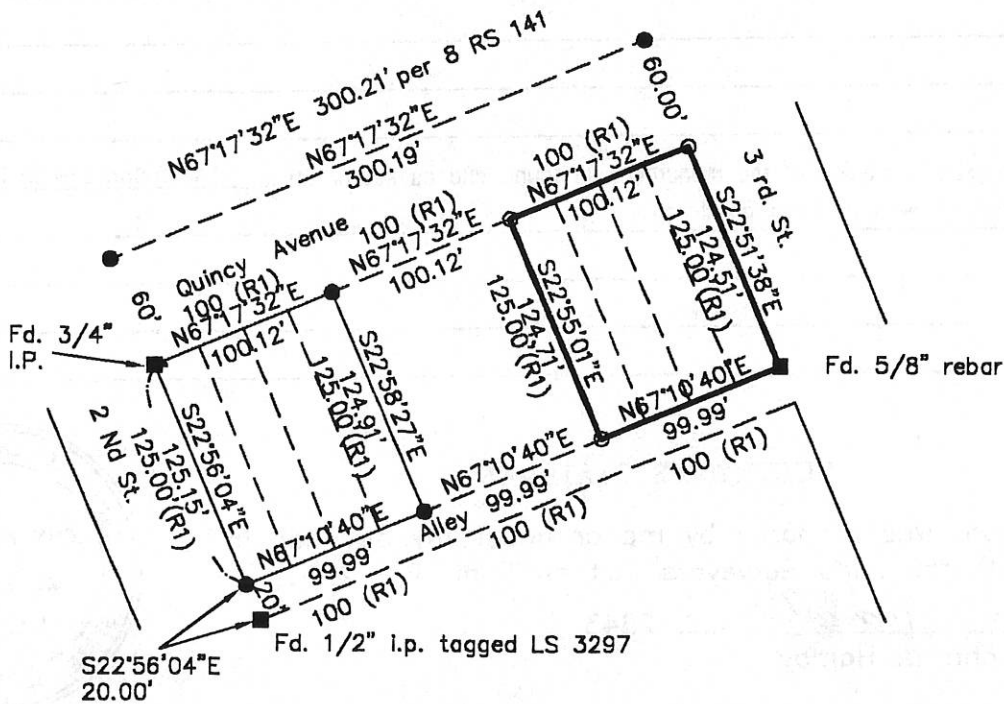


County Surveyor's Comment \_\_\_\_\_

- FOUND Rebar with Aluminum Cap LS 5620
- FOUND point as described
- SET 5/8" Rebar & Aluminum Cap LS 2843
- (R1) Record per Book A page 32.



Scale 1" = 100'



**PORTION BLOCK 3  
NORTHERN ADD. TO PORTOLA**

R.M. Book A, page 32

Portola Plumas County Calif.

Scale 1" = 100' September, 2003

Hamby Surveying Inc.  
P.O. Box 1209  
Portola, CA 96122  
(530) 832-5571

03226