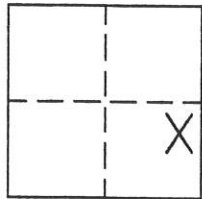


CORNER RECORD

Document Number 246

IN THE SE1/4 OF SEC 24, T.26N., R.9E., M.D.M. County of PLUMAS, California

Brief Legal Description PARCEL 4 OF 1 PM 65



CORNER TYPE

Government Corner Control
Meander Property
Rancho Other
Date of Survey AUG. 1, 2003

COORDINATES (Optional)

N. _____
E. _____
Zone _____ Datum _____
Elev. _____

Corner— Left as found Found and tagged Established Reestablished Rebuilt

Identification and type of corner found: Evidence used to identify or procedure used to establish or reestablish the corner:
Found points as shown and described on attached sketch and as shown on 1 PM 65

A description of the physical condition of the monument as found and as set or reset:
Found points as described and in good condition. Points set as shown on attached sketch.

SURVEYOR'S STATEMENT

This Corner Record was prepared by me or under my direction in conformance with the Land Surveyors' Act on Aug. 22, 2003.

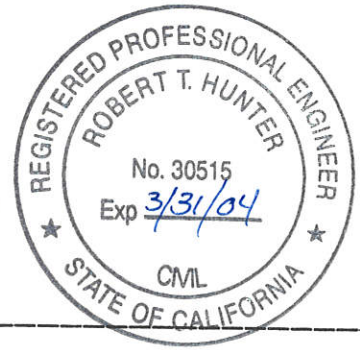
Signed John W. Hamby L.S. 2843
John W. Hamby



COUNTY SURVEYOR'S STATEMENT

This Corner Record was received August 27 2003 and examined and filed September 10 2003.

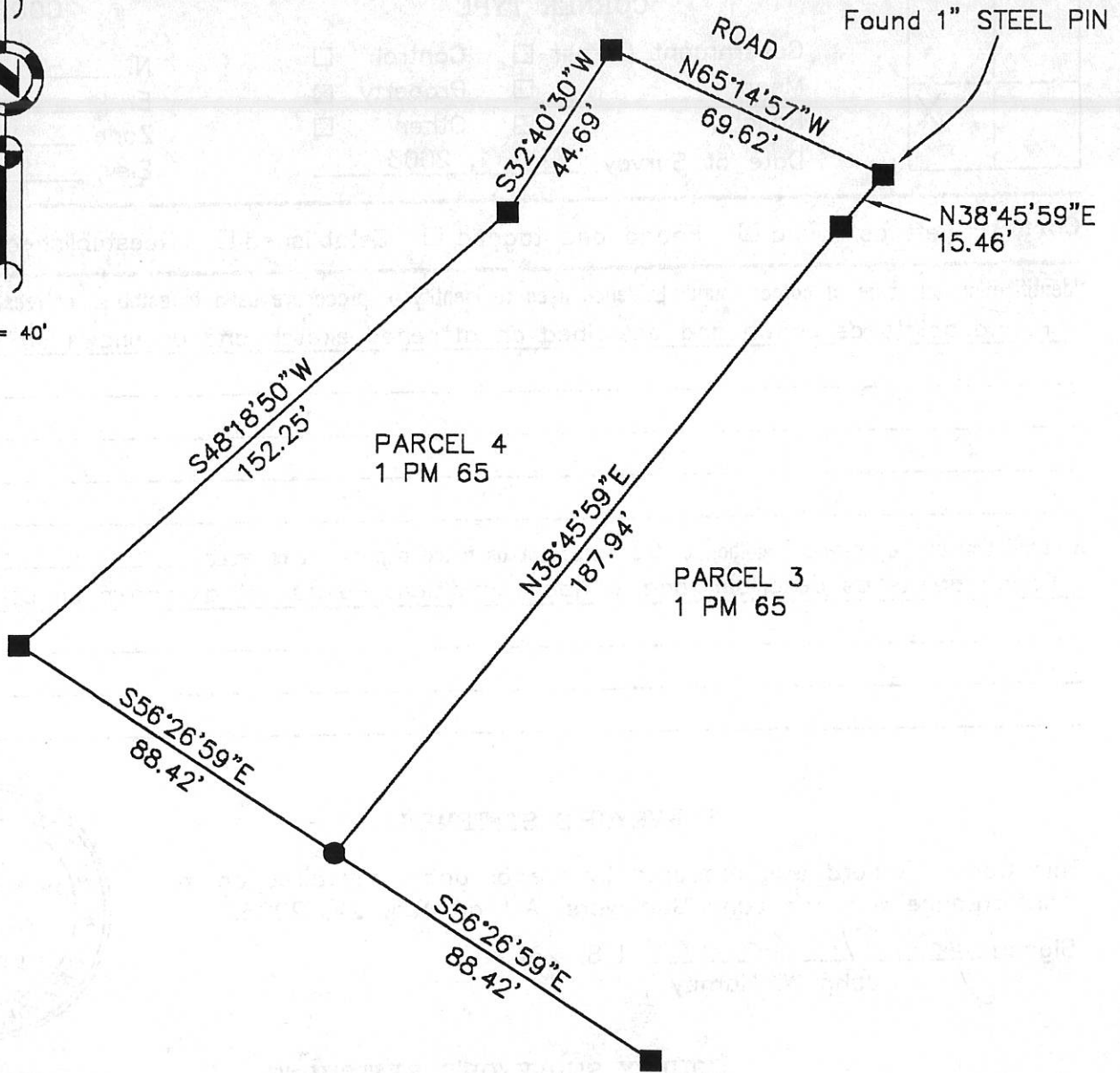
Signed R. Tom Hunter Title Plumas Co. Surveyor



County Surveyor's Comment _____



1" = 40'



LEGEND

- FOUND 1" IP RCE 11173 or as noted
- SET 5/8" Rebar & Aluminum Cap LS 2843

Hamby Surveying Inc.
P.O. Box 1209
Portola, CA 96122
(530) 832-5571

03161