

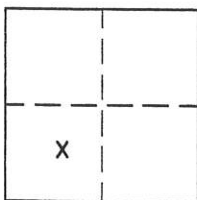
CORNER RECORD

Document Number 247

Portion Section 8 T.24N.R.16E. MDM

County of Plumas, California

Brief Legal Description Lot 34 - Frenchman Village Tract - 3 M 33



CORNER TYPE

Government Corner  Control   
Meander  Property   
Rancho  Other   
Date of Survey Sept. 20, 2003

COORDINATES (Optional)

N. \_\_\_\_\_  
E. \_\_\_\_\_  
Zone \_\_\_\_\_ Datum \_\_\_\_\_  
Elev. \_\_\_\_\_

Corner- Left as found  Found and tagged  Established  Reestablished  Rebuilt

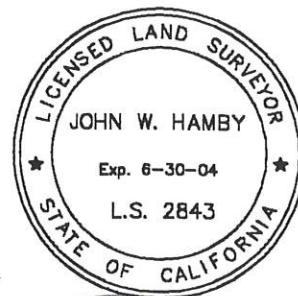
Identification and type of corner found: Evidence used to identify or procedure used to establish or reestablish the corner:  
Found 1/2" rebar and 1/2" I.P. as shown on attached sketch and on 3 M 33.

A description of the physical condition of the monument as found and as set or reset: Set 5/8" Rebar with Aluminum caps tagged LS 2843 as shown to replace monuments knocked out by installation of water lines and drainage ditches.

SURVEYOR'S STATEMENT

This Corner Record was prepared by me or under my direction in conformance with the Land Surveyors' Act on Sept. 20, 2003.

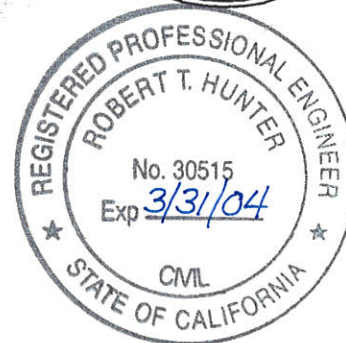
Signed John W. Hamby L.S. 2843  
John W. Hamby



COUNTY SURVEYOR'S STATEMENT

This Corner Record was received September 25 2003 and examined and filed 10-3 2003.

Signed R. Tom Hunter Title Plumas County Surveyor

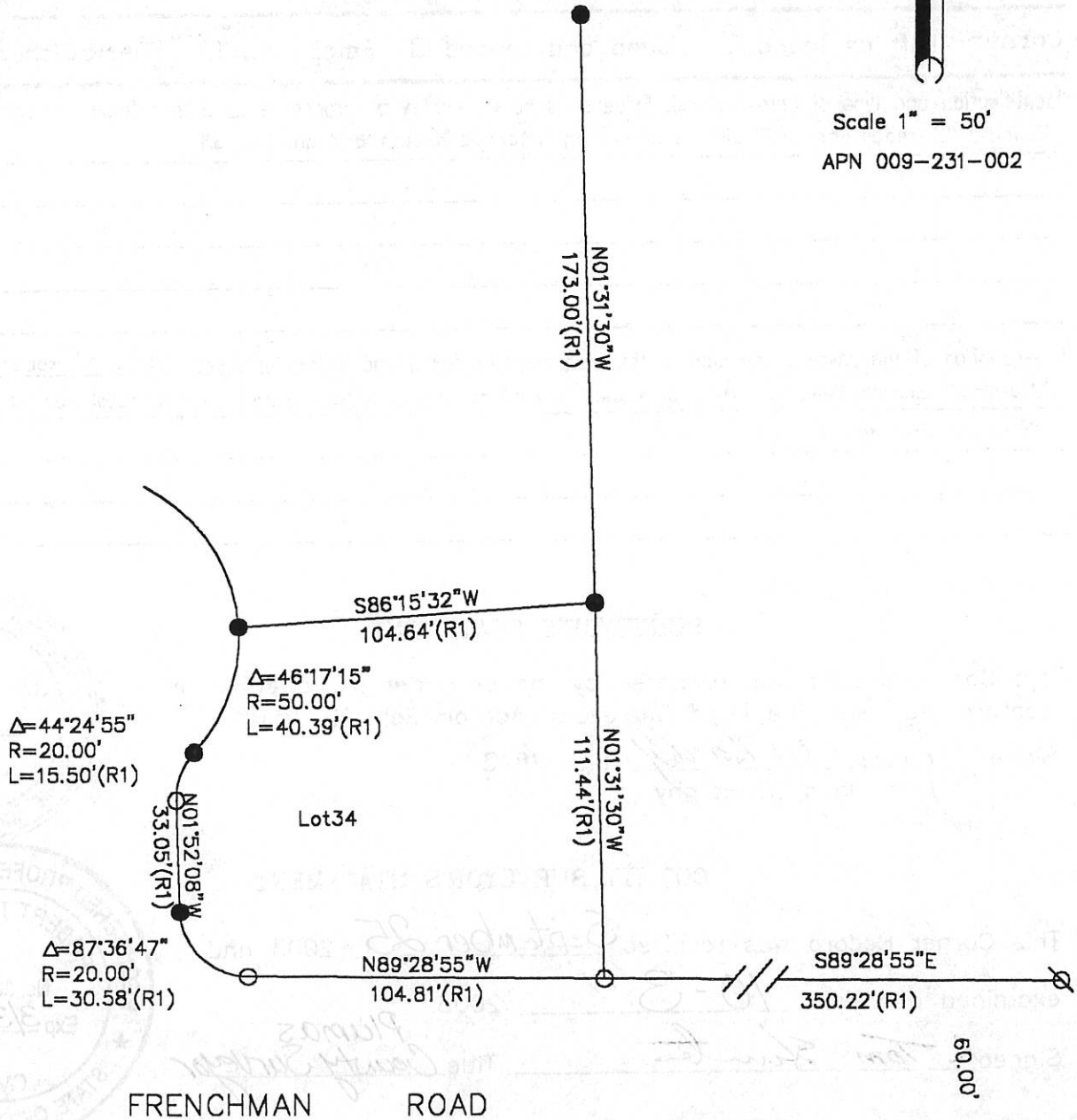


County Surveyor's Comment \_\_\_\_\_

- FOUND 1/2" Rebar 3 M 33
  - ⊗ FOUND 1/2" I.P. per 3 M 33
  - SET 5/8" Rebar & Aluminum Cap LS 2843
- (R1) RECORD per 3 M 33.



Scale 1" = 50'  
 APN 009-231-002



FRENCHMAN VILLAGE TRACT

Section 8, T.24N.R.16E. MDM

Plumas County, Ca  
 Scale 1" = 50' Sept. 2003

Hamby Surveying Inc.  
 P.O. Box 1209  
 Portola, CA 96122  
 (530) 832-5571

03243