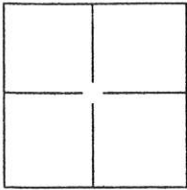


# CORNER RECORD

Document Number 248  
County of PLUMAS, California

City of \_\_\_\_\_

Brief Legal Description NW 1/4 NW 1/4 S 19 T 24N R 10E



### CORNER TYPE

Government Corner  Control   
Meander  Property   
Rancho  Other

Date of Survey OCTOBER 20, 2003

### COORDINATES(Optional)

N. \_\_\_\_\_  
E. \_\_\_\_\_  
Zone \_\_\_\_\_ NAD27  NAD83   
NAD83 Epoch \_\_\_\_\_  
Elevation \_\_\_\_\_  
Vert. Datum: NGVD29  NAV88   
Meas. Units: Metric  Imperial

Corner - Left as found  Found and tagged  Established  Reestablished  Rebuilt

Identification and type of corner found: Evidence used to identify or procedure used to establish or reestablish the corner:

SEE BACK SIDE

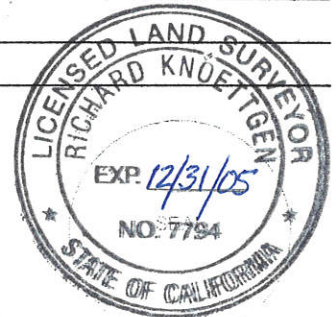
A description of the physical condition of the monument as found and as set or reset:

SEE BACK SIDE

### SURVEYOR'S STATEMENT

This Corner Record was prepared by me or under my direction in conformance with the Land Surveyor's Act on OCTOBER 27, 2003.

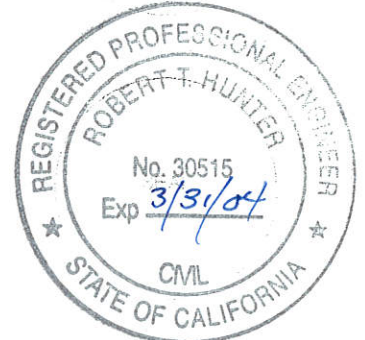
Signed Richard Knoettgen P.L.S. or R.C.E. Number L 7794  
For the State of California  
Department of Transportation



### COUNTY SURVEYOR'S STATEMENT

This Corner Record was received October 27, 2003 and examined and filed October 30, 2003.

Signed R. Tom Stumbo P.L.S. or R.C.E. Number 30515  
Title County Surveyor  
County Surveyor's Comment \_\_\_\_\_

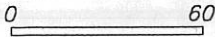


Doc # 248

STARLIGHT MISSIONARY BAPTIST CHURCH OF QUINCY



1 INCH = 60 FEET



NOTES

All record information given in parentheses

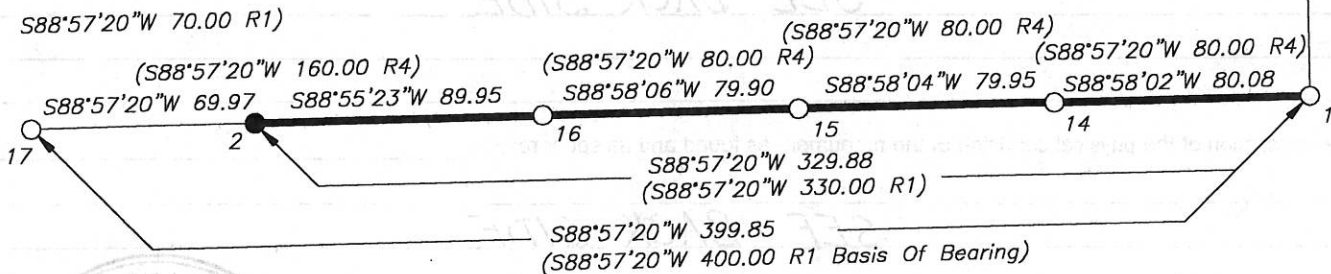
- (R1 = 3 PM 120)
- (R2 = 6 PM 43)
- (R4 = 7 M 14)
- (R5 = 12 RS 76)
- (R5/C = Calculated from R5)

My tag is a 1 1/2" dia. steel washer stamped  
Richard Knoettgen LS 7794

LEGEND

- Monument found
- Monument set
- Northerly boundary of Church property
- ip iron pipe
- od outside diameter

25  
 (S01°11'13"E 200.00 R1)  
 (N01°11'13"W 200.00 R4)  
 (S01°18'24"E 199.96 R5/C)  
 S01°10'09"E 200.02



Corner 17	Corner 2	Corner 16	Corner 15
(Set 1/2" Steel Pin with plastic cap RCE 11173 R1)	(Set 1/2" Steel Pin with plastic cap RCE 11173 R1)	Not shown on R1	Not shown on R1
Not shown on R2	(Set 3/4" Iron Pipe tagged R.E. 8596 R2)	Not shown on R2	Not shown on R2
(Fd. 1/2" ip RCE 11173 R4)	Not shown on R4	(Set 1/2" rebar RCE 22836 R4)	(Set 1/2" rebar RCE 22836 R4)
Not shown on R5	Not shown on R5	Not shown on R5	Not shown on R5
Fd. 1/2" rebar no cap wired my tag to found rebar	Nothing found. Set 1/2" rebar w/1 1/2" alum cap stamped "Richard Knoettgen LS 7794" Set "T" steel fence post M45"W 0.5 ft S E	Fd. 1/2" rebar w/plastic cap stamped "C. Brown RCE 22836" Set "T" steel fence post West 0.5 ft. EAST	Fd. 1/2" rebar w/plastic cap stamped "C. Brown RCE 22836"
Corner 14	Corner 1	Corner 25	
lot shown on R1	(Set 1.2" Steel Pin with plastic cap RCE 11173 R1)	(Found 1/2" Steel Pin and plastic cap, R.C.E. 11173 R1)	
lot shown on R2	(Set 3/4" Iron Pipe tagged R.E. 8596 R2)	Not shown on R2	
Set 1/2" rebar RCE 22836 R4)	(Fd. 1/2" ip RCE 11173 R4)	(destroyed by fence construction Reset 1/2" bar RCE 22836 R4)	
Not shown on R5	(Fd. 1/2" Iron pipe no tag South 0.21' from rec. pos. R5)	(Fd 1/2" rebar w/plastic cap, RCE 22836 S58°14'26"W 0.49' from rec. pos. R5)	
d. 1/2" rebar w/plastic cap stamped "C. Brown RCE 22836"	Fd 1" odip no tag wired my tag to od ip fwb a "t" steel fence post S5"W 0.33	Fd. 1/2" rebar w/plastic cap stamped "C. Brown RCE 22836"	