

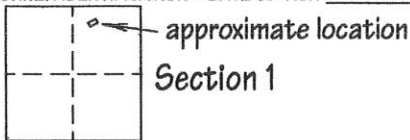
102-604004

CORNER RECORD

250

COUNTY OF Plumas T. 27 N R. 7 E Mount Diablo MERIDIAN CALIFORNIA

CORNER TYPE: GOV'T CORNER MEANDER RANCHO CONTROL OTHER
CORNER IDENTIFICATION - DATE OF VISIT July 3 2003



CORNER - LEFT AS FOUND FOUND AND TAGGED REESTABLISHED OBLITERATED CORNER REBUILT

PHYSICAL DESCRIPTION OF CORNER FOUND: EVIDENCE AND METHOD USED TO IDENTIFY OR REESTABLISH

The Southwesterly corner of Lot 8 was found out of the ground. The Northwesterly corner of Lot 8 was not found. Existing corners found on Lots 7, 8 and 9 were used to reestablish the two corners.

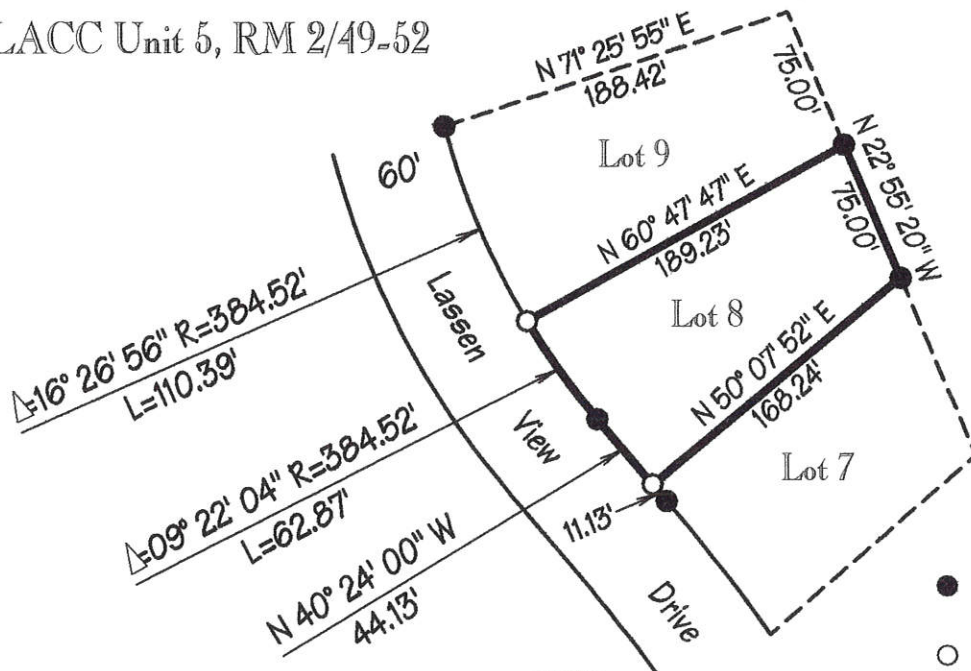
PHYSICAL DESCRIPTION OF MONUMENTS REBUILT OR PERPETUATED

Set 5/8" rebar and plastic plug stamped LS 4530

CALIFORNIA COORDINATE SYSTEM ORDER: FIRST SECOND THIRD
STATIONS USED: NGS (USC & GS) STATE COUNTY OTHER STATION _____ STATION _____
ZONE _____ ELEVATION _____ NORTHINGS(Y) _____ EASTINGS (X) _____

SKETCH: (Include reference tie or witness points, remarks and topo of area)

LACC Unit 5, RM 2/49-52



- Indicates found ip tagged LS 2322 per RM 2/49-52.
- Indicates Set 5/8" rebar tagged LS 4530.

SURVEYOR'S CERTIFICATE

THIS CORNER RECORD WAS PREPARED BY ME OR UNDER MY DIRECTION IN CONFORMANCE WITH THE LAND SURVEYORS ACT ON July 31 2003.

SIGNED James Q. Eddy Jr
L.S. or R.C.E. No. L.S. 4530

SEAL



COUNTY SURVEYOR'S CERTIFICATE

THE CORNER RECORD WAS RECEIVED AND EXAMINED AND FILED December 17 2003.

BY: R Tom Stuntz Exp. 3-31-04

TITLE: Plumas County Surveyor
STATE OF CALIFORNIA CIVIL ENGINEER

DOCUMENT No. 250
STATEMENT ON BACK OF SHEET YES NO

