

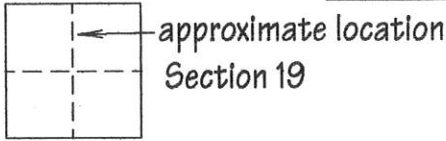
102-192-003+004

CORNER RECORD

251

COUNTY OF Plumas T. 28 N R. 8 E Mount Diablo MERIDIAN CALIFORNIA

CORNER TYPE: GOV'T CORNER MEANDER RANCHO CONTROL OTHER
CORNER IDENTIFICATION - DATE OF VISIT August 25, 20 03



CORNER - LEFT AS FOUND FOUND AND TAGGED REESTABLISHED OBLITERATED CORNER REBUILT

PHYSICAL DESCRIPTION OF CORNER FOUND: EVIDENCE AND METHOD USED TO IDENTIFY OR REESTABLISH

Original corners per RM 1/62 were not found. Corners found at other positions were used to reestablish the missing corners.

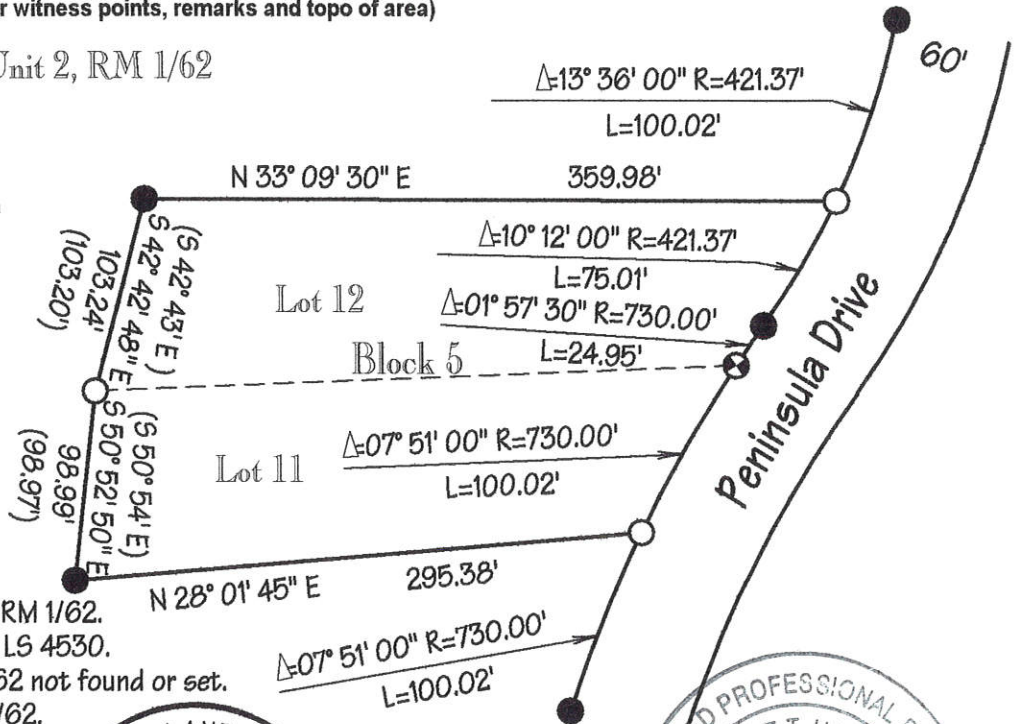
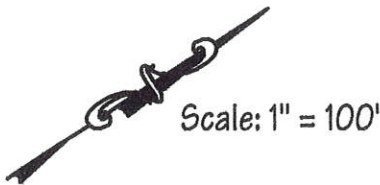
PHYSICAL DESCRIPTION OF MONUMENTS REBUILT OR PERPETUATED

Set 5/8" rebar and plastic plug stamped LS 4530

CALIFORNIA COORDINATE SYSTEM ORDER: FIRST SECOND THIRD
STATIONS USED: NGS (USC & GS) STATE COUNTY OTHER STATION EASTINGS (X)
ZONE ELEVATION NORTHINGS(Y)

SKETCH: (Include reference tie or witness points, remarks and topo of area)

Lake Almanor Peninsula Unit 2, RM 1/62



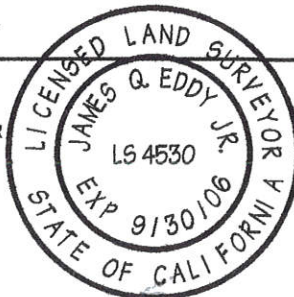
- Indicates found monument per RM 1/62.
- Indicates set 5/8" rebar & plug LS 4530.
- ⊕ Indicates monument per RM 1/62 not found or set.
- () Indicates record data per RM 1/62.

SURVEYOR'S CERTIFICATE

THIS CORNER RECORD WAS PREPARED BY ME OR UNDER MY DIRECTION IN CONFORMANCE WITH THE LAND SURVEYORS ACT ON September 2, 20 03.

SIGNED James Q. Eddy Jr.
L.S. or R.C.E. No. L.S. 4530

SEAL



COUNTY SURVEYOR'S CERTIFICATE

THE CORNER RECORD WAS RECEIVED AND EXAMINED AND FILED 115 17 NO. 30515 20 03

BY: R Tom
TITLE: Plumas County Surveyor

DOCUMENT No. 251
STATEMENT ON BACK OF SHEET YES NO

