

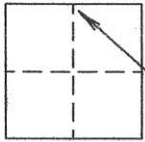
102.411-002

CORNER RECORD

252

COUNTY OF Plumas T. 28 N R. 7 E Mount Diablo MERIDIAN CALIFORNIA

CORNER TYPE: GOV'T CORNER MEANDER RANCHO CONTROL OTHER
CORNER IDENTIFICATION - DATE OF VISIT September 16, 20 03



Section 36
approximate location

CORNER - LEFT AS FOUND FOUND AND TAGGED REESTABLISHED OBLITERATED CORNER REBUILT

PHYSICAL DESCRIPTION OF CORNER FOUND: EVIDENCE AND METHOD USED TO IDENTIFY OR REESTABLISH

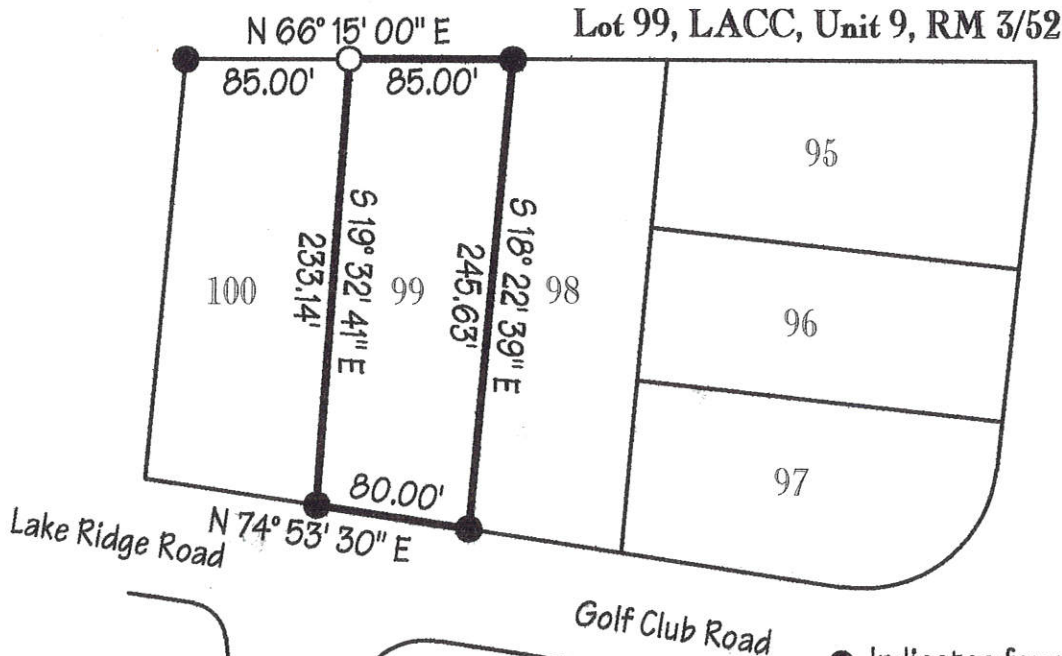
The Northwest corner of Lot 99, LACC Unit 9 was not found. The Northeast corner of Lot 99 and the Northwest corner of Lot 100 were used to reestablish the missing corner.

PHYSICAL DESCRIPTION OF MONUMENTS REBUILT OR PERPETUATED

Set 5/8" rebar and plastic plug stamped LS 4530

CALIFORNIA COORDINATE SYSTEM ORDER: FIRST SECOND THIRD
STATIONS USED: NGS (USC & GS) COUNTY OTHER STATION _____
ZONE _____ ELEVATION _____ NORTHINGS(Y) _____ EASTINGS (X) _____

SKETCH: (Include reference tie or witness points, remarks and topo of area)



Scale: 1" = 100'

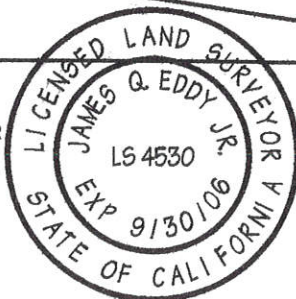
- Indicates found monument per RM 3/52.
- Indicates set 5/8" rebar & plug LS 4530.

SURVEYOR'S CERTIFICATE

THIS CORNER RECORD WAS PREPARED BY ME OR UNDER MY DIRECTION IN CONFORMANCE WITH THE LAND SURVEYORS ACT ON September 16, 20 03.

SIGNED James Q. Eddy Jr.
L.S. or R.C.E. No. L.S. 4530

SEAL



COUNTY SURVEYOR'S CERTIFICATE

THE CORNER RECORD WAS RECEIVED AND EXAMINED AND FILED September 17, 20 03

BY: R. Tom

TITLE: Plumas County Surveyor

DOCUMENT No. 252
STATEMENT ON BACK OF SHEET YES NO

CORNER RECORD

COUNTY OF PLUMAS
MOUNT Diablo
SECTION 36
APPROXIMATE LOCATION

SECTION 36
APPROXIMATE LOCATION



CORNER - LEFT AS FOUND FOUND AND TAGGED REESTABLISHED OR ALTERED CORNER RESULT

PHYSICAL DESCRIPTION OF CORNER FOUND: EVIDENCE AND METHOD USED TO IDENTIFY OR REESTABLISH

The Northwest corner of Lot 62, LACU Unit 9 was not found. The Northeast corner of Lot 62 and the Northwest corner of Lot 100 were used to reestablish the missing corner.

PHYSICAL DESCRIPTION OF CORNER FOUND: EVIDENCE AND METHOD USED TO IDENTIFY OR REESTABLISH

Set 1/8" rebar and plastic plug at record 18 4830

DATE: 11/11/03
TIME: 10:00 AM
BY: [Signature]

EXCEPT FOR THIS REFERENCE TO A CORNER, THIS RECORD IS NOT TO BE CONSIDERED A PART OF THE ORIGINAL RECORD.

Lot 62, LACU Unit 9, RM 242

Scale 1" = 100'



Indicates found monuments for RM 242
Indicates set 1/8" rebar plug 18 4830

COUNTY SURVEYOR'S CERTIFICATE
STATEMENT OF WORKS
DATE: 11/11/03
BY: [Signature]



SURVEYOR'S CERTIFICATE
THIS DOCUMENT WAS PREPARED BY ME OR UNDER MY DIRECTOR'S SUPERVISION AND I AM A LICENSED SURVEYOR IN THE STATE OF CALIFORNIA.
DATE: 11/11/03
BY: [Signature]