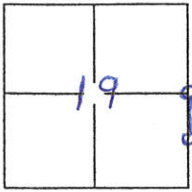


CORNER RECORD

Document Number 253
County of PLUMAS, California

City of _____
Brief Legal Description CRAWFORD ESTATES SUBDIVISION, EAST QUINCY, T24N R10E S19



CORNER TYPE

Government Corner Control
Meander Property
Rancho Other

Date of Survey Dec 16, 03

COORDINATES(Optional)

N. _____
E. _____
Zone _____ NAD27 NAD83
NAD83 Epoch _____
Elevation _____
Vert. Datum: NGVD29 NAV88
Meas. Units: Metric Imperial

Corner - Left as found Found and tagged Established Reestablished Rebuilt

Identification and type of corner found: Evidence used to identify or procedure used to establish or reestablish the corner:

SEE BACK SIDE

A description of the physical condition of the monument as found and as set or reset:

SEE BACK SIDE

SURVEYOR'S STATEMENT

This Corner Record was prepared by me or under my direction in conformance with the Land Surveyor's Act on JAN 7, 0, 2004.

Signed Richard Knoettgen (P.L.S.) or R.C.E. Number 47794
For the State of California
Department of Transportation

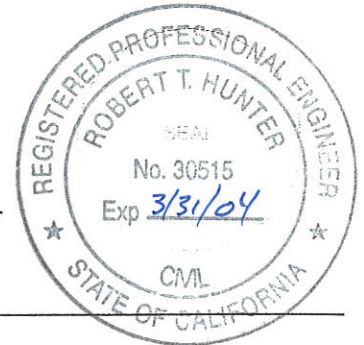


COUNTY SURVEYOR'S STATEMENT

This Corner Record was received January 7, 2004 and examined and filed January 13, 2004.

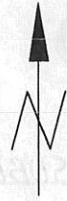
Signed R Tom Stantes P.L.S. or R.C.E. Number 30515
Title County Surveyor

County Surveyor's Comment _____



LEGEND

- = FOUND MONUMENT
- R1 = 4 M 30
- R2 = 7 RS 50
- R3 = 8 RS 133
- = WESTERLY LINE OF APN 116-280-009 & APN 116-280-010
- × × = FENCE LINE



1 INCH = 200 FEET
 0 200

FENCE ENCROACHMENT

OFFSET FROM FENCE TO PROPERTY LINE SHOWN IN FT. IS CORRECT.

OFFSET FROM FENCE TO PROPERTY LINE IS EXAGGERATED VISUALLY IN DRAWING TO SHOW DETAIL.

CORNER NOTES

CORNER 1 IS A STANDARD USFS MONUMENT STAMPED AS 1/4 CORNER BY LS 4976 (7 RS 50) SET "T" STEEL FENCE POST S45°E 0.5 FEET FROM MONUMENT

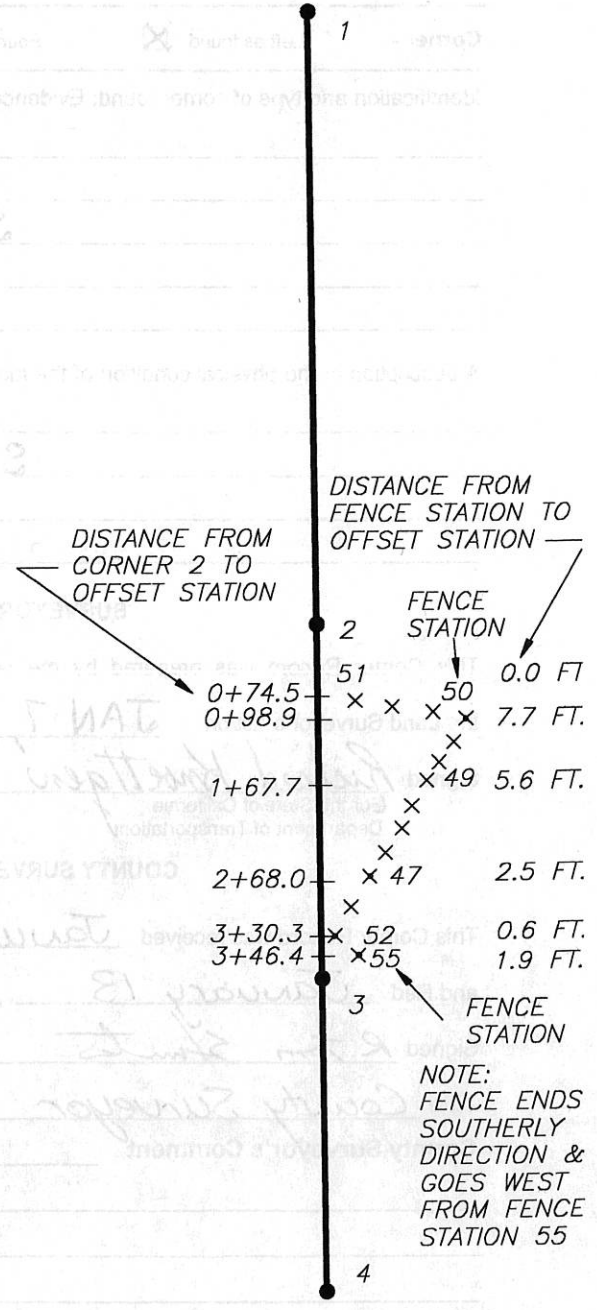
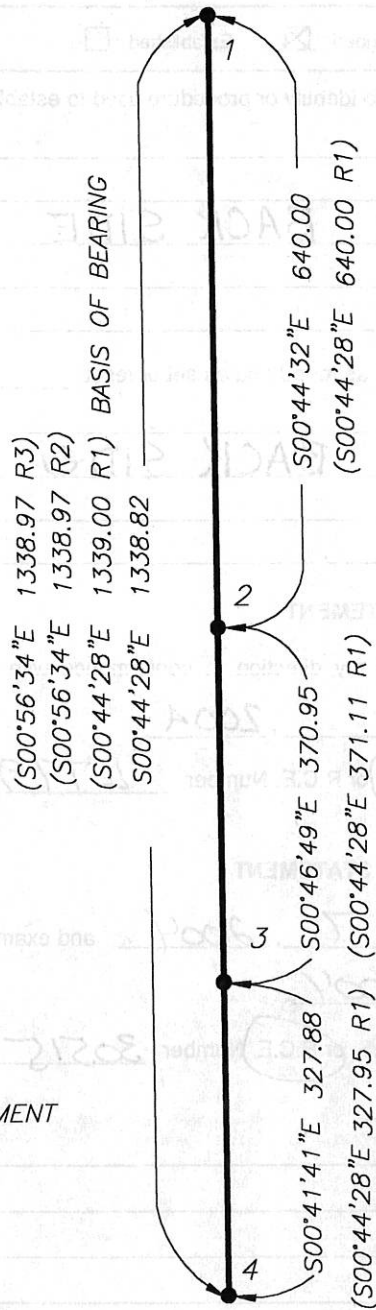
CORNER 2 IS A 13/16" O.D. STEEL PIPE WITH TAG LS 3297 (4 M 30) SET "T" STEEL FENCE POST S45°E 0.5 FEET FROM MONUMENT

CORNER 3 IS A 7/8" OD STEEL PIPE, NO TAG (4 M 30). WIRED 1 1/2" DIA. STEEL WASHER STAMPED "RICHARD KNOETTGEN LS 7794". SET "T" STEEL FENCE POST S45°E 0.5 FEET FROM MONUMENT

CORNER 4 IS A STANDARD USFS MONUMENT STAMPED AS SOUTH 1/16 CORNER BY LS 4976 (7 RS 50) SET "T" STEEL FENCE POST N45°E 0.5 FEET FROM MONUMENT.

1/4 CORNER

1/4 CORNER



SOUTH 1/16 CORNER

SOUTH 1/16 CORNER