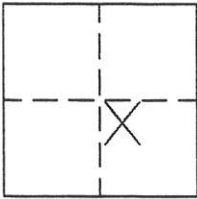


CORNER RECORD

Document Number 254

IN THE SE 1/4 OF SECTION 3, T. 26 N., R. 9 E., M.D.M. County of PLUMAS, California

Brief Legal Description 230 KINDER AVE, GREENVILLE, CA. 95947.



CORNER TYPE

Government Corner Control
Meander Property
Rancho Other
Date of Survey July 2003

COORDINATES (Optional)

N. _____
E. _____
Zone _____ Datum _____
Elev. _____

Corner— Left as found Found and tagged Established Reestablished Rebuilt

Identification and type of corner found: Evidence used to identify or procedure used to establish or reestablish the corner:
Found points as shown and described on attached sketch and as shown on 9 PM 142 and 10 PM 19.

A description of the physical condition of the monument as found and as set or reset:
Found points as described and in good condition. Points set as shown on attached sketch.

SURVEYOR'S STATEMENT

This Corner Record was prepared by me or under my direction in conformance with the Land Surveyors' Act on July 11, 2003.

Signed John W. Hamby L.S. 2843
John W. Hamby



COUNTY SURVEYOR'S STATEMENT

This Corner Record was received January 7 2003 and
examined and filed January 16 2003
2004

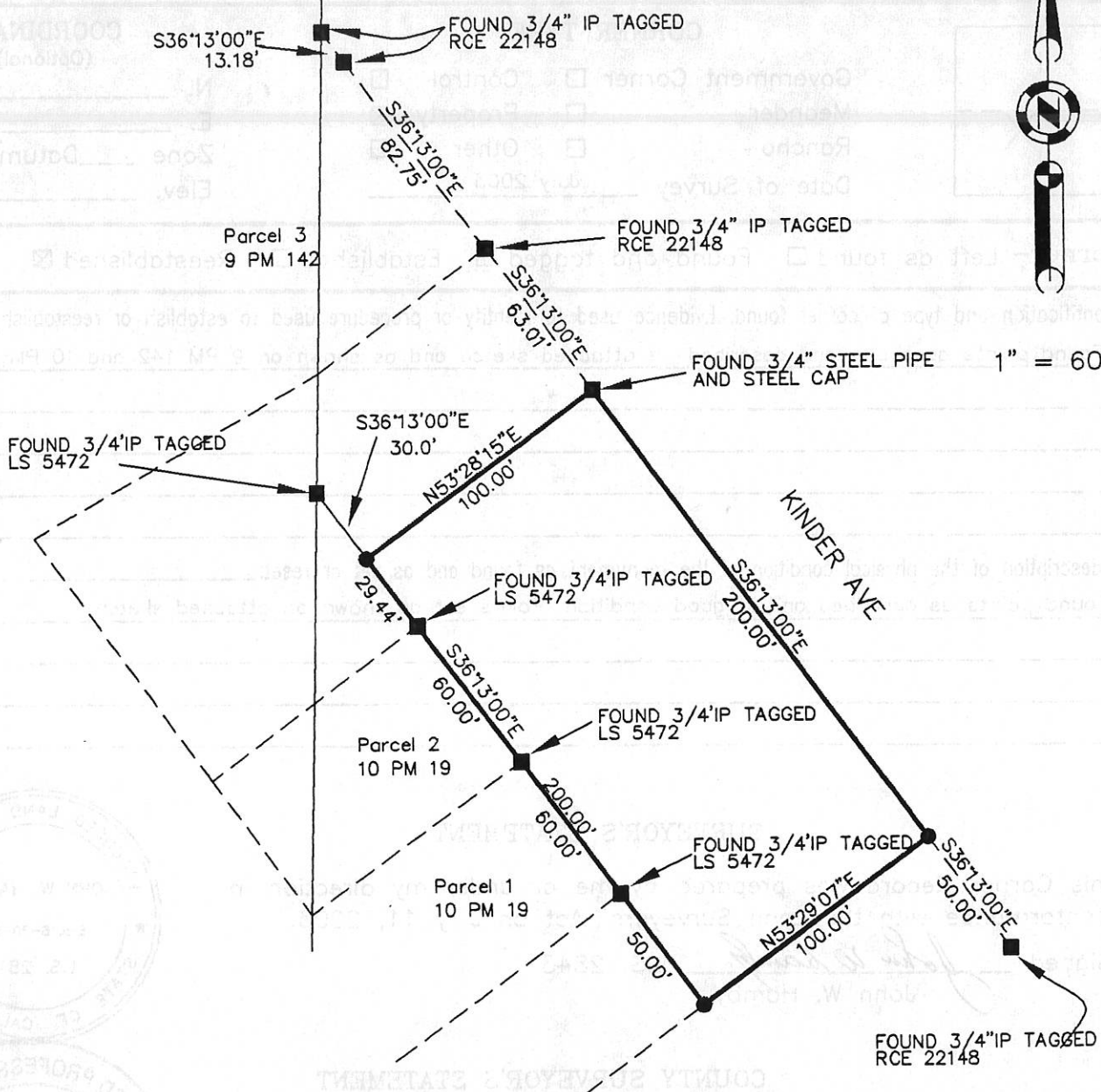
Signed R. Tom Hunter Title Plumas Co. Engineer



County Surveyor's Comment _____



1" = 60'



LEGEND

- FOUND point as described per 9 PM 142 & 10 PM 19.
- SET 5/8" Rebar & Aluminum Cap LS 2843
- Nothing found or set

Hamby Surveying Inc.
P.O. Box 1209
Portola, CA 96122
(530) 832-5571