

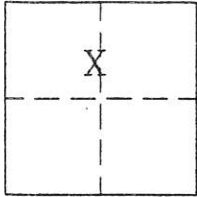
CORNER RECORD

Document Number 256

Sec. 36 T.23N.R.13E. MDM

County of Plumas, California

Brief Legal Description Portion Block 71, 2nd. North Addition to Portola



CORNER TYPE

Government Corner Control
Meander Property
Rancho Other
Date of Survey Sept. 30, 2003

COORDINATES
(Optional)

N. _____
E. _____
Zone _____ Datum _____
Elev. _____

Corner- Left as found Found and tagged Established Reestablished Rebuilt

Identification and type of corner found: Evidence used to identify or procedure used to establish or reestablish the corner:
Found points indicated in good condition as shown on attached sketch.

A description of the physical condition of the monument as found and as set or reset:
Set 5/8" rebar with aluminum cap stamped LS 2843 as shown on attached sketch.

SURVEYOR'S STATEMENT

This Corner Record was prepared by me or under my direction in conformance with the Land Surveyors' Act on Oct. 6, 2003.

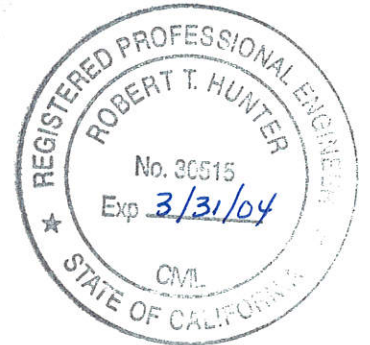
Signed John W Hamby L.S. 2843
John W. Hamby



COUNTY SURVEYOR'S STATEMENT

This Corner Record was received 1/15/04 2004 and examined and filed 1/27/04 2004.

Signed R Tom Hunter Title Engineer

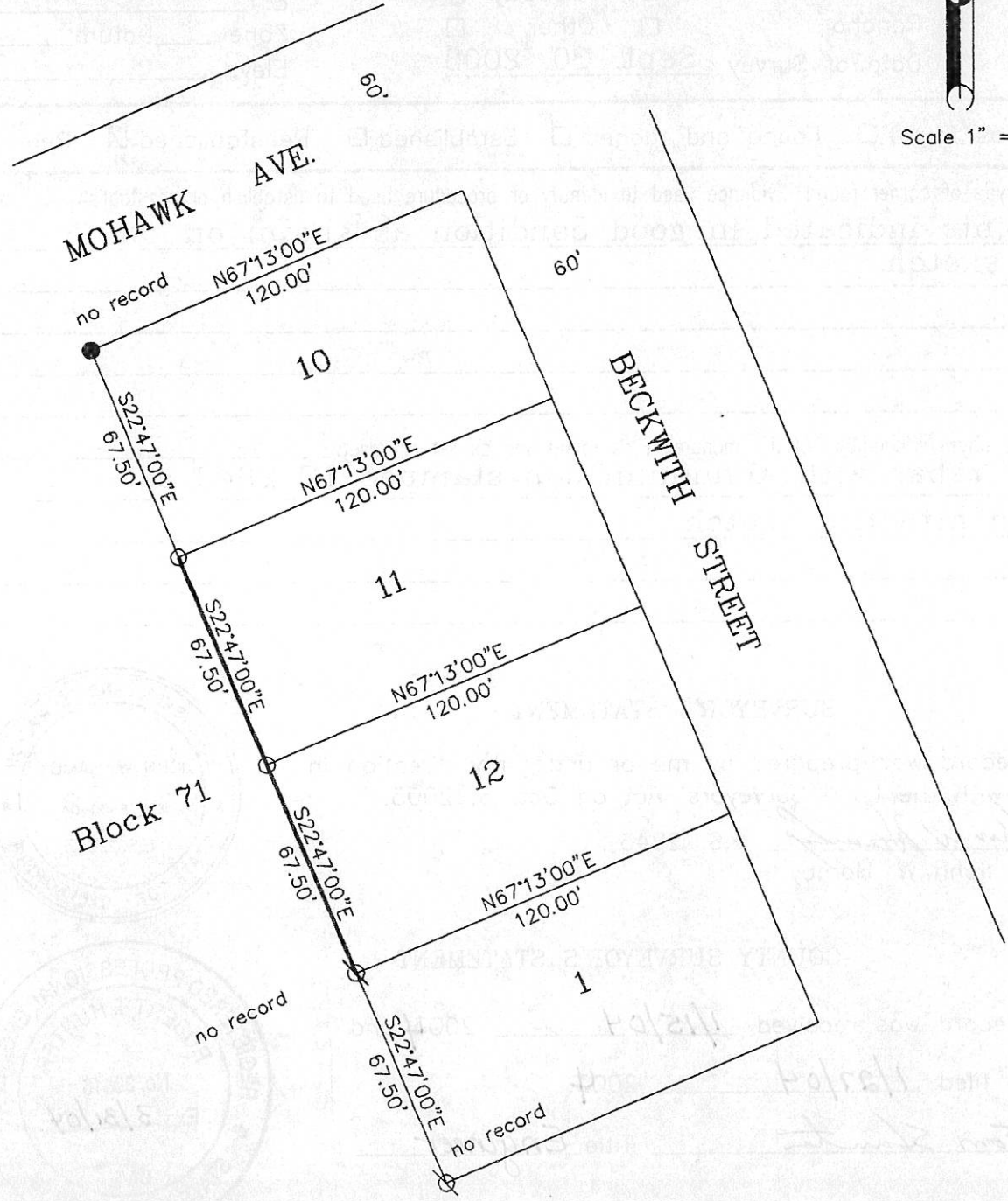


County Surveyor's Comment _____

- FOUND Rebar with Aluminum Cap LS 2843
 - SET 5/8" Rebar & Aluminum Cap LS 2843
 - ⊗ FOUND 3/4" I.P.
- (R1) RECORD per 2 M 43
- All distances are (R1) & Measured.



Scale 1" = 50'



Block 71

Portion of Block 71
 Amended Re-Subdivision
 Second North Addition
 to Portola Townsite

Hamby Surveying Inc
 P.O. Box 1209
 Portola, CA 96122
 (530) 832-5571