

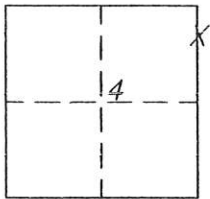
CORNER RECORD

Document Number 257

Portion Section 4, T.23N.R.10E. MDM

County of Plumas, California

Brief Legal Description Portion Section 4, T.23N.R.10E



CORNER TYPE

Government Corner Control
Meander Property
Rancho Other
Date of Survey October, 2003

COORDINATES (Optional)

N. _____
E. _____
Zone _____ Datum _____
Elev. _____

Corner- Left as found Found and tagged Established Reestablished Rebuilt

Identification and type of corner found: Evidence used to identify or procedure used to establish or reestablish the corner:
Found USFS monuments as shown on the attached Sketch and on 10 RS 73, and
set the monument in the position shown per 10 RS 73.

A description of the physical condition of the monument as found and as set or reset:
Found the USFS monuments in good condition and as shown on 10 RS 73.

SURVEYOR'S STATEMENT

This Corner Record was prepared by me or under my direction in conformance with the Land Surveyors' Act on October 7, 2003.

Signed John W. Hamby L.S. 2843
John W. Hamby



COUNTY SURVEYOR'S STATEMENT

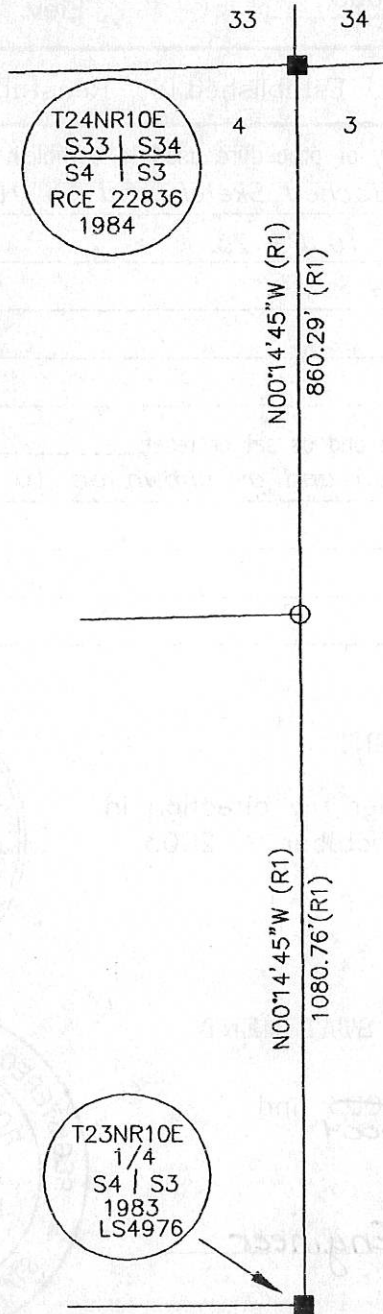
This Corner Record was received 1/15/04 2003 and
2004

examined and filed 1/27/04 2003
2004
Signed R. Tom Hunter Title Engineer



County Surveyor's Comment _____

- FOUND USFS Aluminum Cap per 10 RS 73
- SET 5/8" Rebar & Aluminum Cap LS 2843
- (R1) RECORD per 10 RS 73



Scale 1" = 300'

Portion Section 4
 T.23N.R.10E MDM
 Plumas County, Ca.
 Scale 1" = 300'
 November 2003

T23NR10E
 1/4
 S4 | S3
 1983
 LS4976

Hamby Surveying Inc.
 P.O. Box 1209
 Portola, CA 96122
 (530) 832-5571

03063-A