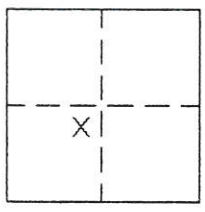


CORNER RECORD

Document Number 260

IN THE SW1/4 SEC 36, T23N., R16E., M.D.M. County of PLUMAS, California

Brief Legal Description LOT 2 FRENCHMAN SUBDIVISION 3 M 22



CORNER TYPE

Government Corner Control
Meander Property
Rancho Other
Date of Survey DECEMBER, 2003

COORDINATES

(Optional)
N. _____
E. _____
Zone _____ Datum _____
Elev. _____

Corner— Left as found Found and tagged Established Reestablished Rebuilt

Identification and type of corner found: Evidence used to identify or procedure used to establish or reestablish the corner:
FOUND POINTS AS SHOWN AND DESCRIBED ON ATTACHED SKETCH AND AS SHOWN ON
3 M 22.

A description of the physical condition of the monument as found and as set or reset:
FOUND POINTS AS DESCRIBED AND IN GOOD CONDITION. POINTS SET AS SHOWN ON
ATTACHED SKETCH.

SURVEYOR'S STATEMENT

This Corner Record was prepared by me or under my direction in conformance with the Land Surveyors' Act on December 10, 2003.

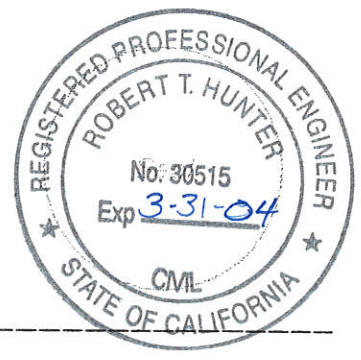
Signed John W. Hamby L.S. 2843
John W. Hamby



COUNTY SURVEYOR'S STATEMENT

This Corner Record was received 1-15- 2004 and examined and filed 2/6/04 2004.

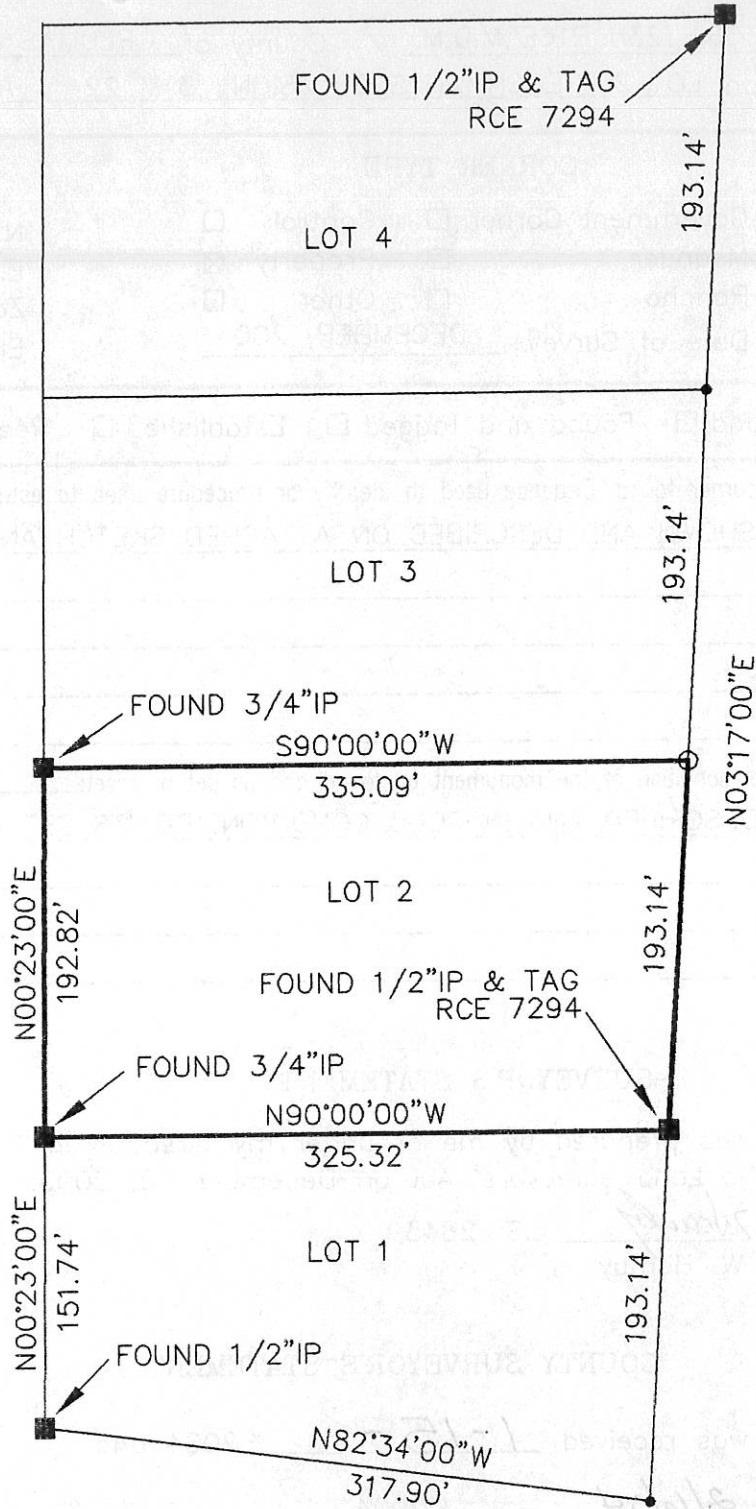
Signed R. Tom Smith Title Engineer



County Surveyor's Comment _____



1" = 100'



LEGEND

- FOUND point as described
 - SET 5/8" Rebar & Aluminum Cap LS 2843
 - NOTHING Found or Set
- All data is record and measured unless indicated

Hamby Surveying Inc.
P.O. Box 1209
Portola, CA 96122
(530) 832-5571